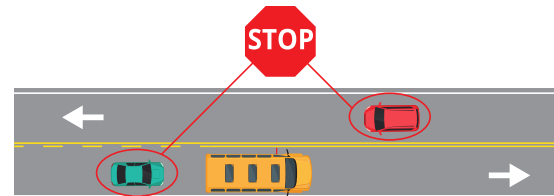


# STOP ON RED KIDS AHEAD

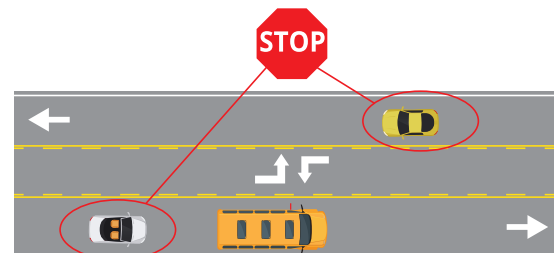
Kansas law KSA 8-1556 requires **all motorists to stop when approaching a stopped school bus from either direction when it's displaying its flashing red lights and stop arm.** Motorists are to remain stopped until the bus is no longer displaying its flashing red lights and stop arm.

**Violation of this law not only endangers children, but is punishable by a fine and court costs in excess of \$420.**



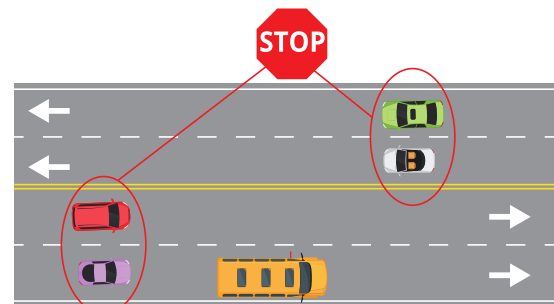
#### Two-lane Roadway

When a school bus stops and activates its stop arm and flashing red lights, all traffic must stop from both directions.



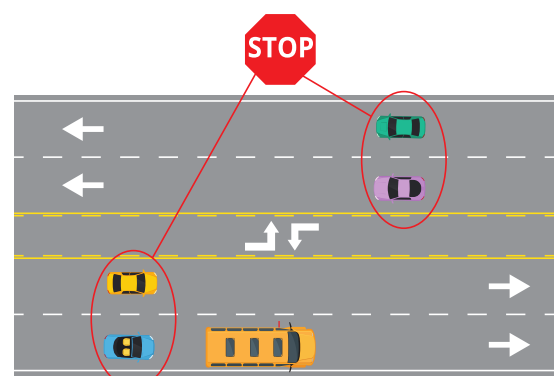
#### Two-lane Roadway with Shared Left Turn Lane

When a school bus stops and activates its stop arm and flashing red lights, all traffic must stop from both directions.



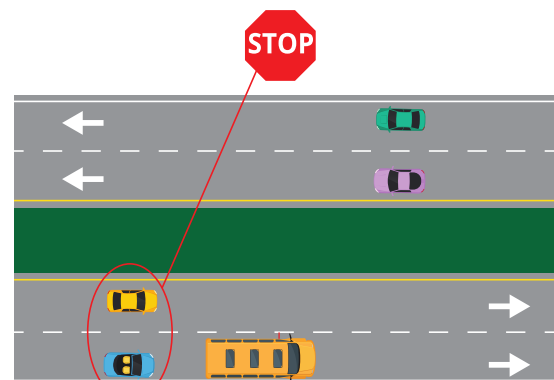
#### Four-lane Roadway with Double Yellow Line

When a school bus stops and activates its stop arm and flashing red lights, all traffic must stop from both directions.



#### Four-lane Roadway with Shared Left Turn Lane

When a school bus stops and activates its stop arm and flashing red lights, all traffic must stop from both directions.



#### Divided Highway with Median Separation

When a school bus stops and activates its stop arm and flashing red lights, traffic approaching the bus from behind must stop.



School Bus Safety Unit  
 Kansas State Department of Education  
 900 S.W. Jackson Street, Suite 102  
 Topeka, Kansas 66612-1212  
 (785) 296-3551  
[www.ksde.org](http://www.ksde.org)