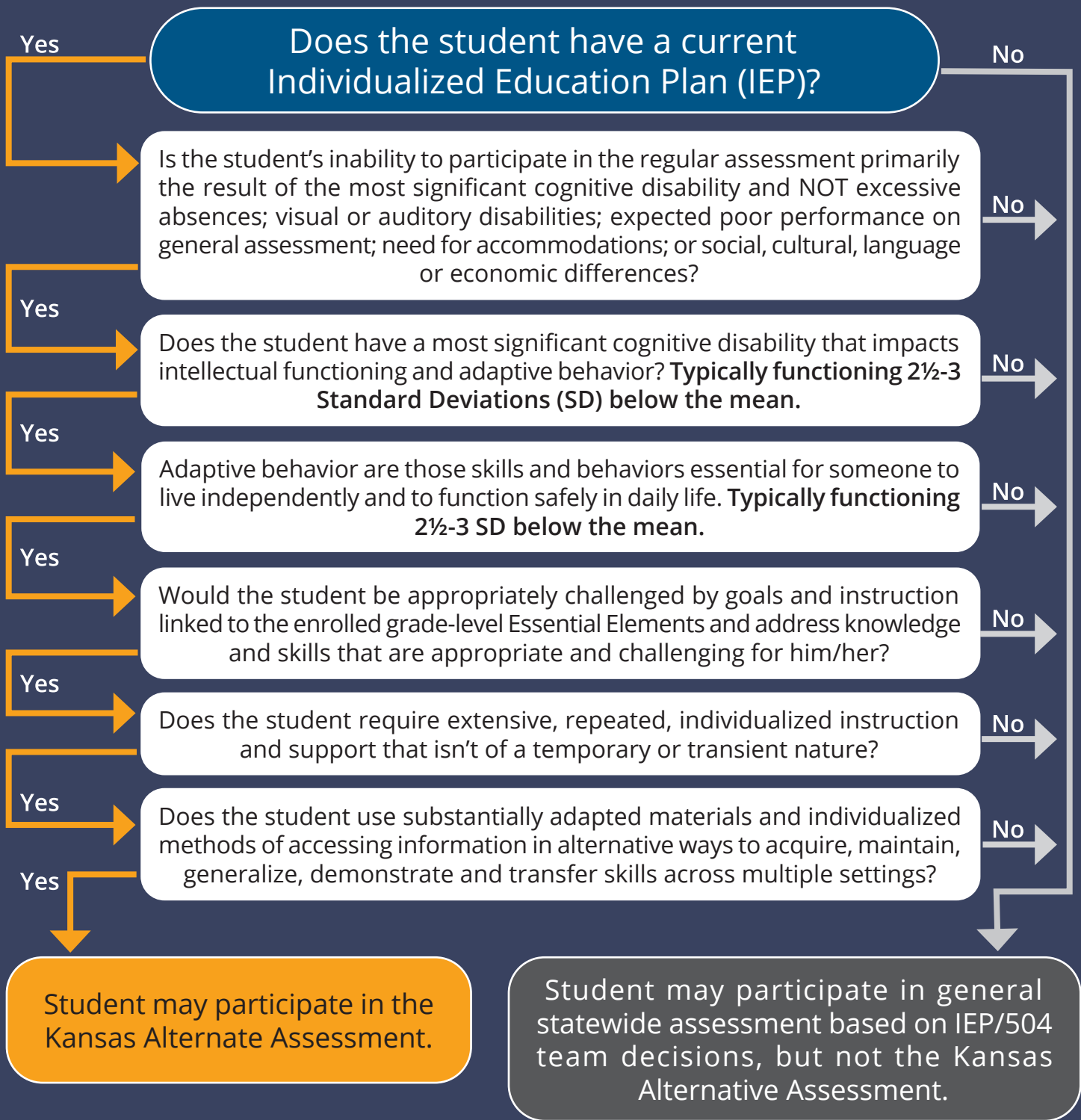
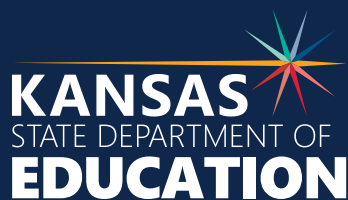


KANSAS ALTERNATIVE ASSESSMENT FLOW CHART



For more information, contact:

Cary Rogers
 Education Program Consultant
 Special Education and Title Services
 (785) 296-0916
crogers@ksde.org



Kansas State Department of Education
 900 S.W. Jackson Street, Suite 102
 Topeka, Kansas 66612-1212
www.ksde.org

Kansas leads the world in the success of each student.

The Kansas State Department of Education does not discriminate on the basis of race, color, national origin, sex, disability or age in its programs and activities and provides equal access to the Boy Scouts and other designated youth groups. The following person has been designated to handle inquiries regarding the nondiscrimination policies: KSDE General Counsel, Office of General Counsel, KSDE, Landon State Office Building, 900 S.W. Jackson, Suite 102, Topeka, KS 66612, (785) 296-3201