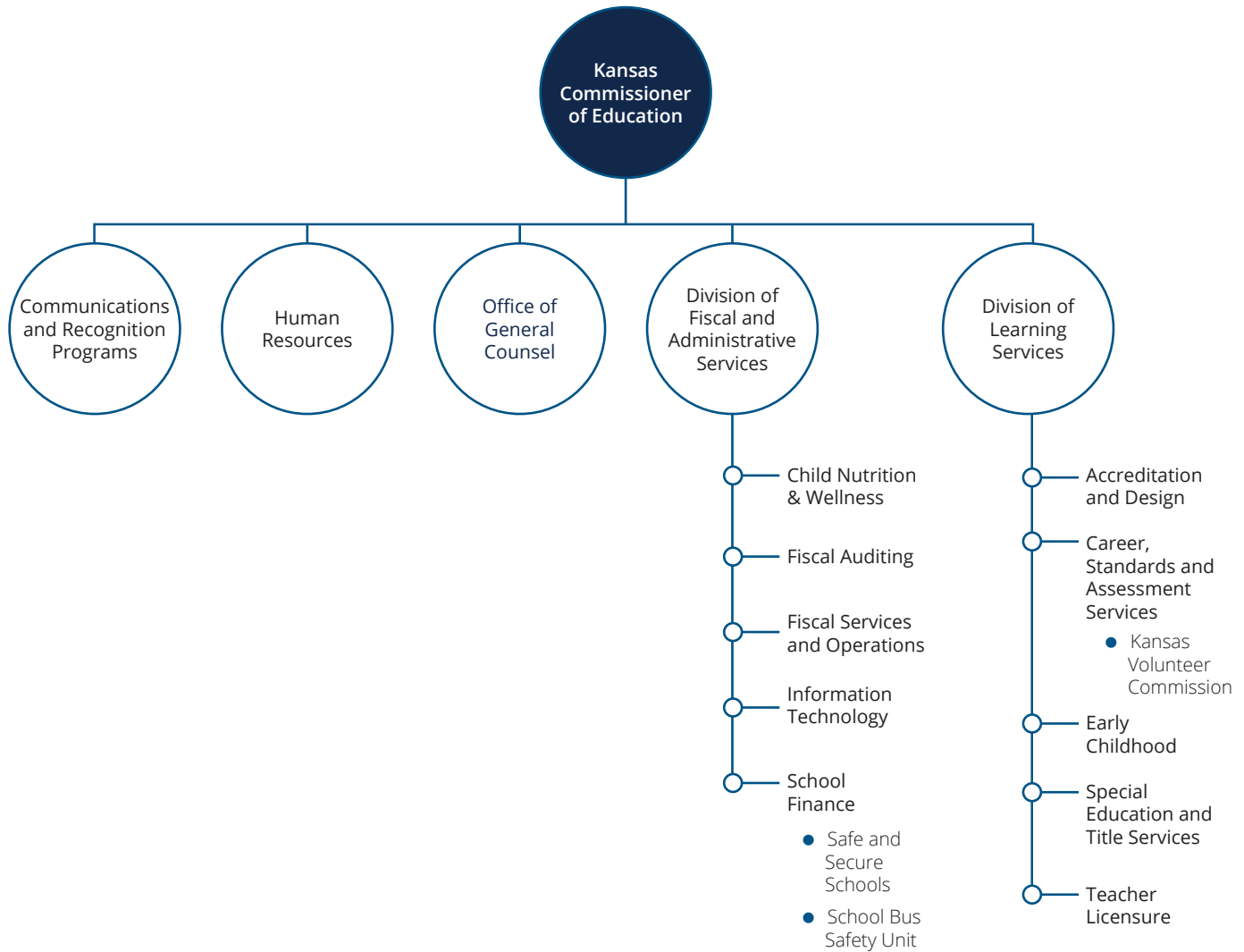


Kansas State Department of Education Agency Directory

Agency Organization Chart



Abbreviations

AD	Accreditation and Design
CNW	Child Nutrition and Wellness
CRP	Communications and Recognition Programs
CSAS	Career, Standards and Assessment Services
CTE	Career and Technical Education
DLS	Division of Learning Services
EC	Early Childhood
ELA	English Language Arts
ELL	English Language Learners
ESL	English as a Second Language
FA	Fiscal Auditing
FACS	Family and Consumer Sciences
FAS	Division of Fiscal and Administrative Services
FCCLA	Family, Career and Community Leaders of America
FCS	Family and Consumer Sciences
FFA	Future Farmers of America
FSO	Fiscal Services and Operations
GC	Office of General Counsel
HR	Human Resources
IPS	Individual Plan of Study
IT	Information Technology
KEEP	Kansas Educator Evaluation Protocol
KCCMS	Kansas Course Codes Management System
KESA	Kansas Education Systems Accreditation
KIDS	Kansas Individual Data on Students
KSBE	Kansas State Board of Education
KSDE	Kansas State Department of Education
LiNK	Literacy Network of Kansas - Striving Readers Program
NAEP	National Assessment of Education Progress
OC	Office of the Commissioner
RE	Research and Evaluation
SBSU	School Bus Safety Unit
SECD	Social-Emotional and Character Development
SETS	Special Education and Title Services
SF	School Finance
SSSU	Safe and Secure Schools Unit
STEM	Science, Technology, Engineering and Mathematics
TL	Teacher Licensure

Office of the Commissioner

Dr. Randy Watson	Kansas Commissioner of Education	(785) 296-3202
Makayla Auldridge	Administrative Officer	(785) 296-3202

BOARD OF EDUCATION

Barbara Hughes	Executive Secretary	(785) 296-3203
----------------	---------------------	----------------

COMMUNICATIONS AND RECOGNITION PROGRAMS

Denise L. Kahler	Director	(785) 296-4876
Tamla Miller	Public Service Administrator	(785) 296-4950
Ann Marie Bush	Communications Specialist	(785) 296-7921
Cheryl Franklin	Graphic Designer Specialist	(785) 296-4909

HUMAN RESOURCES

Wendy M. Fritz	Director	(785) 296-5363
Marissa Seele	Administrative Specialist	(785) 296-7795
Sarah Miles	Human Resources Professional II	(785) 296-3906

OFFICE OF GENERAL COUNSEL

R. Scott Gordon	General Counsel	(785) 296-3204
Cheryl Austin	Legal Secretary	(785) 296-3204
Ronald Gish	Special Investigator	(785) 296-3204

Division of Fiscal and Administrative Services

Dr. S. Craig Neuenswander	Deputy Commissioner	(785) 296-3871
Sherry Root	Senior Administrative Specialist	(785) 296-3871

CHILD NUTRITION & WELLNESS

Cheryl Johnson, MS, RD, LD	Director	(785) 296-2276
Katy Hatch	Senior Administrative Assistant	(785) 296-2276
Karen Campbell	Assistant Director	(785) 296-2276
Arleen Anderson, RD, LD	Child Nutrition Consultant	(785) 296-2276
Emily Bonilla	Child Nutrition Consultant	(785) 296-2276
Kelley Chanay, MEd, RDN, LD	Professional Development Project Director	(785) 296-2276
Eryn Davis, RDN, LD	Farm to Plate Coordinator	(785) 296-2276
Barb Depew, RD, LD	Farm to Plate Project Director	(785) 296-2276
Robert Dillman, MS, RD, LD	Child Nutrition Consultant	(785) 296-2276
Angela Dittmer	Child Nutrition Consultant	(785) 296-2276
Diane Dysart	Program Consultant II	(785) 296-2276
Diana Floyd, RD, LD	Child Nutrition Consultant	(785) 296-2276
Jeanie Galemore	Senior Child Nutrition Consultant	(785) 296-2276
Dessa Gifford	Child Nutrition Consultant	(785) 296-2276
Hilary Hanvey	Child Nutrition Consultant	(785) 296-2276
Laura Hodgson	Child Nutrition Consultant, Procurement Specialist	(785) 296-2276
Dayna Kriley, MS, RD, LD	Child Nutrition Consultant	(785) 296-2276
Alicia Newland	Child Nutrition Consultant	(785) 296-2276
Lynette Osner, RD, LD	Child Nutrition Consultant	(785) 296-2276
Jessica Reece, RD, LD	Child Nutrition Consultant	(785) 296-2276
Pam Rosebaugh	Public Service Administrator	(785) 296-2276
Rachel Schiferl, RD, LD	Child Nutrition Consultant	(785) 296-2276
Karen Seymour, RD, LD	Child Nutrition Consultant	(785) 296-2276
Holly Steinlage, MPH, RD, LD	Child Nutrition Consultant	(785) 296-2276
Kevin Thomas	Program Consultant	(785) 296-2276
Hannah Tillery	Child Nutrition Consultant	(785) 296-2276

FISCAL AUDITING

Laurel S. Murdie	Director	(785) 296-4976
Peggy Hill	Administrative Specialist	(785) 296-4976
Nancy Allen	Auditor III	(785) 296-4976
Kim Burd	Audit Manager	(785) 296-4976
Ali Cecchini	Auditor I	(785) 296-4976
Josh Fairman	Auditor I	(785) 296-4976
Jessica Gomez	Auditor I	(785) 296-4976
Jenna Haag	Auditor I	(785) 296-4976
Joe Haverkamp	Auditor I	(785) 296-4976
Matt Hrabe	Auditor I	(785) 296-4976
Rick Moen	Auditor II	(785) 296-4976
Jamie Ribordy	Auditor III	(785) 296-4976
Janis Taylor	Auditor IV	(785) 296-4976
Jerry Wilson	Auditor III	(785) 296-4976

FISCAL SERVICES AND OPERATIONS

John Hess	Director	(785) 296-4962
Angie Funk	Assistant Director	(785) 296-3264
Denise Dallman	Accountant III	(785) 296-5060
Jamie Merklein	Accountant III	(785) 296-3674
Angela Rosier	Accountant IV	(785) 296-0784
Sierra Stanley	Accountant	(785) 296-0976
Jan Williams	Public Service Administrator	(785) 296-3263

INFORMATION TECHNOLOGY

Kathi Grossenbacher	Director	(785) 296-3399
Jenni Marlatt	Administrative Specialist	(785) 296-7931
Kyle Lord	Assistant Director	(785) 296-6155
Todd Lowe	Assistant Director	(785) 296-7115
Anna Stallbaumer	Administrative Specialist	(785) 296-6829
Christine Armstrong	Systems Software Staff Consultant	(785) 296-5711
Trey Austin	Applications Developer	(785) 296-1203
Josh Bailey	Database Administrator	(785) 296-0758
Tammy R. Blaess	Application Developer II	(785) 296-2316
Sharon Bloom	Information Systems Manager	(785) 296-3915
Julie V. Cook	Project Manager	(785) 296-3300
Tristen Cook	Technology Support Technician	(785) 296-4036
Jennifer E. Cook-Miller	Project Manager	(785) 296-7943
Denise Davis	Requirements Analyst	(785) 368-7192
Eric Dehner	Technical Support Consultant II	(785) 296-4961
Chris Edwards	Systems Software Staff Consultant	(785) 296-1222
Timothy Enneking	Enterprise Security Specialist	(785) 296-0950
Angie Feyh	Quality Assurance Technician	(785) 291-3574
Kevin Fross	Enterprise Architect	(785) 291-3622
John Girodat	Project Manager	(785) 296-8676
Jennifer Hayes	Requirements Analyst	(785) 296-6331
Andrew Higgins	Enterprise Support Specialist	(785) 296-6766
Greg Hiszczyński	Database Administrator	(785) 296-4928
Brian Hosey	Enterprise Support Specialist	(785) 296-3709
Jason Howe	Webmaster	(785) 296-3544
Mike Jordan	Project Manager	(785) 296-1970
Daniel Kalas	Applications Developer	(785) 296-7778
Shuming Li	Application Developer II	(785) 296-7976
Stuart Lillie	Systems Software Staff Consultant	(785) 368-7127
Reylli Lopez	Technology Support Technician	(785) 296-8392
Bob Mather	Application Developer II	(785) 296-2317
Richard Matteson	Project Manager	(785) 291-3534
Karen McClintock	Technology Support Technician II	(785) 291-0599
Christopher Ortega	Senior Trainer	(785) 291-3512
Sarah Palubinski	Project Manager - KIDS	(785) 296-3575
Dina Patel	Application Developer II	(785) 296-6143
Matt Preston	Application Developer II	(785) 291-3679
Michael Reb	Application Development Supervisor	(785) 296-5125
Donna Reinert	Application Developer III	(785) 296-1208

Freddy Richter	Quality Assurance Technician	(785) 296-8438
Phillip Salyer	System Software Staff Consultant	(785) 368-8040
Melanie Scott	Trainer	(785) 291-3514
Jennifer S. Shaffer	Information Systems Manager	(785) 296-5240
Tom Tosh	Data Coordinator	(785) 296-5039
Philip Watkins	Technology Support Technician II	(785) 296-5229
Nathan Weedon	IT Security Analyst	(785) 296-5084
Kelley Wiley	Project Manager	(785) 296-5069
Benjamin Wolf	Applications Developer	(785) 296-4958
Charlotte Zeller	Project Manager/Data Compliance Officer	(785) 291-3312
Raymond L. Zwiener	Information Systems Manager	(785) 296-2226

SCHOOL FINANCE

Dale Brungardt	Director	(785) 296-3872
Katie Albright	Administrative Specialist	(785) 296-3872
Sara McCullah	Assistant Director	(785) 296-4972
Jennifer L. Barger	Public Service Administrator II	(785) 296-4965
Annette Blevins	Senior Administrative Assistant - School Bus Safety Unit	(785) 296-3551
Angie Brungardt	Public Service Administrator - Safe and Secure Schools Unit	(785) 296-7056
John Calvert	Head School Safety Specialist - Safe and Secure Schools Unit	(785) 296-7056
Keith Dreiling	Public Service Administrator - School Bus Safety Specialist, School Bus Safety Unit	(785) 296-4567
Jim Green	School Safety Specialist - Safe and Secure Schools Unit	(785) 296-4946
Rose Ireland	Public Service Administrator II	(785) 296-4973
Nicole K. Norwood	Public Service Administrator II	(785) 296-2020
Melissa Ostermeyer	Public Service Administrator, Training Coordinator, School Bus Safety Unit	(785) 296-5659
Dennis Tate	Public Service Administrator - School Bus Safety, School Bus Safety Unit	(785) 296-4545
Christie Wyckoff	Public Service Administrator	(785) 296-6321

Division of Learning Services

Dr. Ben Proctor	Deputy Commissioner	(785) 296-2303
Pat Bone	Senior Administrative Specialist	(785) 296-2303

ACCREDITATION AND DESIGN

Jay Scott	Director	(785) 296-6818
Andrea Pagán	Administrative Specialist	(785) 296-8012
Catherine Chmidling, PhD	Assistant Director - Educator Preparation	(785) 291-3573
Myron Melton	Assistant Director	(785) 296-8110
Sarah D. Perryman	Coordinator	(785) 296-1074
Jake Steel	Resident- Special Projects	(785) 368-7356

CAREER, STANDARDS AND ASSESSMENT SERVICES

Beth Fultz	Interim Director	(785) 296-3142
Tierney Kirtdoll	Administrative Specialist	(785) 296-3142
Jessica Dorsey	Assistant/Director - Executive Director, Kansas Volunteer Commission	(785) 296-3163
Elaine Rodriguez	Administrative Specialist, Kansas Volunteer Commission	(785) 368-7436
Dr. David Fernkopf	Assistant Director - Curricular Standards, Virtual Schools	(785) 296-8447
Casey Barezinsky	Senior Administrative Assistant	(785) 296-2078
Juanita Anderson	Senior Administrative Assistant	(785) 296-1978
Barbara A. Bahm	Senior Administrative Assistant	(785) 291-3538
Melissa Brunner	Teacher Leader Consultant - Early Literacy/Dyslexia	(785) 296-3142
Kelli Byrne	Grant Fiscal Officer	(785) 296-3637
Natalie Clark	Coordinator - Individual Plans of Study	(785) 296-3142
Dr. Laurie J. Curtis	Early Literacy/Dyslexia Program Manager	(785) 296-2749
Cherryl Delacruz	Teacher Leader Consultant - Mathematics	(785) 296-3142
Dr. Tina Ellsworth	Teacher Leader Consultant - HGSS	(785) 296-3142
Kay Emerson	AmeriCorps Kansas Coordinator, Kansas Volunteer Commission	(785) 368-6232
Sarah Evans	Teacher Leader Consultant - Science/ELL	(785) 296-3142
Andy Ewing	Education Program Consultant	(785) 296-3860
Julie C. Ewing	Coordinator - Assessment	(785) 296-4349
Michael Flenthrope	Teacher Leader Consultant - World Languages/ELL	(785) 296-3142
Todd Flory	Teacher Leader Consultant - Science/Mathematics/ELL	(785) 296-3142
LuAnn Fox	Teacher Leader Consultant - ELA	(785) 296-3142
Kimberly Gilman	Teacher Leader Consultant - HGSS	(785) 296-3142
Jolene Goodheart Peterson	Teacher Leader Consultant - Mathematics	(785) 296-3142
Robert Hamilton	Teacher Learning Consultant - Science	(785) 296-3142
Hailey Hawkinson	Teacher Leader Consultant - Early Literacy/Dyslexia	(785) 296-3142
Jessica Hess	Senior Education Research Analyst	(785) 296-3259
Joyce Huser	Education Program Consultant - Fine Arts	(785) 296-4932
Lee Jones	Public Service Executive I, ACT	(785) 296-7922
Dr. Robyn Kelso	Education Program Consultant - Graduation/DGSR	(785) 296-3444
Dr. Stephen King	Program Manager - STEM	(785) 296-1893
Pam Lamb	Public Service Executive I, State FCCLA Advisor	(785) 296-2164
Mary Liebl Johnson	Teacher Leader Consultant - ELA	(785) 296-3142
Mary Lonker	Teacher Leader Consultant - ELA	(785) 296-3142
Nathan McAlister	Program Manager - Humanities	(785) 296-3892
Joann McRell	Program Manager - Humanities	(785) 296-2144

Kathleen T. Mercer	Coordinator - Carl D. Perkins Funding	(785) 296-2307
Amanda Noll	Financial Officer, Kansas Volunteer Commission	(785) 368-6207
Rose Olmstead	Teacher Leader Consultant	(785) 296-3142
Meg Pearson	Service Enterprise Trainer, Kansas Volunteer Commission	(785) 368-7436
Regina L. Peszat, PhD	Teacher Leader Consultant - World Languages	(785) 296-3142
Jeri Powers	Teacher Leader Consultant - Early Literacy/Dyslexia	(785) 296-3142
Kent Reed	Education Program Consultant - Counseling, SECD, Academic/Behavioral and Technical Integration, Juvenile Justice (SB 367)	(785) 296-8109
Meg Richard	Program Manager - STEM	(785) 296-8108
Crystal Roberts	Education Program Consultant - Architecture and Construction Career Cluster, Engineering Career Cluster, Manufacturing Career Cluster, Law, Public Safety and Security Career Cluster, Transportation, Distribution and Logistics Career Cluster	(785) 296-2221
Xuewen Sheng, Ph.D.	Senior Education Research Analyst, Research and Evaluation	(785) 368-7435
Guy Shoulders	Education Program Consultant - Agriculture, Food and Natural Resources Career Cluster, FFA State Advisor	(785) 296-3956
Kelly Spurgeon, PhD	Senior Education Research Analyst	(785) 296-4924
Lara Staker	Teacher Leader Consultant	
Hayley Steinlage	Senior Education Research Analyst	(785) 296-6177
Mark Stephenson	Coordinator - National Assessment of Educational Progress (NAEP), International Assessments	(785) 296-7933
Helen Swanson	Education Program Consultant - Education & Training Career Cluster, Hospitality & Tourism Career Cluster, Human Services Career Cluster	(785) 296-4912
Kerrie Wahlmeier Olson	Teacher Leader Consultant - ELA	(785) 296-3142
Amy Walker Poland	Teacher Leader Consultant - HGSS	(785) 296-3142
Becky Warren	Public Service Executive I - SkillsUSA State Director	(620) 820-9367
Lisa Wicoff	Teacher Leader Consultant - Computer Science/Mathematics	(785) 296-3142
Amanda Williams	Public Service Administrator - Pathways Helpdesk, KCCMS	(785) 296-4908
Blanche Wulfkoetter	Teacher Leader Consultant - HGSS	(785) 296-3142

EARLY CHILDHOOD

Amanda Petersen	Director	(785) 296-7929
Becky Strohm	Administrative Specialist	(785) 296-6602
Kristy Cotton	State Interagency Coordinating Council Consultant	(785) 296-3953
Natalie McClane	Education Program Consultant, Preschool Coordinator	(785) 296-5081
Julie Rand	Education Program Consultant, State 619 Coordinator	(785) 296-1944
Lisa Williams	Kansas Parents as Teachers Consultant	(785) 296-4964

SPECIAL EDUCATION AND TITLE SERVICES

Bert Moore	Director	(785) 296-4949
Kayla Love	Administration Specialist	(785) 291-3097
Doug Boline	Assistant Director	(785) 296-2600
Gail Tripp	Senior Administration Assistant	(785) 296-2267
Heather Gould	Education Program Consultant	(785) 296-8965
Stacey Noll	Data Coordinator	(785) 296-3129
Janis Olds	Education Program Consultant	(785) 296-4906
Jean Rush	Coordinator	(785) 296-7884
Brian Dempsey	Assistant Director	(785) 296-5522
Sarah Reed	Administration Specialist	(785) 296-4602
Dr. Crista Grimwood, Ed.D	Education Program Consultant - Dispute Resolution Coordinator	(785) 296-7262
Stacie Martin	Education Program Consultant	(785) 296-6855
Josie McClendon	Education Program Consultant	(785) 296-5608
Ashley Niedzwiecki	Attorney	(785) 296-6518

Amy Rzadczynski	Education Program Consultant	(785) 296-6035
Mark Ward, J.D.	Attorney	(785) 296-0920
Kerry Haag	Assistant Director	(785) 296-4952
Karen Maddox	Public Service Administrator	(785) 291-3098
Shanna Hailey	Mental Health Education Program Consultant	(785) 296-4941
Mason Vosburgh	Special Education Data Manager	(785) 296-4945
Tate Toedman	Assistant Director	(785) 296-6714
Alysha Nichols	Senior Administration Assistant	(785) 296-6066
Nicole Clark	Program Consultant II	(785) 296-4925
Pat Hill	Education Program Consultant	(785) 296-3137
Cary Rogers	Education Program Consultant	(785) 296-0916
Kelly Steele	Education Program Consultant	(785) 296-2050
Maureen Tabasko	Education Program Consultant	(785) 296-1101
Roxanne Zillinger	Education Program Consultant	(785) 296-7260
Dean Zajic	Assistant Director	(785) 296-2425
Sami Reed	Administration Specialist	(785) 296-7454
Evelyn V. Alden	Research Analyst I	(785) 296-3868
Renee Brant	Public Service Executive	(785) 296-7077
Lori Creason	Public Service Executive	(785) 296-6886
Christine Macy	Education Program Consultant	(785) 296-3287
Angela Rice	Public Service Executive	(785) 296-1785
Christy Weiler	Coordinator	(785) 296-1712

TEACHER LICENSURE

Shane Carter	Director	(785) 296-5114
Tanae Olson	Administrative Specialist	(785) 296-5114
Michelle Treggo	Administrative Assistant	(785) 368-7436
Connie Comstock	Administrative Assistant - Licensure	(785) 296-2733
Jessica Apodaca	Public Service Administrator II	(785) 296-0952
Leslie Bruton	Coordinator	(785) 296-8011
Christa J. Chesmore	Education Program Consultant	(785) 296-1105
Cindy Coleman	Public Service Administrator	(785) 296-4935
Brea Cudney Christian	Education Program Consultant	(785) 296-6712
Ed Kalas	Education Program Consultant - Professional Development/Mentor	(785) 296-2198
Luke McClurg	Public Service Administrator	(785) 296-5138
Joe Midgley	Education Program Consultant	(785) 291-3371
Nikkolas Nelson	Education Program Consultant	(785) 296-7285
Diana Stephan	Licensure Coordinator	(785) 296-2280
Myra Stithem	Public Service Administrator	(785) 296-3835
Ann Yates	Educator Evaluation and Special Projects Coordinator	(785) 296-5140

Agency Staff List

BY FIRST NAME

KSDE MAIN PHONE (785) 296-3201

A							
Ali Cecchini	(785) 296-6289	Dennis Tate	(785) 296-4545	Julie V. Cook	(785) 296-3300	Nicole Clark	(785) 296-4925
Alicia Newland	(785) 296-2276	Dessa Gifford	(785) 296-2276	K		Nicole K. Norwood	(785) 296-2020
Alysha Nichols	(785) 296-6066	Diana Floyd	(785) 296-2276	Karen Campbell	(785) 296-2276	Nikkolas Nelson	(785) 296-7285
Amanda Noll	(785) 368-6207	Diana Stephan	(785) 296-2280	Karen Maddox	(785) 291-3098	P	
Amanda Petersen	(785) 296-7929	Diane Dysart	(785) 296-2276	Karen McClintock	(785) 291-0599	Pam Lamb	(785) 296-2164
Amanda Williams	(785) 296-4908	Dina Patel	(785) 296-6143	Karen Seymour	(785) 296-2276	Pam Rosebaugh	(785) 296-2276
Amber Boyington	(785) 296-3142	Donna Reinert	(785) 296-1208	Kathi Grossenbacher	(785) 296-3399	Pat Bone	(785) 296-2303
Amy Rzaczkynski	(785) 296-6035	Doug Boline	(785) 296-2600	Kathleen T. Mercer	(785) 296-2307	Pat Hill	(785) 296-3137
Amy Walker Poland	(785) 296-3142	E		Katie Albright	(785) 296-3872	Peggy Hill	(785) 296-4976
Andrea Pagán	(785) 296-8012	Ed Kalas	(785) 296-2198	Katy Hatch	(785) 296-2276	Philip Watkins	(785) 296-5229
Andrew Higgins	(785) 296-6766	Elaine Rodriguez	(785) 368-7436	Kay Emerson	(785) 368-6232	Phillip Salyer	(785) 368-8040
Andy Ewing	(785) 296-3860	Emily Bonilla	(785) 296-2276	Kayla Love	(785) 291-3097	R	
Angela Dittmer	(785) 296-2276	Eric Dehner	(785) 296-4961	Keith Dreiling	(785) 296-4567	R. Scott Gordon	(785) 296-3204
Angela Rice	(785) 296-1785	Eryn Davis	(785) 296-2276	Kelley Chanay	(785) 296-2276	Rachel Schiferl	(785) 296-2276
Angela Rosier	(785) 296-0784	Evelyn V. Alden	(785) 296-3868	Kelley Wiley	(785) 296-5069	Randy Watson	(785) 296-3202
Angie Brungardt	(785) 296-7056	F		Kelli Byrne	(785) 296-3637	Raymond L. Zwiener	(785) 296-2226
Angie Feyh	(785) 291-3574	Freddy Richter	(785) 296-8438	Kelly Spurgeon	(785) 296-4924	Regina L. Peszat	(785) 296-3142
Angie Funk	(785) 296-3264	G		Kelly Steele	(785) 296-2050	Renee L. Brant	(785) 296-7077
Ann Yates	(785) 296-5140	Gail Tripp	(785) 296-2267	Kent Reed	(785) 296-8109	Reylli Lopez	(785) 296-8392
Ann Marie Bush	(785) 296-7921	Greg Hiszczynskij	(785) 296-4928	Kerrie Wahlmeier Olson	(785) 296-3142	Richard Matteson	(785) 291-3534
Anna Stallbaumer	(785) 296-6829	Guy Shoulders	(785) 296-3956	Kerry Haag	(785) 291-3098	Rick Moen	(785) 296-6390
Annette Blevins	(785) 296-3551	H		Kevin Fross	(785) 291-3622	Robert Dillman	(785) 296-2276
Arleen Anderson	(785) 296-2276	Hailey Hawkinson	(785) 296-3142	Kevin Thomas	(785) 296-4966	Robert Hamilton	(785) 296-3142
Ashley Niedzwiecki	(785) 296-6518	Hannah Tillery	(785) 296-2276	Kim Burd	(785) 296-6058	Robyn Kelso	(785) 296-3444
B		Hayley Steinlage	(785) 296-6177	Kimberly Gilman	(785) 296-3142	Ronald Gish	(785) 296-4955
Barb Depew	(785) 296-2276	Heather Gould	(785) 296-8965	Kristy Cotton	(785) 296-3953	Rose Ireland	(785) 296-4973
Barbara Hughes	(785) 296-3203	Helen Swanson	(785) 296-4912	Kyle Lord	(785) 296-6155	Rose Olmstead	(785) 296-3142
Barbara A. Bahm	(785) 291-3538	Hilary Hanvey	(785) 296-2276	L		S	
Beccy Strohm	(785) 296-6602	Holly Steinlage	(785) 296-2276	Lara Staker	(785) 296-3142	S. Craig Neuenswander	(785) 296-3871
Becky Warren	(620) 820-9367	J		Laura Hodgson	(785) 296-2276	Sami Reed	(785) 296-7454
Ben Proctor	(785) 296-2303	Jake Steel	(785) 368-7356	Laurel S. Murdie	(785) 296-4976	Sara McCullah	(785) 296-4972
Benjamin Wolf	(785) 296-4958	Jamie Merklein	(785) 296-3674	Laurie J. Curtis	(785) 296-2749	Sarah Evans	(785) 296-3142
Bert Moore	(785) 291-4949	Jamie Ribordy	(785) 296-6310	Lee Jones	(785) 296-7922	Sarah Miles	(785) 296-3906
Beth Fultz	(785) 296-2325	Jan Williams	(785) 296-3263	Leslie Bruton	(785) 296-8011	Sarah Palubinski	(785) 296-3575
Blanche Wulfkoetter	(785) 296-3142	Janis Taylor	(785) 296-6221	Lisa Wicoff	(785) 296-3142	Sarah Reed	(785) 296-4602
Bob Mather	(785) 296-2317	Janis Olds	(785) 296-4906	Lisa Williams	(785) 296-4964	Sarah D. Perryman	(785) 296-1074
Brea Cudney Christian	(785) 296-6712	Jason Howe	(785) 296-3544	Lori Creason	(785) 296-6886	Shane Carter	(785) 296-2289
Brian Dempsey	(785) 296-5522	Jay Scott	(785) 296-6818	LuAnn Fox	(785) 296-3142	Shanna Hailey	(785) 296-4941
Brian Hosey	(785) 296-3709	Jean Rush	(785) 296-7884	Luke McClurg	(785) 296-5138	Sharon Bloom	(785) 296-3915
C		Jeanie Galemore	(785) 296-2276	Lynette Osner	(785) 296-2276	Sherry Root	(785) 296-3871
Cary Rogers	(785) 296-0916	Jenna Haag	(785) 296-6364	M		Shuming Li	(785) 296-7976
Casey Barezinsky	(785) 296-2078	Jenni Marlatt	(785) 296-7931	Makayla Auldridge	(785) 296-3202	Sierra Stanley	(785) 296-0976
Catherine Chmidling	(785) 291-3573	Jennifer Hayes	(785) 296-6331	Marisa Seele	(785) 296-7795	Stacey Noll	(785) 296-3129
Charlotte Zeller	(785) 291-3312	Jennifer E. Cook-Miller	(785) 296-7943	Mark Stephenson	(785) 296-7933	Stacie Martin	(785) 296-6855
Cherryl Delacruz	(785) 296-3142	Jennifer L. Barger	(785) 296-4965	Mark Ward	(785) 296-0920	Stephanie Alderman-Oler	(785) 296-3142
Cheryl Franklin	(785) 296-4909	Jennifer S. Shaffer	(785) 296-5240	Mary Liebl Johnson	(785) 296-3142	Stephen King	(785) 296-1893
Cheryl Johnson	(785) 296-2276	Jeri Powers	(785) 296-3142	Mary Lonker	(785) 296-3142	Stuart Lillie	(785) 368-7127
Cheryl D. Austin	(785) 296-3204	Jerry Wilson	(785) 296-6274	Mason Vosburgh	(785) 296-4945	T	
Chris Edwards	(785) 296-1222	Jessica Apodaca	(785) 296-0952	Matt Hrabe	(785) 296-6204	Tamla Miller	(785) 296-4950
Christa J. Chesmore	(785) 296-1105	Jessica Dorsey	(785) 296-3163	Matt Preston	(785) 291-3679	Tammy R. Blaess	(785) 296-2316
Christie Wyckoff	(785) 296-6321	Jessica Gomez	(785) 296-6329	Maureen Tabasko	(785) 296-1101	Tanae Olson	(785) 296-5114
Christine Armstrong	(785) 296-5711	Jessica Hess	(785) 296-3259	Meg Pearson	(785) 368-7436	Tate Toedman	(785) 296-6714
Christine Macy	(785) 296-3287	Jessica Reece	(785) 296-2276	Meg Richard	(785) 296-8108	Tierney Kirtdoll	(785) 296-3142
Christopher Ortega	(785) 291-3512	Jim Green	(785) 296-4946	Melanie Scott	(785) 291-3514	Timothy Enneking	(785) 296-0950
Christy Weiler	(785) 296-1712	Joann McRell	(785) 296-2144	Melissa Brunner	(785) 296-3142	Tina Ellsworth	(785) 296-3142
Cindy Coleman	(785) 296-4935	Joe Haverkamp	(785) 296-6206	Melissa Ostermeyer	(785) 296-5659	Todd Flory	(785) 296-3142
Connie Comstock	(785) 296-2733	Joe Midgley	(785) 291-3371	Michael Flenthrope	(785) 296-3142	Todd Lowe	(785) 296-7115
Crista Grimwood	(785) 296-7262	John Calvert	(785) 296-7056	Michael Reb	(785) 296-5125	Tom Tosh	(785) 296-5039
Crystal Roberts	(785) 296-2221	John Girodat	(785) 296-8676	Michelle Treggo	(785) 368-7436	Trey Austin	(785) 296-1203
D		John Hess	(785) 296-4962	Mike Jordan	(785) 296-1970	Tristen Cook	(785) 296-4036
Dale Brungardt	(785) 296-3872	Jolene Goodheart Peterson	(785) 296-3142	Myra Stithem	(785) 296-3835	W	
Daniel Kalas	(785) 296-7778	Josh Bailey	(785) 296-0758	Myron Melton	(785) 296-8110	Wendy M. Fritz	(785) 296-5363
David Fernkopf	(785) 296-8447	Josh Fairman	(785) 296-6254	N		X	
Dayna Kriley	(785) 296-2276	Josie McClendon	(785) 296-5608	Nancy Allen	(785) 296-6230	Xuewen Sheng	(785) 368-7435
Dean Zajic	(785) 296-2425	Joyce Huser	(785) 296-4932	Natalie Clark	(785) 296-3142		
Denise Dallman	(785) 296-5060	Juanita Anderson	(785) 296-1978	Natalie McClane	(785) 296-5081		
Denise Davis	(785) 368-7192	Julie Rand	(785) 296-1944	Nathan McAlister	(785) 296-3892		
Denise L. Kahler	(785) 296-4876	Julie C. Ewing	(785) 296-4349	Nathan Weedlin	(785) 296-5084		

BY LAST NAME

A	Albright, Katie (785) 296-3872	Franklin, Cheryl (785) 296-4909	Mercer, Kathleen T. (785) 296-2307	Schiferl, Rachel (785) 296-2276
	Alden, Evelyn V. (785) 296-3868	Fritz, Wendy M. (785) 296-5363	Merklein, Jamie (785) 296-3674	Scott, Jay (785) 296-6818
	Alderman-Oler, Stephanie (785) 296-3142	Fross, Kevin (785) 291-3622	Midgley, Joe (785) 291-3371	Scott, Melanie (785) 291-3514
	Allen, Nancy (785) 296-6230	Fultz, Beth (785) 296-2325	Miles, Sarah (785) 296-3906	Seele, Marisa (785) 296-7795
	Anderson, Juanita (785) 296-1978	Funk, Angie (785) 296-3264	Miller, Tamla (785) 296-4950	Seymour, Karen (785) 296-2276
	Anderson, Arleen (785) 296-2276	G	Moen, Rick (785) 296-6390	Shaffer, Jennifer S. (785) 296-5240
	Apodaca, Jessica (785) 296-0952	Galemore, Jeanie (785) 296-2276	Moore, Bert (785) 291-4949	Sheng, Xuewen (785) 368-7435
	Armstrong, Christine (785) 296-5711	Gifford, Dessa (785) 296-2276	Murdie, Laurel S. (785) 296-4976	Shoulders, Guy (785) 296-3956
	Auldridge, Makayla (785) 296-3202	Gilman, Kimberly (785) 296-3142	N	Spurgeon, Kelly (785) 296-4924
	Austin, Cheryl D. (785) 296-3204	Girodat, John (785) 296-8676	Nelson, Nikkolas (785) 296-7285	Staker, Lara (785) 296-3142
	Austin, Trey (785) 296-1203	Gish, Ronald (785) 296-4955	Neuenschwander, S. Craig (785) 296-3871	Stallbaumer, Anna (785) 296-6829
B		Gomez, Jessica (785) 296-6329	Newland, Alicia (785) 296-2276	Stanley, Sierra (785) 296-0976
	Bahm, Barbara A. (785) 291-3538	Goodheart Peterson, Jolene (785) 296-3142	Nichols, Alysha (785) 296-6066	Steel, Jake (785) 368-7356
	Bailey, Josh (785) 296-0758	Gordon, R. Scott (785) 296-3204	Niedzwiecki, Ashley (785) 296-6518	Steele, Kelly (785) 296-2050
	Barezinsky, Casey (785) 296-2078	Gould, Heather (785) 296-8965	Noll, Amanda (785) 368-6207	Steinlage, Hayley (785) 296-6177
	Barger, Jennifer L. (785) 296-4965	Green, Jim (785) 296-4946	Noll, Stacey (785) 296-3129	Steinlage, Holly (785) 296-2276
	Blaess, Tammy R. (785) 296-2316	Grimwood, Crista (785) 296-7262	Norwood, Nicole K. (785) 296-2020	Stephan, Diana (785) 296-2280
	Blevins, Annette (785) 296-3551	Grossenbacher, Kathi (785) 296-3399	O	Stephenson, Mark (785) 296-7933
	Bloom, Sharon (785) 296-3915	H	Olds, Janis (785) 296-4906	Stithem, Myra (785) 296-3835
	Boline, Doug (785) 296-2600	Haag, Jenna (785) 296-6364	Olmstead, Rose (785) 296-3142	Strohm, Beccy (785) 296-6602
	Bone, Pat (785) 296-2303	Haag, Kerry (785) 291-3098	Olson, Tanae (785) 296-5114	Swanson, Helen (785) 296-4912
	Bonilla, Emily (785) 296-2276	Hailey, Shanna (785) 296-4941	Ortega, Christopher (785) 291-3512	T
	Boyington, Amber (785) 296-3142	Hamilton, Robert (785) 296-3142	Osner, Lynette (785) 296-2276	Tabasko, Maureen (785) 296-1101
	Brant, Renee L. (785) 296-7077	Hanvey, Hilary (785) 296-2276	Ostermeyer, Melissa (785) 296-5659	Tate, Dennis (785) 296-4545
	Brungardt, Angie (785) 296-7056	Hatch, Katy (785) 296-2276	P	Taylor, Janis (785) 296-6221
	Brungardt, Dale (785) 296-3872	Haverkamp, Joe (785) 296-6206	Pagán, Andrea (785) 296-8012	Thomas, Kevin (785) 296-4966
	Brunner, Melissa (785) 296-3142	Hawkinson, Hailey (785) 296-3142	Palubinski, Sarah (785) 296-3575	Tillery, Hannah (785) 296-2276
	Bruton, Leslie (785) 296-8011	Hayes, Jennifer (785) 296-6331	Patel, Dina (785) 296-6143	Toedman, Tate (785) 296-6714
	Burd, Kim (785) 296-6058	Hess, Jessica (785) 296-3259	Pearson, Meg (785) 368-7436	Tosh, Tom (785) 296-5039
	Bush, Ann Marie (785) 296-7921	Hess, John (785) 296-4962	Perryman, Sarah D. (785) 296-1074	Treggo, Michelle (785) 368-7436
	Byrne, Kelli (785) 296-3637	Higgins, Andrew (785) 296-6766	Peszat, Regina L. (785) 296-3142	Tripp, Gail (785) 296-2267
C		Hill, Pat (785) 296-3137	Petersen, Amanda (785) 296-7929	V
	Calvert, John (785) 296-7056	Hill, Peggy (785) 296-4976	Powers, Jeri (785) 296-3142	Vosburgh, Mason (785) 296-4945
	Campbell, Karen (785) 296-2276	Hiszczynskij, Greg (785) 296-4928	Preston, Matt (785) 291-3679	W
	Carter, Shane (785) 296-2289	Hodgson, Laura (785) 296-2276	Proctor, Ben (785) 296-2303	Wahlmeier Olson, Kerrie (785) 296-3142
	Cecchini, Ali (785) 296-6289	Hosey, Brian (785) 296-3709	R	Walker Poland, Amy (785) 296-3142
	Chanay, Kelley (785) 296-2276	Howe, Jason (785) 296-3544	Rand, Julie (785) 296-1944	Ward, Mark (785) 296-0920
	Chesmore, Christa J. (785) 296-1105	Hrabe, Matt (785) 296-6204	Reb, Michael (785) 296-5125	Warren, Becky (620) 820-9367
	Chmidling, Catherine (785) 291-3573	Hughes, Barbara (785) 296-3203	Reece, Jessica (785) 296-2276	Watkins, Philip (785) 296-5229
	Clark, Natalie (785) 296-3142	Huser, Joyce (785) 296-4932	Reed, Kent (785) 296-8109	Watson, Randy (785) 296-3202
	Clark, Nicole (785) 296-4925	I	Reed, Sami (785) 296-7454	Weedin, Nathan (785) 296-5084
	Coleman, Cindy (785) 296-4935	Ireland, Rose (785) 296-4973	Reed, Sarah (785) 296-4602	Weiler, Christy (785) 296-1712
	Comstock, Connie (785) 296-2733	J	Reinert, Donna (785) 296-1208	Wicoff, Lisa (785) 296-3142
	Cook, Julie V. (785) 296-3300	Johnson, Cheryl (785) 296-2276	Ribordy, Jamie (785) 296-6310	Wiley, Kelley (785) 296-5069
	Cook, Tristen (785) 296-4036	Jones, Lee (785) 296-7922	Rice, Angela (785) 296-1785	Williams, Amanda (785) 296-4908
	Cook-Miller, Jennifer E. (785) 296-7943	Jordan, Mike (785) 296-1970	Richard, Meg (785) 296-8108	Williams, Jan (785) 296-3263
	Cotton, Kristy (785) 296-3953	K	Richter, Freddy (785) 296-8438	Williams, Lisa (785) 296-4964
	Creason, Lori (785) 296-6886	Kahler, Denise L. (785) 296-4876	Roberts, Crystal (785) 296-2221	Wilson, Jerry (785) 296-6274
	Cudney Christian, Brea (785) 296-6712	Kalas, Daniel (785) 296-7778	Rodriguez, Elaine (785) 368-7436	Wolf, Benjamin (785) 296-4958
	Curtis, Laurie J. (785) 296-2749	Kalas, Ed (785) 296-2198	Rogers, Cary (785) 296-0916	Wulfekoetter, Blanche (785) 296-3142
D		Kelso, Robyn (785) 296-3444	Root, Sherry (785) 296-3871	Wyckoff, Christie (785) 296-6321
	Dallman, Denise (785) 296-5060	King, Stephen (785) 296-1893	Rosebaugh, Pam (785) 296-2276	Y
	Davis, Denise (785) 368-7192	Kirtdoll, Tierney (785) 296-3142	Rosier, Angela (785) 296-0784	Yates, Ann (785) 296-5140
	Davis, Eryn (785) 296-2276	Kriley, Dayna (785) 296-2276	Rush, Jean (785) 296-7884	Z
	Dehner, Eric (785) 296-4961	L	Rzadczynski, Amy (785) 296-6035	Zajic, Dean (785) 296-2425
	Delacruz, Cherryl (785) 296-3142	Lamb, Pam (785) 296-2164	S	Zeller, Charlotte (785) 291-3312
	Dempsey, Brian (785) 296-5522	Li, Shuming (785) 296-7976	Salyer, Phillip (785) 368-8040	Zwiener, Raymond L. (785) 296-2226
	Depew, Barb (785) 296-2276	Liebl Johnson, Mary (785) 296-3142	FAX	
	Dillman, Robert (785) 296-2276	Lillie, Stuart (785) 296-7127	Accreditation and Design (785) 296-7933	
	Dittmer, Angela (785) 296-2276	Lonker, Mary (785) 296-3142	Board of Education (785) 291-3791	
	Dorsey, Jessica (785) 296-3163	Lopez, Reyli (785) 296-8392	Career, Standards and Assessment Services (785) 291-3791	
	Dreiling, Keith (785) 296-4567	Lord, Kyle (785) 296-6155	Child Nutrition and Wellness (785) 296-2032	
	Dysart, Diane (785) 296-2276	Love, Kayla (785) 291-3097	Communications and Recognition Programs (785) 296-7933	
E		Lowe, Todd (785) 296-7115	Division of Fiscal and Administrative Services (785) 296-6659	
	Edwards, Chris (785) 296-1222	M	Division of Learning Services (785) 291-3791	
	Ellsworth, Tina (785) 296-3142	Macy, Christine (785) 296-3287	Early Childhood (785) 291-3791	
	Emerson, Kay (785) 368-6232	Maddox, Karen (785) 291-3098	Fiscal Auditing (785) 296-2032	
	Enneking, Timothy (785) 296-0950	Marlatt, Jenni (785) 296-7931	Fiscal Services and Operations (785) 296-6659	
	Evans, Sarah (785) 296-3142	Martin, Stacie (785) 296-6855	Service and Federal Aid Unit (785) 296-6659	
	Ewing, Andy (785) 296-3860	Mather, Bob (785) 296-2317	General Counsel (785) 296-7933	
	Ewing, Julie C. (785) 296-4349	Matteson, Richard (785) 291-3534	Human Resources (785) 296-6659	
F		McAlister, Nathan (785) 296-3892	Information Technology (785) 296-6659	
	Fairman, Josh (785) 296-6254	McClane, Natalie (785) 296-5081	Office of the Commissioner (785) 291-3791	
	Fernkopf, David (785) 296-8447	McClendon, Josie (785) 296-5608	Safe and Secure Schools Unit (785) 296-6659	
	Feyh, Angie (785) 291-3574	McClintock, Karen (785) 291-0599	School Bus Safety Education Unit (785) 296-6659	
	Flenthrope, Michael (785) 296-3142	McClurg, Luke (785) 296-5138	School Finance (785) 296-6659	
	Flory, Todd (785) 296-3142	McCullah, Sara (785) 296-4972	Special Education and Title Services (785) 291-3791	
	Floyd, Diana (785) 296-2276	McRell, Joann (785) 296-2144	Teacher Licensure (785) 296-7933	
	Fox, LuAnn (785) 296-3142	Melton, Myron (785) 296-8110		