

Driver Education

Kansas leads the world in the success of each student.



July 2021

**Information may have changed.*

Previous Newsletters available by clicking [here](#)



2021 July 4th Drive Sober or Get Pulled Over Campaign

We all love to celebrate the 4th of July with family, friends, food, and fireworks. Yet, all too often the festivities turn tragic on our nation's roads. This American holiday is also one of the deadliest holidays of the year due to drunk-driving crashes. Traffic Safety Marketing gives access to enforcement marketing tools that can be used to fit your needs and objectives while, at the same time, partnering with other states, communities, and organizations on this drunk driving prevention initiative. Click [Here](#) For Marketing Tools! Visit www.trafficsafetymarketing.gov for free media resources.



The Annual ADTSEA Conference brings together national leaders in traffic safety and driver education in the interest of quality programs. This is an opportunity to come together and share information that is a valuable part of our continued education.

ADTSEA program planners prepare an extensive list of presenters to include national leaders, motivational speakers, and awards recognition. The sessions are designed to assist attendees by providing contact hours to meet Professional Development requirements.

July 25-28, 2021 [65th Annual ADTSEA Conference](#) | Sun. – Wed. — Knoxville, TN

July 24-27, 2022 [66th Annual ADTSEA Conference](#) | Sun. – Wed. — Vancouver, WA



Kansas Driver Safety Education Association (KDSEA)

Member Application [here](#)

Contact Gary Scott 1617 E Sheridan Bridge Lane
Olathe, Kansas 66062 Cell: 913-481-1401 E-mail: scottskufhsu@sbcglobal.net or

scottskufhsu@gmail.com

ATTENTION All Kansas Driver Educators

Kansas Driver Safety Education Association (KDSEA) will be hosting the [ADTSEA](#) Conference in Wichita, Kansas in 2023. The dates are **July 16-19, 2023** at the [Hilton DoubleTree](#).



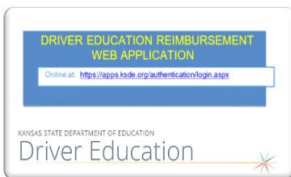
Excellent opportunity to learn from the best and open to public and private driving schools.



\$60.00 gets Kansas membership in both KDSEA and ADTSEA. Start planning now and help KDSEA show off our State to the rest of the USA.



Kansas Driver Safety Education Association (KDSEA) Member [Application here](#)



Driver Education Reimbursement

Due August 31st of each year! Accuracy and completeness in reporting are extremely important since reimbursement is based on information given on the application. Handbook is available online on [ksde.org https://apps.ksde.org/authentication/login.aspx](https://apps.ksde.org/authentication/login.aspx)

DRIVER EDUCATION INSTRUCTOR APPROVAL FORM

When Driver Education Instructors renew their teaching license with KSDE, the DRIVER EDUCATION INSTRUCTOR APPROVAL FORM needs to be filled out and returned to KSDE.

Driver Education

Kansas leads the world in the success of each student.



Driver Education REGIONAL MEETINGS *Date(s) and Locations are subject to change. Regional Meetings will be recorded and posted on the KDSE website under [Driver Education](#).

Mon., Aug. 2, 2021
Mon., Dec. 20, 2021
Mon., March 7, 2022

Registration: <https://forms.gle/PL9dwSqRjIqXLN7v9>
1:00pm-3:00p; Location TBD

It is recommended for schools to send personnel responsible for overseeing Driver Education.

1. Review procedures for a lost cert. of completion, auditing info, Handbooks and DMV changes/charges for DE-99's, etc.
2. Receive the latest information necessary to offer a state recognized driver education course.
3. Some Regional Meetings will cover Professional Development topics



Welcome New Members - Kansas Driver Education Advisory Board

Shawn McGuire - USD 264, Cherry Steffen - Washburn University, Perry Warden - Premier Driving Schools/KS International Drivers Ed, and Russ

Yost - Yost Driving School. *Mission Statement: The Advisory Board will assist to strengthen the State Driver Education Program by providing real world experience. The board will advise, assist, support and advocate for driver education. An advisory board is comprised of knowledgeable, prominent and credible stakeholders in their field of expertise. If you have any questions or comments, contact Robyn Meinholdt at rmeinholdt@ksde.org*



Kansas Curricular Standards for Driver Education

revised by the State Board of Education May 2018 Click [here](#) or can be found on ksde.org under Driver Education.

MSF (Motorcycle Safety Foundation) Courses

Find a course <https://www.msf-usa.org/Default.aspx>

KSDE Approved Motorcycle Program

Locations [Find a location](#)

Motorcycle Tips for Riders (courtesy of KTSRO.org)

- Before riding, complete a rider's education course and obtain a class "M" endorsement on your driver's license.
- Wear a helmet and eye protection every time you ride. Motorcyclists should also wear bright, thick protective clothing.
- Always ride sober. Operating a motorcycle takes a great deal of mental focus and physical maneuvering, so alcohol or other impairing substances and motorcycles just don't mix.
- Riders should strategically use their lane position to see and be seen on the highway. Motorcyclists should also combine turn signals and hand signals to draw attention to themselves when switching lanes.

Want to Learn to Ride a Motorcycle?

Need \$50 Bucks?

Here's How
Kansas residents only!

To get a \$50 reimbursement for attending a Motorcycle Safety Foundation Rider Course all you need to do is:

- * Paid Receipt of Attendance
- * Certificate of Completion
- * Apply at ktsro.org/motorcycle-trainings

Kansas Traffic Safety Resource Office
800-416-2522
DRIVE TO ZERO

Driver Education

Kansas leads the world in the success of each student.



Driver's Ed Toolkit from Kansas Traffic Safety Resource Office (KTSRO)

The Kansas Traffic Safety Resource Office is introducing an updated Driver's Education Tool kit and parent guide. Please visit the website by clicking [HERE](#) for more information and to order yours today! Please contact Jenny Lancaster at jlancaster@dcca.org with any questions. Kansas Traffic Safety Resource Office www.ktsro.org | ktsro@dcca.org | Main Office: 800.416.2522



Commercial School Instructor Requirements (Verification of certification is always needed for new instructors and renewals; form available [here](#)) [Kansas Statute 8-276.](#)

Drivers' training schools; qualifications for instructor of school. Every person in order to qualify as an instructor for a driving school shall meet the following requirements:

(a) Present to the state board evidence of: (1) Credit in driver education and safety from an accredited college or university equivalent to credits in those subjects which are required of instructors in the public schools of Kansas; (2) having a valid Kansas teacher's certificate coded for driver education;

OR (3) having completed at least 30 hours of classroom and 24 hours of behind the wheel training under the direct supervision of an individual who is presently licensed as an instructor by the state board under paragraphs (1) or (2) and who has been continuously licensed and who has actively instructed students for a period of at least three years.

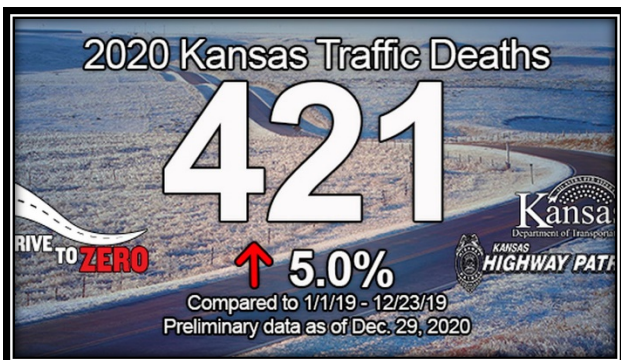
- (b) Have knowledge of the Kansas operation lifesaver highway/railroad grade crossing safety program.
- (c) Be physically able to operate safely a motor vehicle and to train others in the operation of motor vehicles.
- (d) Provide a certificate of health from a medical doctor stating that such person is free from contagious disease.
- (e) Hold a valid Kansas drivers' license.
- (f) Pay to the state board an application fee of \$5.



KDOR/DMV Driver's Education Instructor Portal

Commercial and school district appointed Driver's Education Instructors in the state of Kansas are required to submit student applications, pay application fees, and print documentation from the Driver's Education Instructor Portal. In order to obtain access to the portal, Instructors must be approved by the [Kansas Department of Education](#) and register in the Customer Service Center prior to use.

New Driver Education School? All new Driver's Education Instructor Portal users will need to complete instructional [computer-based training \(CBT\)](#) in order to be granted access to the portal. Please fax or email your completion certificate along with the FEIN Request Form to the [Medical & Vision Unit](#) in order to set up your account. You will be contacted with your account information within 7-10 business days.



<https://www.wibw.com/2021/01/07/traffic-fatalities-up-5-in-2020-over-2019-in-kansas/>



In partnership with KDOR: Driver Education Students Age 14 Clarification

- Because every school begins their driver's education class at different times there is no yearly cut off. Every driver's education student must be 14 years of age on the day class begins or they must turn 14 within 1-2 days of the beginning of class. Review the student's birthdate and if they will not be 14 within 1-2 days of class beginning they will have to take your driver's education class at a later time when they meet that criteria.
- If you enroll earlier in the year, a 13-year-old student must turn 14 prior to the beginning of class or turn 14 within 1-2 days of class starting. This student can fill out the paper application but it cannot be entered into the Portal until the day they turn 14. This means you must have access to a computer and printer to do the data entry, pay for the application and print the documents. If you are not able to do this, then that student will have to wait to take driver's education until the following school year or sign up with a Commercial Driver's Education school when they are 14 or turn 14 within 1-2 days of class starting.
- Students that are not 14 may not participate in anything other than lectures the first 1-2 days of class until they turn 14. This means they cannot take any testing given by their USD school, Greenbush or a Commercial Driving School until they turn 14 which includes online quizzes, chapter tests or the handbook test. NO TESTING before age 14 is set by statutes.



Kansas Handbook Test & Permit

With advisement from the Kansas Driver Education Advisory Board, and requirement(s) from the DMV/KDOR, please see statements below: Previous practice stands to have students take the Kansas Handbook Test in person; Kansas Handbook tests **CANNOT** be taken or presented online. It is **recommended** students take the

Kansas Handbook test prior to the DE class. This is **recommended** not required, however this would allow drive instructors to begin driving on the first day of class with those students who already hold their permit. The student would still be required to attend DE class and learn (or review) the content covered. The ones who already held a permit could be exempt from having to take the actual exam.

CLARIFICATION: If you have a student that has an expired Permit issued by the Division of Vehicles or the Permit will expire during class, you will enter the Portal application with the expired Permit K number and then give the student the written test along with the rest of the class. As long as the student passes, you will give the student the Parent/Guardian DE-99 Permit and tell them to take it to the Division of Vehicles to have a new Permit issued.



Midwest Transplant - Saving lives with dignity and

compassion Through organ, eye and tissue donation, we all have the power to give

hope and share life. 1900 W. 47th Place, Suite 400 | Westwood, KS 66205 | 913-262-1668 Elizabeth Gonzales-Manns EGonzales@mwn.org



Operation Lifesaver Train Safety

John H. LaGesse 785-760-2543

johnh11@hotmail.com Presenters with knowledge of the Kansas operation lifesaver highway/railroad grade crossing safety program.



Kansas leads the world in the success of each student.

Who do I contact and for what?

Kansas Department of Revenue (KDOR): Kansas Division of Vehicles (DMV), Driver Licensing, Instructor Portal including DE99: Michele Chavez (785) 368-8532 (desk) | (785) 296-5857 (fax) | Michele.Chavez@ks.gov | www.ksrevenue.org | 300 SW 29th St. | Topeka, Kansas 66601

Kansas State Department of Education (KSDE): Instructor Licenses, Driver Education Curriculum, Reimbursement Portal, Driver Education Professional Development/Resources: Robyn Meinholdt (785) 296-3379 (desk) | rmeinholdt@ksde.org ksde.org | 900 SW Jackson St., Ste. 106 | Topeka, KS 66612

The Kansas State Department of Education does not discriminate on the basis of race, color, national origin, sex, disability or age in its programs and activities and provides equal access to the Boy Scouts and other designated youth groups. The following person has been designated to handle inquiries regarding the nondiscrimination policies: KSDE General Counsel, Office of General Counsel, KSDE, Landon State Office Building, 900 S.W. Jackson, Suite 102, Topeka, KS 66612, (785) 296-3201. Rev. 6/16/2021