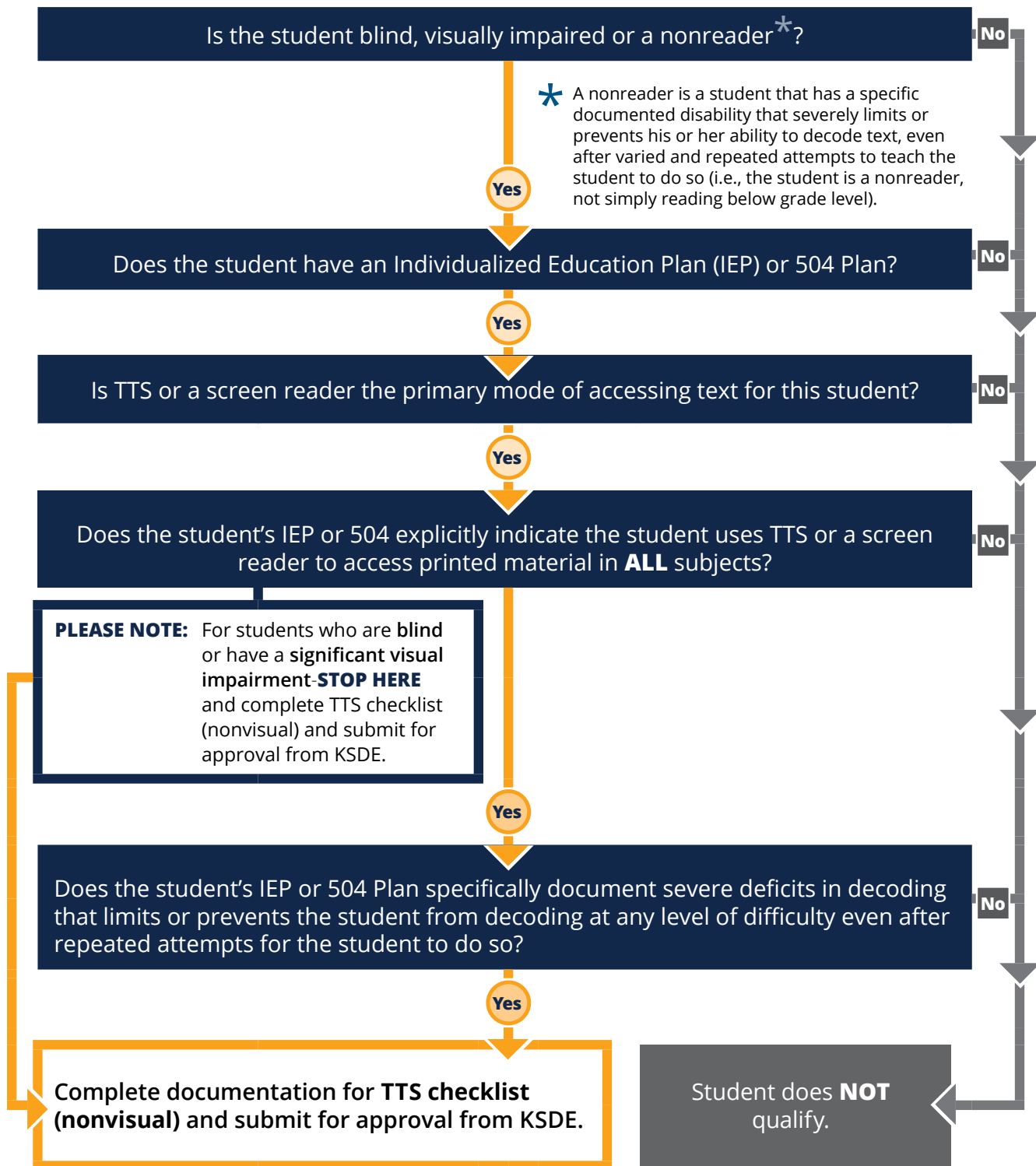




# Text-to-Speech (TTS) Accommodations Available on the Kansas Assessment Program (KAP)

TTS AUDIO	DESCRIPTION
Directions	<b>All students</b> can choose to have a synthetic voice read directions aloud on all assessments. This is a universal feature.
Science	<b>All students</b> can choose to have a synthetic voice read directions and items aloud on the science assessment. This is a universal feature.
Text and Test Items	A synthetic voice will read text and test items. A student who needs a TTS accommodation is one whose ability to convey knowledge of the content area is severely limited by whether he or she can read the assessment materials; this student would not be successful in the classroom without the read-aloud accommodation. To use the TTS accommodation on the state assessment, the student must have the read-aloud accommodation provided in the classroom on a regular basis (that is, as an on-going practice for both classroom instruction and classroom assessment). Neither English learners (EL) nor students who receive Title I or special education services automatically qualify for the TTS accommodation. It is the local district's responsibility to define "severely limited" and to quantify a "regular basis" for classroom instruction and assessments. Districts may provide their own tools and resources for determining need of the TTS accommodations. <b>The Kansas State Department of Education's expectation is that qualified students are at least one year below grade level in English Language Arts (ELA) and that they use the accommodation at least 50% of the time on classroom assignments and 100% of the time on classroom assessments that contribute to classroom grades.</b> This accommodation must be selected on a student's PNP. <b>Text and graphics are the default and will read tables and graphs on the mathematics assessment. Text only is not used for KAP.</b>
ELA Passages (nonvisual)	A synthetic voice will read the ELA passages. For a very limited number of students, TTS of reading passages in ELA (nonvisual) may be permitted. <b>Students with an IEP or 504 plan who cannot access printed text because of blindness, low vision or nonreader* may have the Text-to-Speech Checklist (nonvisual) submitted for approval to <a href="mailto:TTSnonvisual@ksde.org">TTSnonvisual@ksde.org</a> by January 31<sup>st</sup>. This accommodation is appropriate for student's whose IEP/504 Plan explicitly indicates the student's primary mode of accessing printed materials is through text-to-speech or a screen reader.</b> <p>* A nonreader is a student that has a specific disability that severely limits or prevents his or her ability to decode text, even after varied and repeated attempts to teach the student to do so (i.e., the student is a non-reader, not simply reading below grade level).</p> <p>The read-aloud accommodation does not refer to an adult reading an occasional word, an occasional distractor, an occasional stem, or an occasional question to the student. However, an adult reading any words in the ELA passage is prohibited.</p>

## TTS ACCOMMODATION FOR ELA PASSAGES (NONVISUAL) FLOW CHART



For more information, contact:

**Cary Rogers**  
 Education Program Consultant  
 Special Education and Title Services  
 (785) 296-0916  
[crogers@ksde.org](mailto:crogers@ksde.org)



Kansas State Department of Education  
 900 S.W. Jackson Street, Suite 102  
 Topeka, Kansas 66612-1212  
[www.ksde.org](http://www.ksde.org)