

PICNIC TABLE

BILL OF MATERIALS

32' x 2" x 2" x 1/8" Angle Iron
12" x 1/4" x 2" Flat metal
3 x 12' x 2" x 10" Boards
32 - 1/4" x 2" Carriage Bolts
Metal Primer
Enamel Paint

CUT LIST

2- 60" x 2" x 2" x 1/8" Angle iron - Seat cross bars
3- 36" x 2" x 2" x 1/8" Angle iron - Top cross bars
4- 32 7/8" x 2" x 2" x 1/8" Angle iron (60 Degree angle) - Legs
2- 27" x 2" x 2" x 1/8" Angle iron - Braces
4- 3" x 1/4" x 2" Flat metal - Feet
6- 6' x 2" x 10" Boards

CONSTRUCTION PROCEDURE

1. Cut two 60" x 2" x 2" x 1/8" angle iron with 45 degree angles for the Seat cross bars.
2. Cut three 36" x 2" x 2" x 1/8" angle iron with 45 degree angles for the Top cross bars.
3. Cut two 32 7/8" x 2" x 2" x 1/8" angle iron with 60 degree angles for the Legs.
Note: There will be a right and left side to the legs. Turn angle iron towards center of picnic table. See fig. 4.
4. Cut two 32 7/8" x 2" x 2" x 1/8" angle iron with 60 degree angles for the Legs.
5. Weld Seat cross bars and Legs together as shown in fig. 3.
6. Cut two 27" x 2" x 2" x 1/8" angle iron for Braces in the center. Angle ends to fit.
7. Cut four 3" x 1/4" x 2" flat metal for Feet. See fig. 3.
8. Weld the Feet on the Legs and weld the Braces in the Center and place center Top cross bar and weld.
9. Grind all sharp edges, remove weld spatter, prime metal, and paint with enamel paint.
10. Cut six 6' x 2" x 10" boards for seat and table top.
11. Place boards on metal frame, drill 1/4" holes, and bolt boards with 1/4" x 2" carriage bolts. Use a bar clamp to hold boards together while bolting.

Note: Use a router to round off top edges of seat and top.

PICNIC TABLE

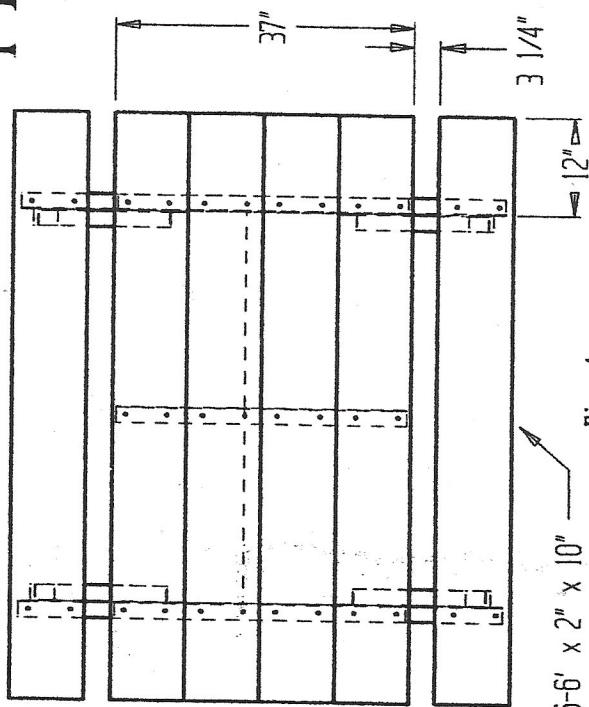


Fig. 1
Top View

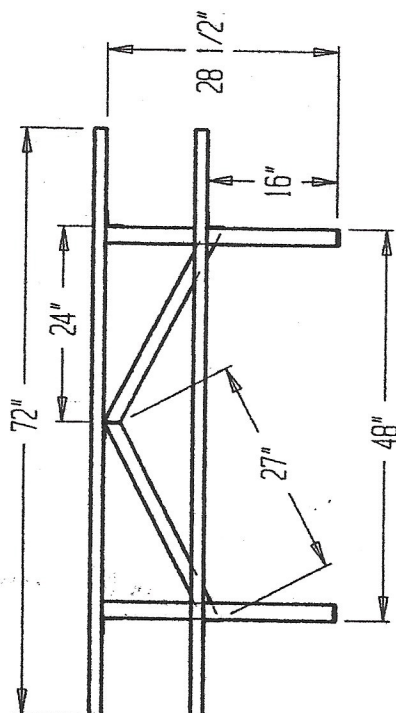


Fig. 2
Front View

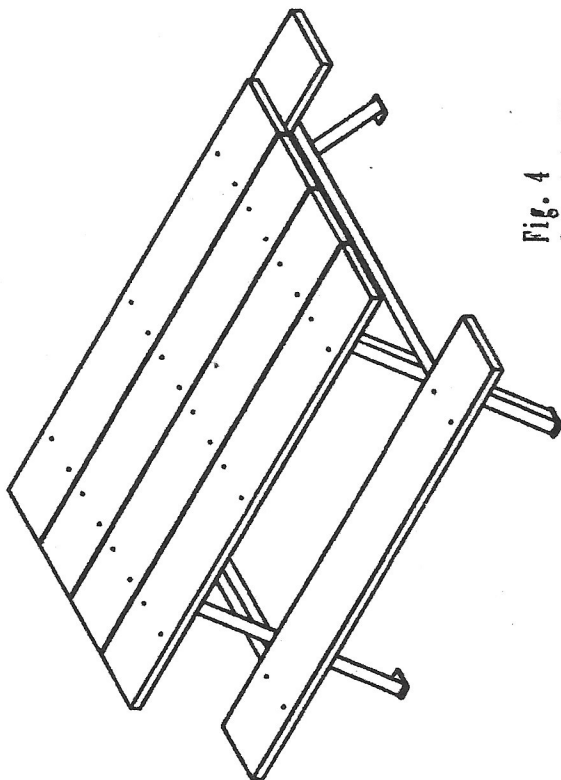


Fig. 4
Isometric View

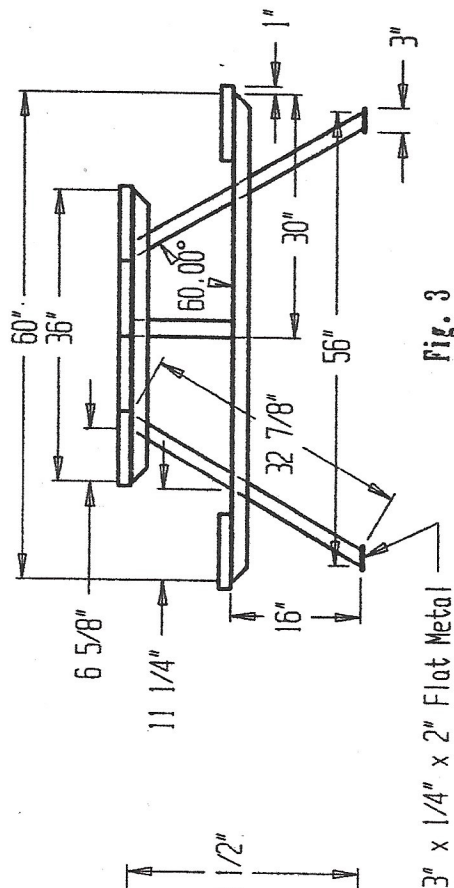


Fig. 3
End View