

FACT SHEET

Student Data Collection in Kansas



Collecting information at both the student and program level is necessary for public, state and federal reporting and funding as well as school feedback reports. The Family Educational Rights and Privacy Act (FERPA) provides parameters for what is permissible when sharing student information and KSDE has implemented strict data governance guidelines and processes to protect the privacy of every student and to ensure the confidentiality and security of all data collected and managed. Schools are required to report only data necessary to support state and federal funding/reporting. KSDE obtains some student level data from other sources in order to provide value-added feedback to educators and schools.

What Individual Student Data Does KSDE Collect?

Core Data Collected Regarding Every Student:

Demographics

- Name
- Birthdate
- Race/Ethnicity
- Gender

Transportation

- Miles transported
- Round trip
- Address
- Non-resident

Enrollment and Attendance

- School district
- Days in membership and attendance
- Truancy
- Minutes enrolled
- Concurrent enrollment
- Exit withdrawal date/type
- Special circumstances transfer
- Post-graduation plans

Program Participation

- Free/reduced lunch
- Virtual Education
- SPED: Primary disability/Gifted/ 504
- ESOL
- CTE contact minutes
- Title 1 participation
- Child of military family
- Immigrant status
- State Assessments

Course Outcomes

- Local course code
- Kansas course identifier
- Completion status
- Letter grade/ percent grade
- Educator ID

Program Area Data Collected for Students Participating in the Program:

Early Childhood

- Program participation (start/end dates)
- Additional survey data (families not required to provide):
 - Home environment/Health

Special Education

- Disabilities / gifted
- Services received
- Discipline
- Post-school outcomes

Discipline

- Collected at aggregate level for non-SPED students
- Emergency/safety interventions

Migrant

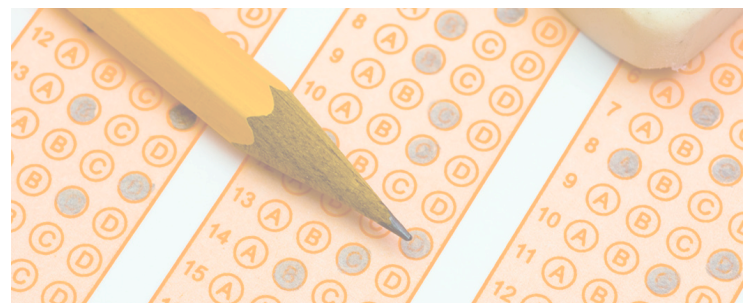
- Approved Certificate of Eligibility (parent information, employment, qualifying move)
- Services received

State Assessments

- Score/performance category
- Special circumstances
- Accommodations

Career and Technical Education

- Pathway participant/ concentrator
- Single parent status (of student)



From what Other Sources Does KSDE Obtain Student Level Data?

- Kansas Board of Regents
- National Student Clearinghouse
- ACT
- College Board (SAT/AP)

How are the Data Used?

Aggregated Data:

- School and district performance calculations
- Program monitoring and evaluation
- School feedback reports
- Federal reporting/funding
- Public reporting

Individual Student Data:

- Calculations for state funding
- Administering state assessments
- Authenticated reports to school staff to inform instruction and monitor and improve programs
- Migrant Student Information eXchange
- Studies approved through the KSDE Data Request Review Board

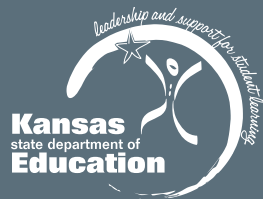
Who has Access to Student Level Data?

- Approved KSDE technical and data staff
- Approved school and district staff through authenticated applications
- Approved KSDE staff and vendors through authenticated applications

Resource

- KSDE Data Governance Handbook: www.ksde.org/Default.aspx?tabid=83
- KIDs File Specifications: www.ksde.org/Default.aspx?tabid=2508

For more information:



Information Technology
 Kansas State Department of Education
 120 SE 10th Avenue
 Topeka, Kansas 66612-1182
 (785) 296-7931

Common Core Website: www.ksde.org - Kansas College and Career Ready Standards

We're Moving: Please note KSDE's new address effective October 28, 2013

Kansas State Department of Education
 Information Technology
 Landon State Office Building
 900 SW Jackson, Suite 351
 Topeka, Kansas 66612