

2012-2013 Licensed Personnel Report

Teacher Licensure and Accreditation



Commonly Used Acronyms

TLA Specific

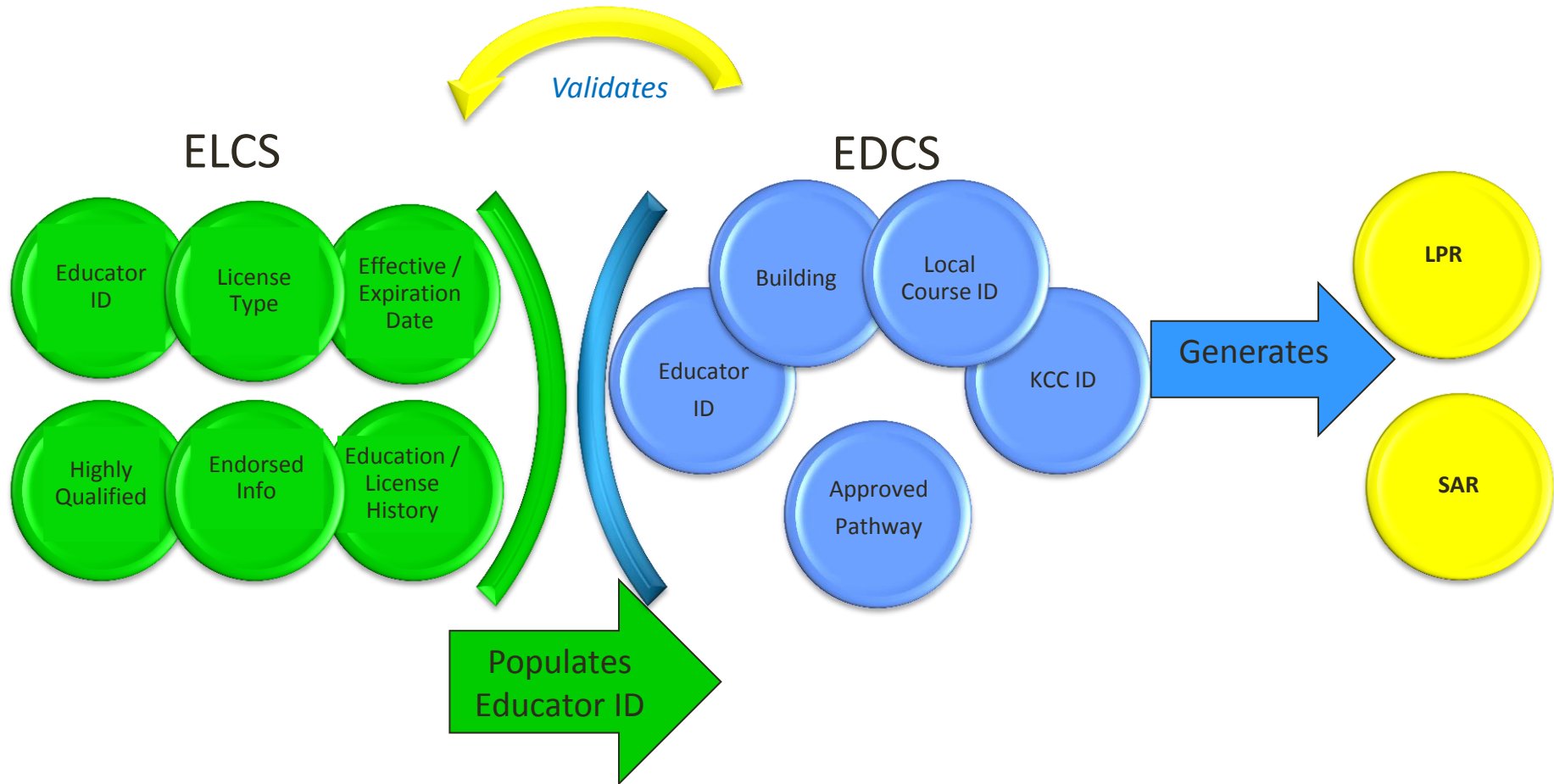
- Educator Data Collection System (EDCS)
- Educator Licensure Collection System (ELCS)
- Licensed Personnel Report (LPR)
- Staff Assignment Report (SAR)
- Teacher Licensure and Accreditation (TLA)

Non-TLA Specific

- Career and Technical Education (CTE)
- Kansas Course Code Management System (KCCMS)
- Kansas Individual Data on Students (KIDS) Collection System
- Student Course Report (STCO)

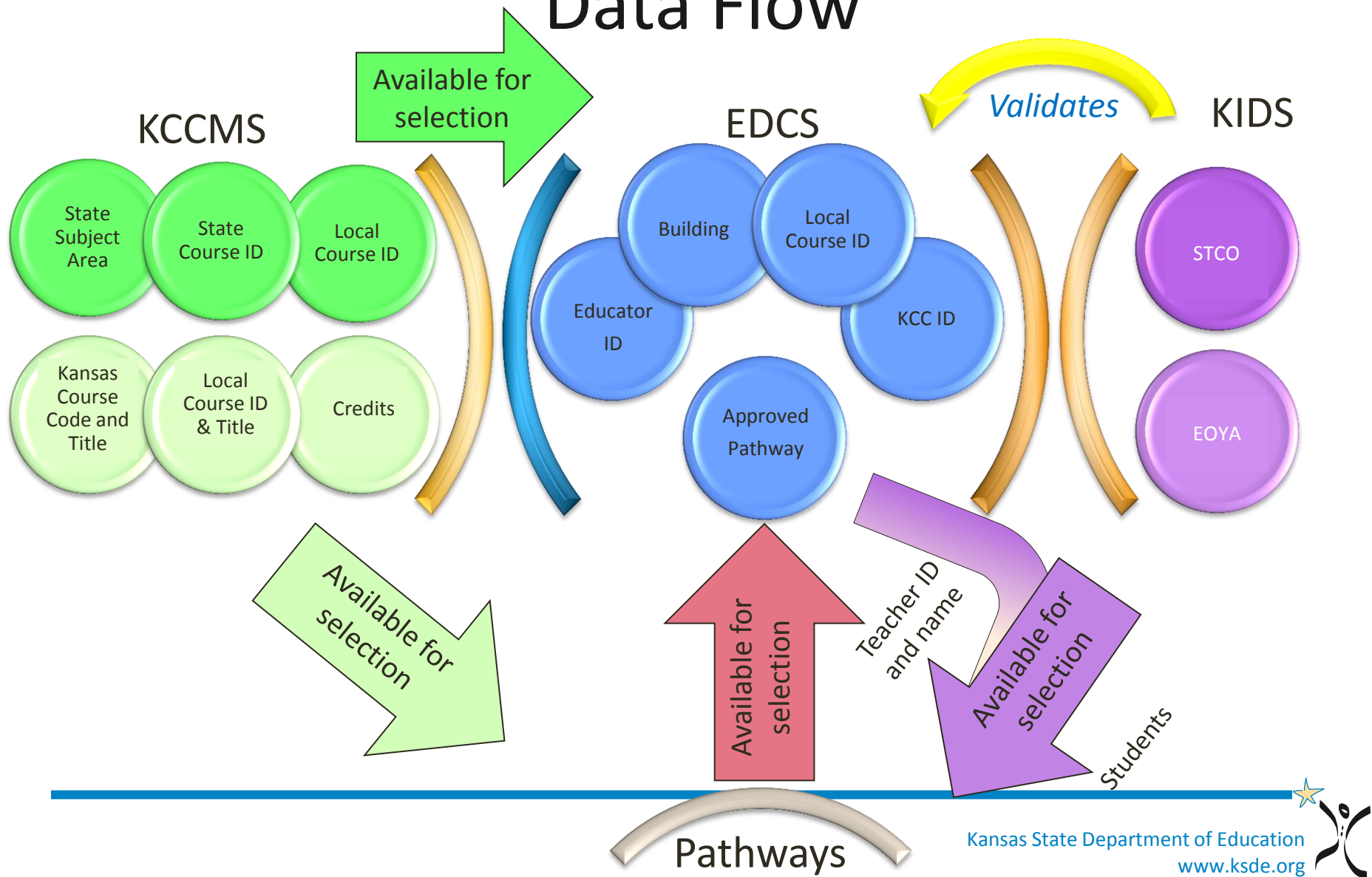


Educator License Data and Assignment Flow



Course-Teacher-Student-CTE

Data Flow



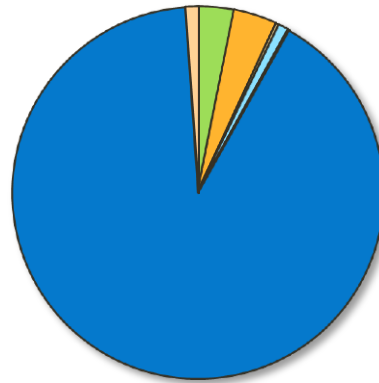
2012-2013 Licensed Personnel Report

Total Licensed Personnel and Gender Disaggregation

	Number	Percent
Total Licensed Personnel	43,973	100.00%
Gender		
Female	33,040	75.14%
Male	10,933	24.86%

2012-2013 Licensed Personnel Report

Entrance Code



- In-State USD
- New Teacher From College
- Out of Field
- Out of State
- Private School
- Returning Staff
- Other

Entrance Code:	2011-12		2012-13	
	Number	Percent	Number	Percent
Educator from another Kansas USD	1,349	3.11%	1,606	3.65%
New Teacher from College	1,621	3.77%	1,857	4.22%
New Teacher from Kansas College	1,346	3.11%	1,570	3.57%
New Teacher from Out-of-State College	275	0.63%	287	0.65%
Experienced teacher returning from another area of employment	119	0.27%	171	0.39%
Experienced teacher from outside Kansas	372	0.86%	439	1.00%
Experienced teacher coming from a Private School	69	0.16%	116	0.26%
Returning employee	39,406	90.99%	38,965	88.61%
Other	462	1.07%	936	2.13%



2012-2013 Licensed Personnel Report

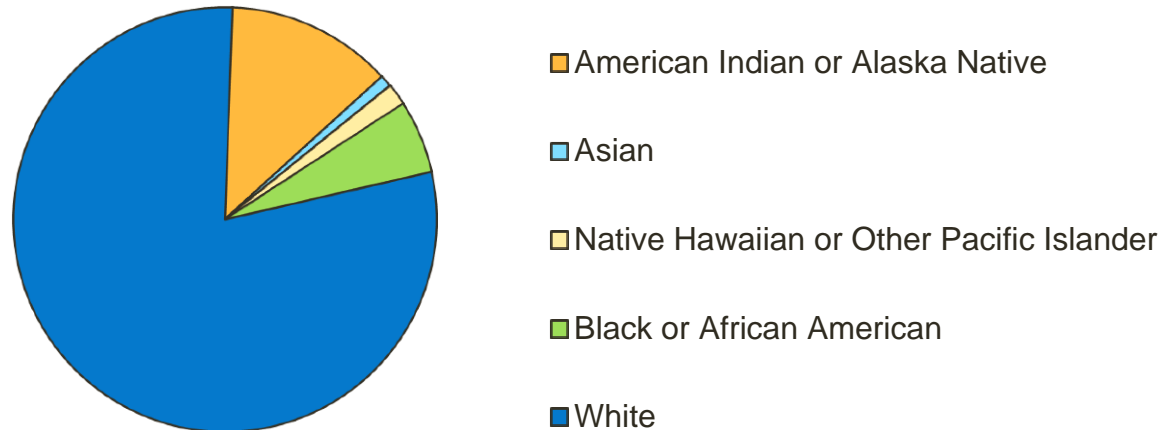
Ethnicity

Ethnicity	2012-2013	
<i>Hispanic or Latino</i>	976	2.22%
<i>Non-Hispanic or Latino</i>	42,997	97.78%



2012-2013 Licensed Personnel Report

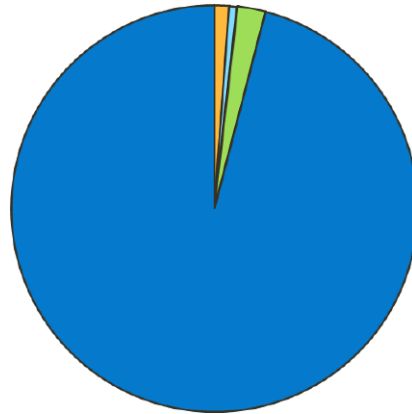
Ethnicity – Hispanic or Latino



<i>Ethnicity - Hispanic or Latino</i>	Number	Percent
American Indian or Alaska Native	129	13.22%
Asian	8	0.82%
Native Hawaiian or Other Pacific Islander	14	1.43%
Black or African American	52	5.33%
White	832	85.25%

2012-2013 Licensed Personnel Report

Ethnicity – Non-Hispanic or Latino



- American Indian or Alaska Native
- Asian
- Native Hawaiian or Other Pacific Islander
- Black or African American
- White

Ethnicity - Non-Hispanic or Latino	Number	Percent
American Indian or Alaska Native	472	1.10%
Asian	256	0.60%
Native Hawaiian or Other Pacific Islander	43	0.10%
Black or African American	772	1.80%
White	41,788	97.16%



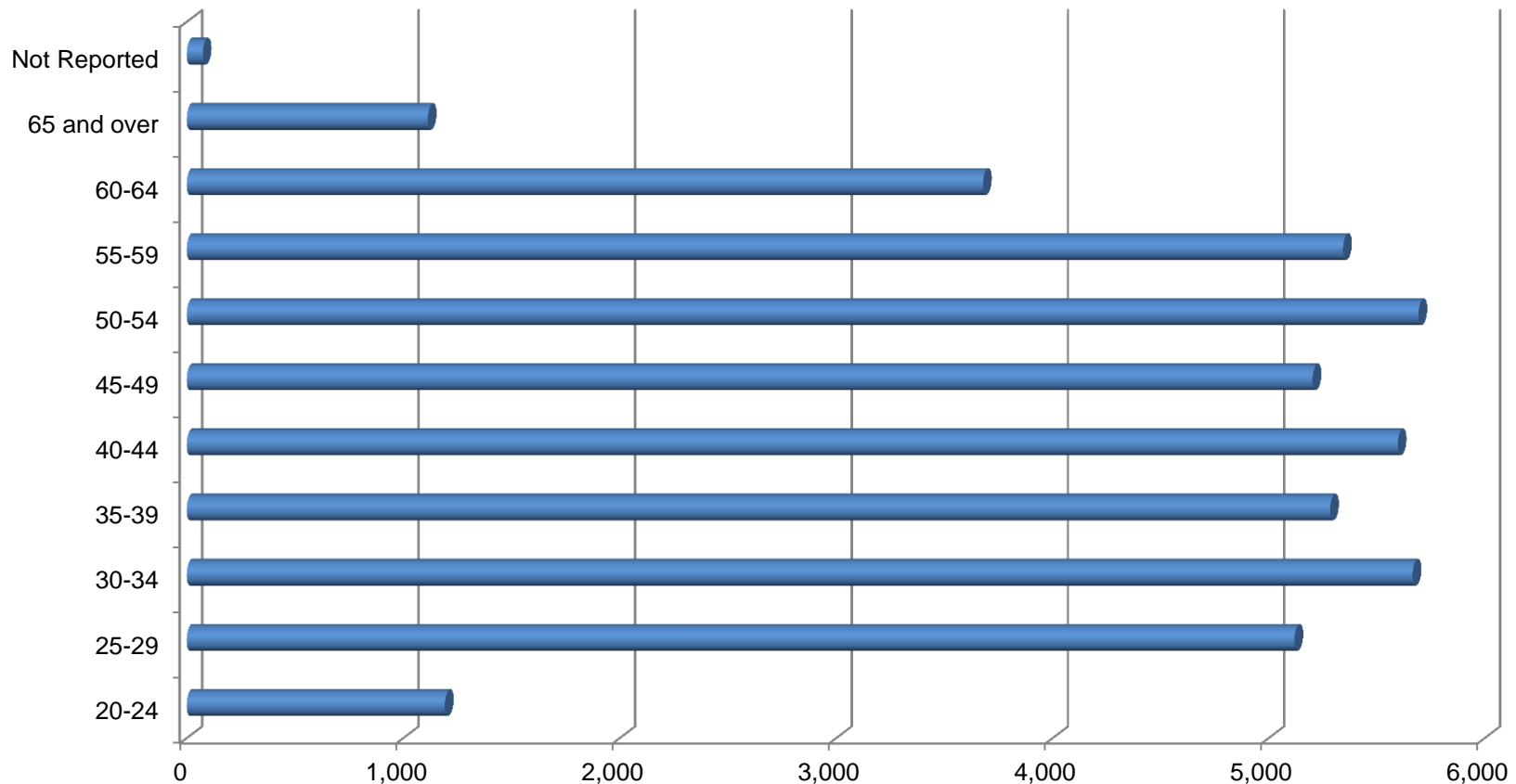
2012-13 Licensed Personnel Report

Licensed Personnel – Age Grouping:

Age Group	2011-12		2012-13	
	Number	Percent	Number	Percent
20-24	985	2.27%	1,193	2.71%
25-29	4,875	11.26%	5,120	11.64%
30-34	5,425	12.53%	5,667	12.89%
35-39	5,104	11.79%	5,285	12.02%
40-44	5,454	12.59%	5,598	12.73%
45-49	5,283	12.20%	5,204	11.83%
50-54	5,767	13.32%	5,694	12.95%
55-59	5,494	12.69%	5,345	12.16%
60-64	3,493	8.07%	3,679	8.37%
65 and over	858	1.98%	1,114	2.53%
Not Reported	571	1.32%	74	0.17%

2012-2013 Licensed Personnel Report

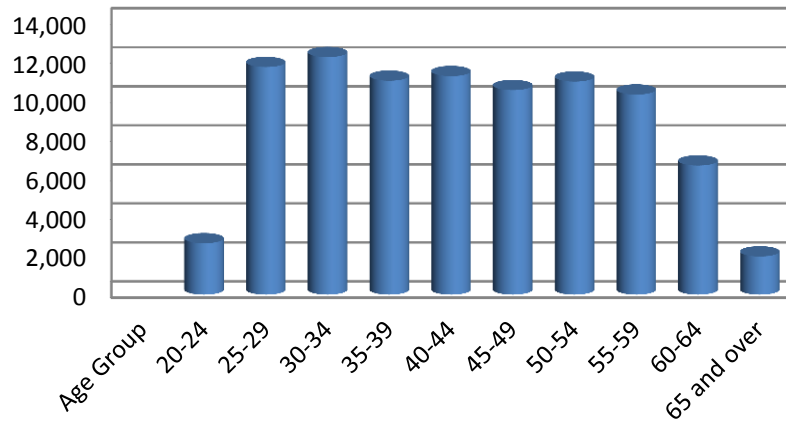
Licensed Personnel – Age Grouping



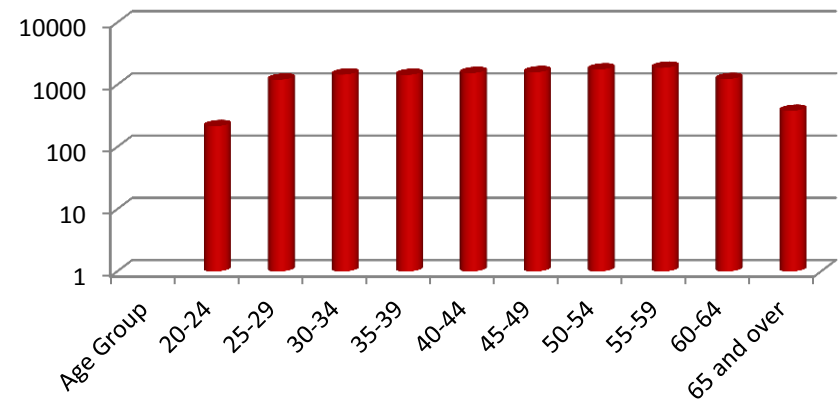
2012-13 Licensed Personnel Report

Licensed Personnel – Age Grouping by Educator Type:

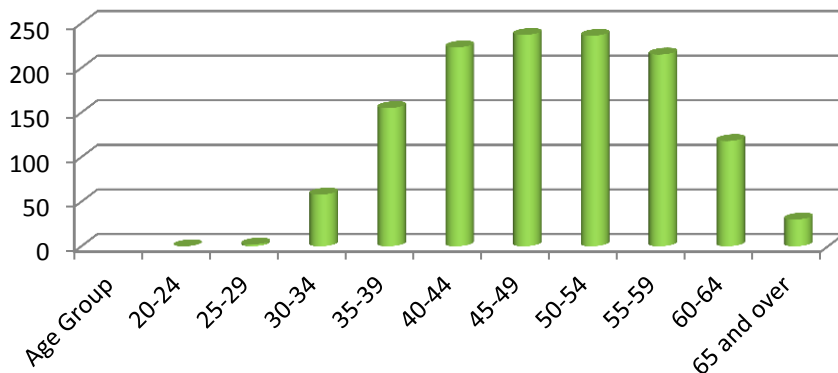
Teachers



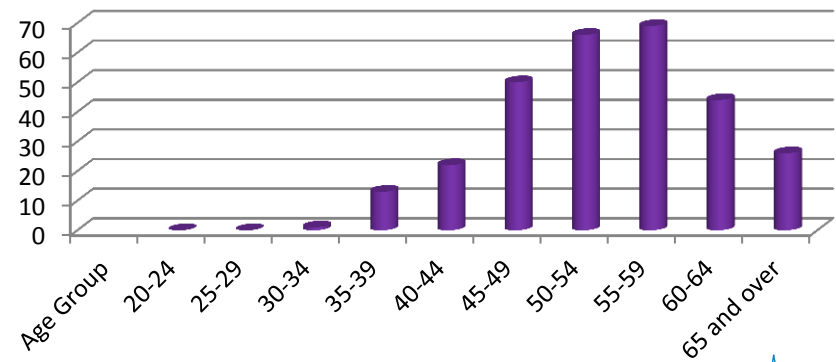
Special Educators



Principals



Superintendents



2012-13 Licensed Personnel Report

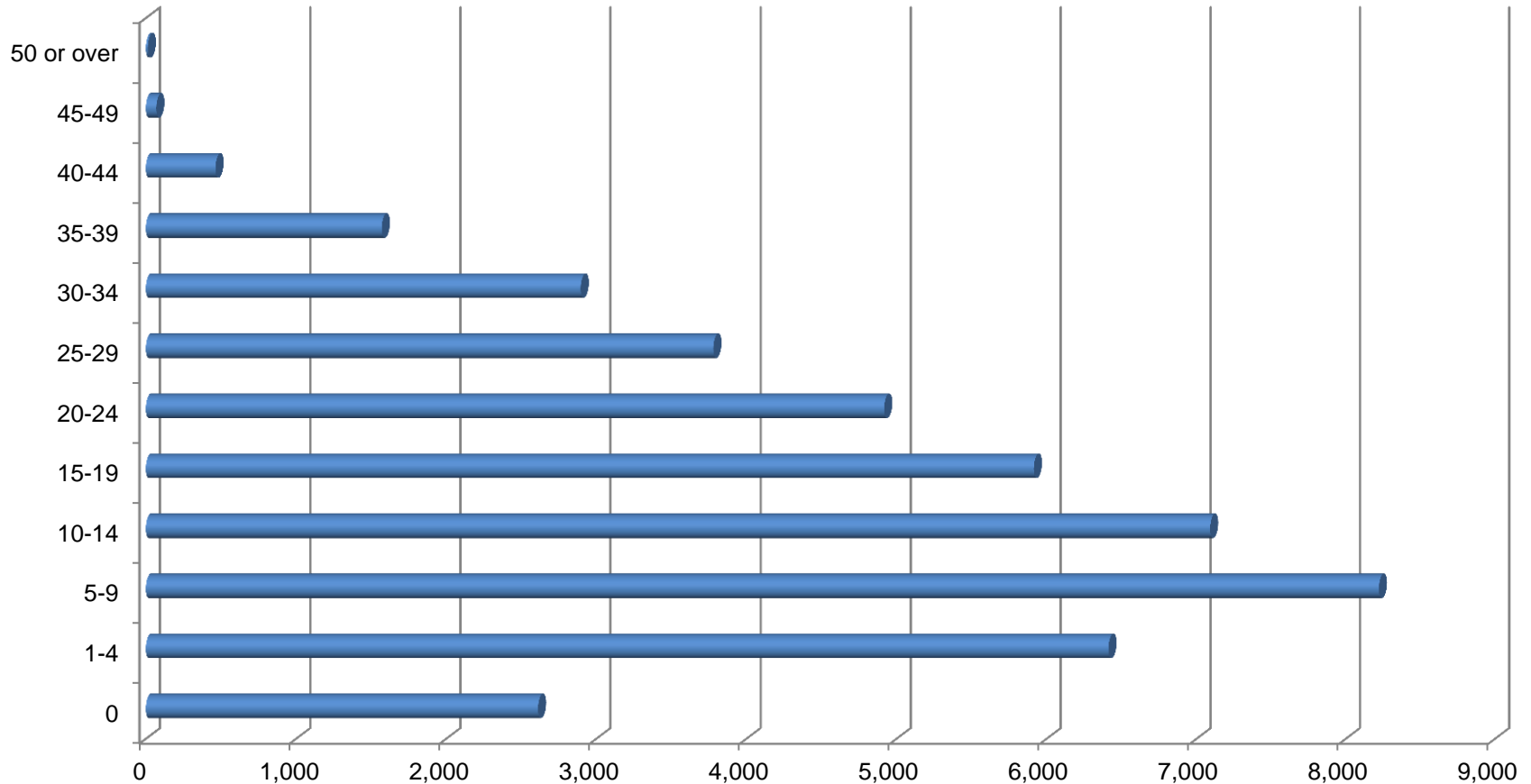
Licensed Personnel – Total Years of Experience:

Total Years of Experience	2011-12		2012-13	
	Number	Percent	Number	Percent
0	1,978	4.57%	2,613	5.94%
1-4	6,391	14.76%	6,413	14.58%
5-9	8,040	18.56%	8,223	18.70%
10-14	7,234	16.70%	7,092	16.13%
15-19	5,870	13.55%	5,916	13.45%
20-24	4,845	11.19%	4,919	11.19%
25-29	3,813	8.80%	3,781	8.60%
30-34	3,091	7.14%	2,897	6.59%
35-39	1,573	3.63%	1,572	3.57%
40-44	395	0.91%	464	1.06%
45-49	66	0.15%	70	0.16%
50 or over	12	0.03%	13	0.03%



2012-2013 Licensed Personnel Report

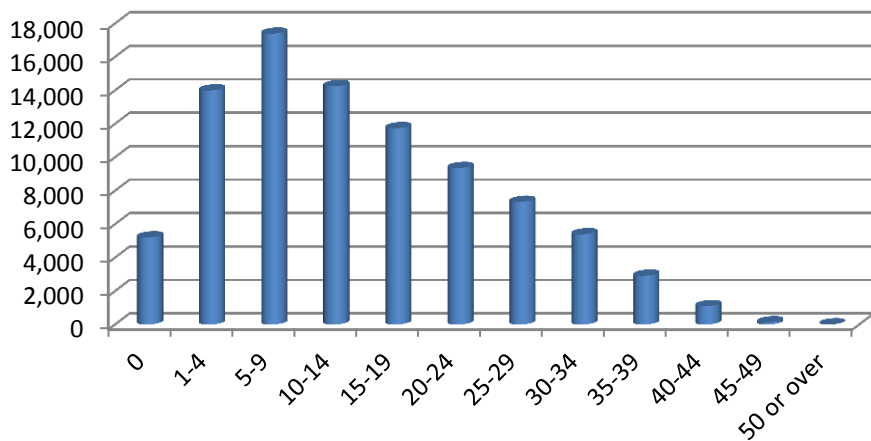
Licensed Personnel – Total Years of Experience



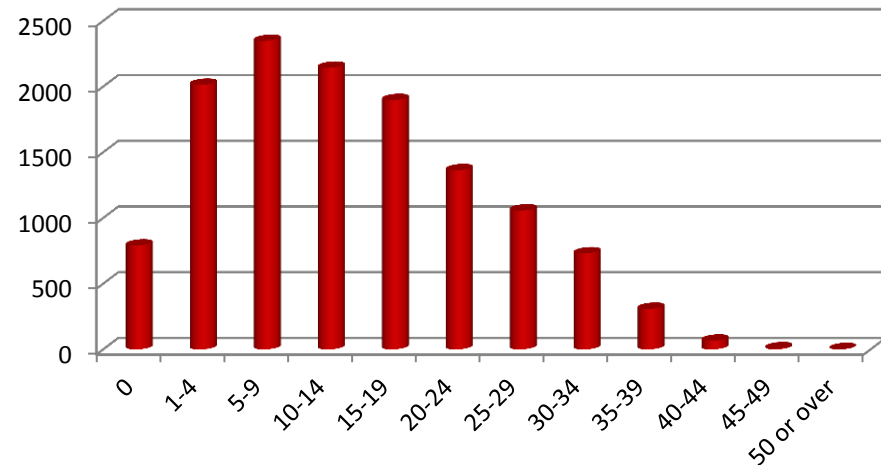
2012-2013 Licensed Personnel Report

Licensed Personnel – Total Years of Experience by Educator Type

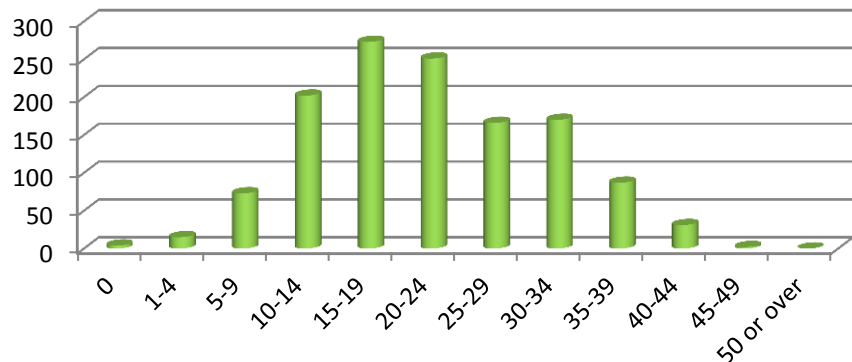
Teachers



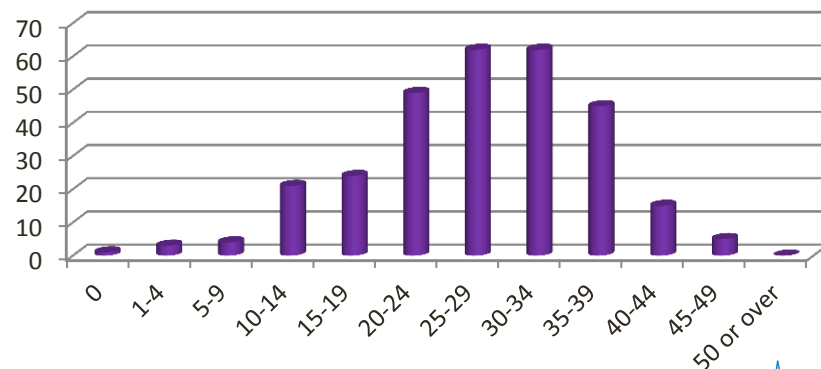
Special Educators



Principals



Superintendents



2012-2013 Licensed Personnel Report

Exit Reason by Educator Type

Exit Reason	Teachers	Special Educators	Principals	Superintendents
Academic Study	76	2	2	0
Accepted Administrative Position	108	2	10	2
Deceased	42	8	0	0
Health	59	2	4	0
Moved to another Kansas USD	2102	267	70	11
Leave of Absence	112	13	1	1
Left Profession	669	42	17	3
Military	12	1	0	0
Moved from Area	636	112	17	6
Out of State	413	41	9	3
Private School	56	3	0	0
Reduction in Force	83	4	6	0
Retirement	2084	245	80	24
Termination	580	85	13	11
Unknown	1144	253	36	7



2012-2013 Licensed Personnel Report

Kansas Exit Data – Teacher Only

Exit Reason	2009-2010	2010-2011	2011-2012	2012-13
Deceased	29	39	28	42
Left Profession	356	416	491	669
Military	48	8	11	12
Out of State	291	331	399	413
Reduction in Force	260	350	118	83
Retirement	1,028	1,508	1,260	2,084
Termination	375	677	577	580

2012-2013 Licensed Personnel Report

New Teacher Retention

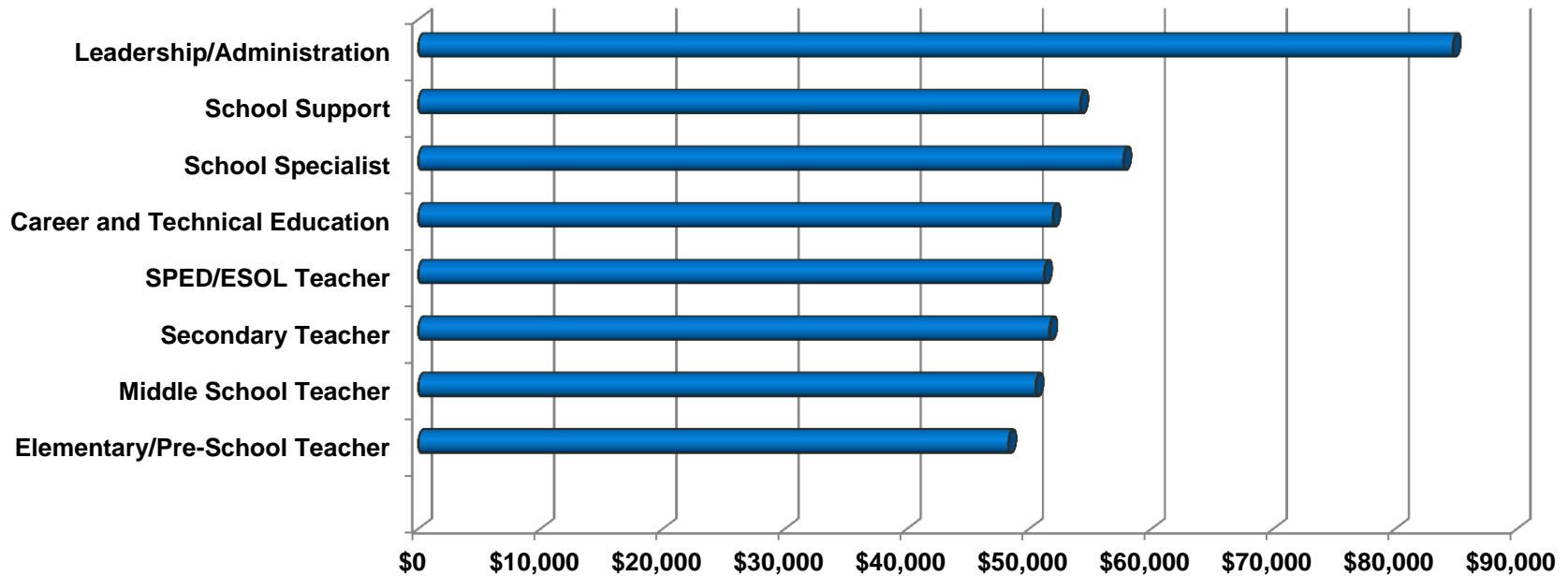
School Year	Number Issued	2008-2009		2009-2010		2010-2011		2011-2012		2012-13	
		Employed Yes	Retention Rate	Employed Yes	Retention Rate	Employed Yes	Retention Rate	Employed Yes	Retention Rate	Employed Yes	Retention Rate
2008-2009	1,700	1,700	100.00%	1,679	98.76%	1,509	88.59%	1,354	79.65%	1,255	73.82%
2009-2010	1,196			1,196	100.00%	1,175	98.24%	1,082	90.47%	1,013	84.70%
2010-2011	1,422					1,422	100.00%	1,410	99.16%	1,330	93.35%
2011-2012	1,621							1,621	100.00%	1,623	100.12%
2012-2013	1,858									1,858	100.00%

Data compiled from 2009 – 2013 entrance codes “New Teacher from Kansas College” and “New Teacher from Out-of-State College.”

2012-2013 Licensed Personnel Report

Average Salary by Educator Type

2012-13 Average Salary



Salary by total years experience: Beginning educators make an average salary of \$35,835.

2012-2013 Licensed Personnel Report

Licensure Qualification by Assignments

Subject Category	Full Licensure		Licensed Unqualified		Provisionally Licensed	
	Number	Percent	Number	Percent	Number	Percent
English Language Arts	9,064	83.22%	958	8.80%	2	0.02%
ESL/Bilingual	547	93.50%	14	2.39%	0	0.00%
History / Government	6,152	84.45%	619	8.50%	3	0.04%
Mathematics	8,617	85.48%	731	7.25%	0	0.00%
Science	5,654	84.63%	690	10.33%	2	0.03%
Elementary	26,1452	96.94%	300	1.11%	1	0.00%

Explanation of terms:

Fully Licensed – the staff member has full licensure in the area of assignment

Licensed Unqualified – the staff member is licensed as a teacher in Kansas, but does not hold an endorsement for the area of assignment

Provisionally Licensed – the staff member is licensed as a teacher in Kansas, and holds a provisional endorsement license for the area of assignment

2012-2013 Licensed Personnel Report

Not Licensed Teachers

Expired			Never Licensed			
142			46			
Renewal in process prior to expiration – no gap	Was expired and now renewed – gap in license	Currently expired (as of 8-5-13)	Incorrect SSN reported	Application status in system	No application record	Now licensed
57	27	58	6	7	27	6

2012-2013 Licensed Personnel Report

Highly Qualified Classes by Elementary Building Socioeconomic Status

	Elementary								
	All Elementary Buildings			High Poverty Buildings			Low Poverty Buildings		
Assignment Categories	Number of Classes	HQ Classes	% HQ	Number of Classes	HQ Classes	% HQ	Number of Classes	HQ Classes	% HQ
Elementary	11,317	11,090	97.99%	3,597	3,554	98.80%	2,610	2,552	97.77%
English Language Arts	8,678	8,492	97.85%	2,1966	2,172	98.90%	2,011	1,978	98.35%
Fine Arts	5,627	5,380	95.61%	1,879	1,805	96.06%	1,018	1000	98.23%
History & Government	3,429	3,370	98.27%	876	867	98.97%	868	854	98.38%
Mathematics	4,865	4,731	97.24%	1,355	1,342	99.04%	1,173	1,151	98.12%
Science	3,509	3,428	97.69%	948	919	96.94%	814	798	98.03%
World Languages	302	167	55.29%	270	135	50.00%	7	7	100.00%

Highly Qualified Classes by Secondary Building Socioeconomic Status

	Secondary								
	All Secondary Buildings			High Poverty Buildings			Low Poverty Buildings		
Assignment Categories	Number of Classes	HQ Classes	% HQ	Number of Classes	HQ Classes	% HQ	Number of Classes	HQ Classes	% HQ
Elementary	225	161	71.55%	6	6	100.00%	108	97	89.81%
English Language Arts	23,288	20,712	88.93%	6,470	5,969	92.25%	6,270	5,469	87.22%
Fine Arts	13,137	12,378	94.22%	4,472	4,287	95.86%	2,922	2,662	91.10%
History & Government	15,790	14,332	90.76%	4,766	4,312	90.47%	3,975	3,512	88.35%
Mathematics	20,067	18,167	90.53%	5,704	5,385	94.40%	5,721	5,003	87.44%
Science	15,384	13,912	90.43%	4,721	4,407	93.34%	3,843	3,410	88.73%
World Languages	5,370	5,042	93.89%	2,247	2,143	95.37%	1,012	913	90.21%

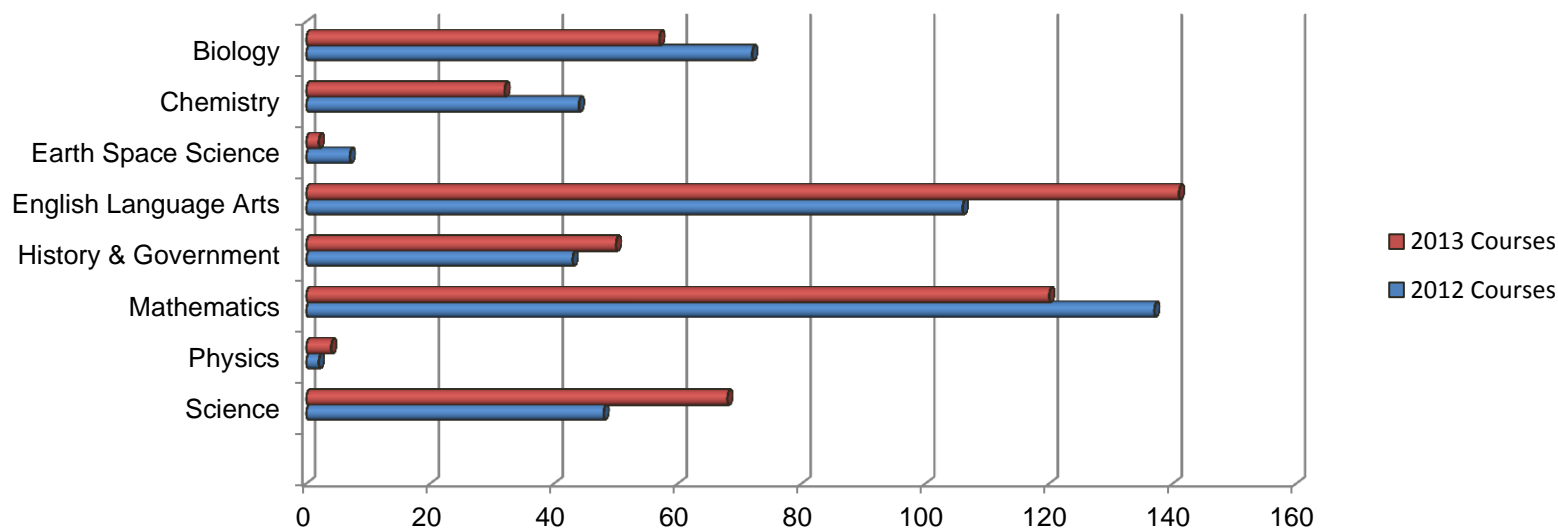


2012-2013 Licensed Personnel Report

Restricted License Teachers by Recommending Institution

Recommending Institution	2010	2011	2012	2013
Baker University	37	17	16	11
Emporia State University	22	19	12	31
Fort Hays State University	165	76	71	89
MidAmerica Nazarene University	6	0	0	0
Pittsburg State University	62	44	22	12
Southwestern College	15	11	9	7
Sterling College	1	0	0	0
Washburn University	6	0	0	0
Wichita State University	55	39	33	29

Restricted License Teachers by Assignment Area



2012-2013 Licensed Personnel Report

Licensure Waivers Issued By Subject Area

Subject	Waivers Issued
Adaptive Special Education	372
Deaf or Hard-of-Hearing	2
Early Childhood Unified	43
English to Speakers of Other Languages	10
Family and Consumer Science	1
Functional Special Education	24
Gifted	28
Social Studies	1
Journalism	2
Latin	1
Library Media	8
Mathematics	3
Middle Level Science	1
Speech/Theatre	1
Visually Impaired	3
Extension # days	10

2012-2013 Licensed Personnel Report

Type and Totals of Licenses Issued by Teacher Education and Licensure

Type of License	2007-2008	2008-2009	2009-2010	2010-2011	2011-2012	2012-13
Total Licenses Issued	23,467	25,187	19,875	20,477	19,307	20,874
License Renewals	10,261	11,065	9,130	8,742	9,502	9,204
Initial Standard/Kansas Graduate	1,923	1,870	1,686	1,883	1,894	1,984
Initial Standard/Out of State Graduate	977	951	816	751	651	811
One Year Nonrenewable	354	348	288	276	298	275
Two Year Exchange	247	181	167	156	131	156
Interim Alternative	n/a	40	38	52	48	67
Transitional	n/a	116	128	121	75	65
Standard Substitute	920	878	796	714	751	737
Emergency Substitute	7,708	8,560	5,095	5,844	4,083	5,657

* Each column of data represents dates from July 1 – June 30 of the respective year.