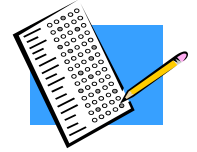




KANSAS ALTERNATE ASSESSMENT (KAA) & KANSAS ASSESSMENT OF MODIFIED MEASURES (KAMM) FACT SHEET 2009-2010



General Information about the Alternate Assessment

- Student participation in the Alternate Assessment is determined by the student's IEP team.
- The Kansas Alternate Assessment is administered annually.
- The Reading and Math Alternate Assessment is administered in grades 3-8, and once in high school.
- The Alternate Assessment for Science is administered in grades 4, 7, and once in high school.
- The results for the Reading and Math Assessments are used to calculate AYP.
- All indicators must be picked by December 30, 2009.
- Students new to a district after December 30, 2009 will not be assessed

Alternate Assessment Extended Standards

- *New revised extended standards in Reading, Math, and Science need to be used for the 2009-2010 school year.*
- Chapter 1 lists the extended indicators aligned with the general indicator being assessed at each grade level in each content area.
- Important Note: **All indicators are open to all students this year because of the new reviewed extended standards.**
- Extended standards are available at <http://www.ksde.org>

Assessment Format

- The assessment includes:
 - five extended indicators from Reading at the grade level in which the student is enrolled (one each of 2 standards and three at large);
 - five extended indicators from Math at the grade level in which the student is enrolled (one each of 4 standards and one at large);
 - **five extended indicators from Science at the grade level in which the student is enrolled one indicator from the first four standards and the last indicator from any standard.**
 - No indicators can be chosen this year from writing and history-government.
- Data are collected during the testing window.
- The Scoring Rubric is used for scoring the Alternate Assessment.
- Local scoring will be conducted by three scorers; one of the scorers must include the special education teacher.
- By Dec 1, 2009, sign off by a special or general education administrator will need to take place to verify the following in order to meet the Dec 30, 2009 deadline:
 - Indicators must be aligned to the activities chosen.
 - No functional activities can be used for the KAA.
 - Assessable activities need to be used for the KAA; opinions are not appropriate assessable activities.
- Administrator must sign off to assure that score can be entered.
 - Scorers should not enter scores on CETE
 - Scores are confidential and are sent to the recorder individually

- Scores are only given to evidence provided, if no evidence in the portfolio then the piece of evidence receives a "0"

Required Forms

- Required forms can be found at <http://www.cete.us>
- The **New** revised CETE evidence label must be used this year.

IEP Contents

- Students who take the Alternate Assessment in any content area must have IEP benchmarks or short-term objectives.
- The indicators chosen for the Alternate Assessment may be listed on the student's IEP.

Scores Reported

- Student performance levels are reported to schools and parents.
- Actual scores are reported in the building level results at the indicator level.
- One percent of the scores are counted as "Meets Standard" or above for the district and state AYP reports.
- All scores must be entered by May 1, 2009.

Performance Levels

- There are five levels: Exemplary, Exceeds Standard, Meets Standard, Approaches Standard, and Academic Warning. Cut scores are available at <http://www.ksde.org>

Testing Window

- The proposed testing window dates are at <http://www.ksde.org>

Recently Arrived Students

- Students taking the Alternate Assessment who enroll in a different school after January 5 are exempt.
- *Indicators cannot be registered after December 31, 2009.*

General Information about Kansas Assessment of Modified Measures (KAMM)

For any content area assessed using the KAMM, the student's IEP goals **MUST** be based on grade level content standards.

- The KAMM testing window is the same as the general education testing window.
- Only 2% of KAMM scores are counted as "Meets Standard" or above for district and state AYP reports.
- KAMM is based on grade level indicators.
- KCA is required for the KAMM. A paper and pencil version is available **ONLY** as an accommodation.

Accommodations

- The accommodations are used for classroom instruction and classroom testing.
- *The Accommodations Manual* is available at <http://www.ksde.org>

Contacts

- Debbie Matthews, Special Education Assessment Consultant, dmatthews@ksde.org, 785.296.0916