

A stylized gold figure, possibly representing a person or a letter 'K', is positioned on the left side of the slide. The figure is holding a star with multiple points. The figure is composed of several curved, overlapping shapes that create a sense of movement and depth.

Kansans **CAN**

KSDE Updates to the Kansas Special Education Advisory Council

September 20, 2016

Upcoming conferences/workshops

- KSDE Annual Conference
October 24-26
Wichita, Kansas
- Tri – State Law Conference
November 3-4
Omaha, Nebraska

**You may register by going to KSDE and TASN websites;
Submit required receipts for reimbursement to Pat Bone after
the conference is held**



KANSANS CAN

Kansas State Department of Education

2016 ANNUAL CONFERENCE

OCT. 24 - 26



**Come join us for the 2016 Annual
Tri-State Regional Special Education Law Conference!**

This conference is designed for general and special education administrators and teachers, service providers, parents, advocates, lawyers and others involved in developing and supporting special education services for children with disabilities and their families.

Registration

<https://www.cvent.com/events/2016-tri-state-regional-special-education-law-conference/registration-7c9f4a52e78448d2801f80120df3e949.aspx>

When

Thursday, November 3, 2016 - Friday, November 4, 2016

Where

The CenturyLink Convention Center
455 North 10th Street, Omaha, Nebraska 68102

More Information

<http://www.cvent.com/events/2016-tri-state-regional-special-education-law-conference/event-summary-7c9f4a52e78448d2801f80120df3e949.aspx>



Kansas Education Systems Accreditation

Up to date information on Accreditation will be found here:

<http://www.ksde.org/Agency/Division-of-Learning-Services/Teacher-Licensure-and-Accreditation/K-12-Accreditation-Home/KESA>

OSEP Updates/Dear Colleague Letters etc...

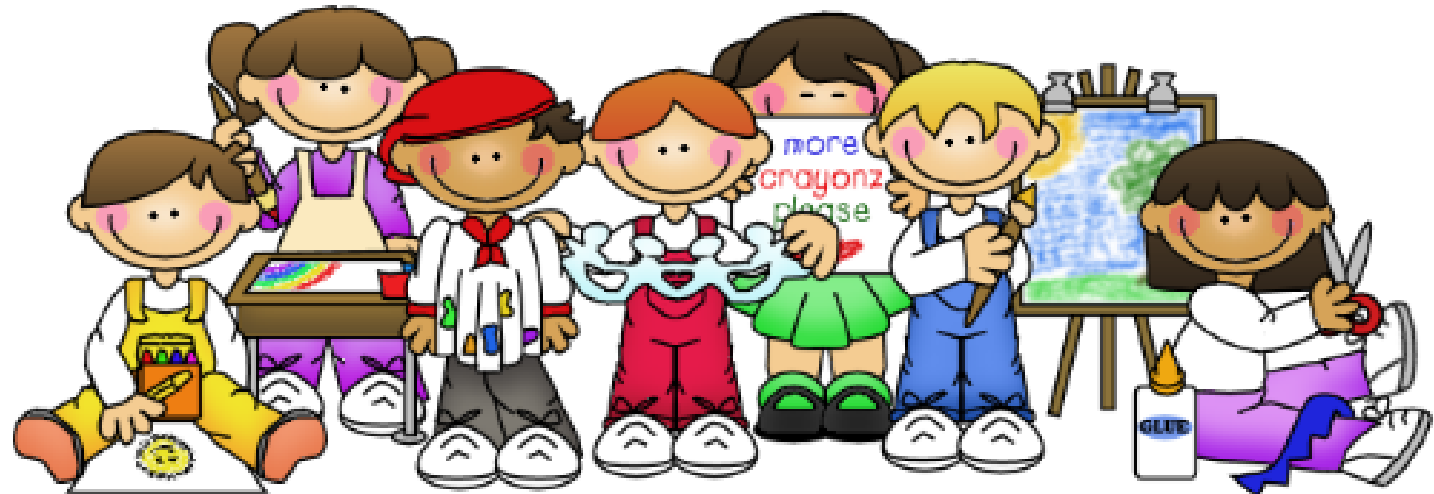
Since our last SEAC meeting in July, Ruth Ryder, Acting Director of OSEP has issued the following Dear Colleague Letters (DCL) or memos:

- US Departments of Education and Justice jointly released Resources for School Safety and Appropriate Use of School Resource Officers
- OSERS released guidance on Providing Behavioral Supports for Students with Disabilities
- OSERS released guidance on children with disabilities in virtual schools
- King letter regarding Zika in schools



Kansans **CAN**

Kindergarten Readiness in Kansas



The State Board's Vision



Kindergarten readiness is an important building block for a student's future achievement and success

Data will support data-driven decision making by schools, districts and state policy makers

Consider targeted ways to increase kindergarten readiness

Kansas' Current Landscape in Getting Kids Ready for Kindergarten

Programs:

- 4 Year-Old At Risk, Kansas Preschool Program, Parents as Teachers, Early Childhood Special Education

Cross Agency Work:

- Children's Cabinet and Trust Fund, Department of Children and Families, Department of Health and Environment

Kindergarten Readiness Workgroup



Monica Blosser, Early Childhood Director, Children's Cabinet and Trust Fund

***Barbara Dayal**, Preschool and Special Education, KSDE

Julie Ewing, English Learners & Title III, KSDE

Emily Fleming, KCK ECC Assistant Principal, KCK Public Schools

Beth Fultz, Career Standards and Assessments, KSDE

Tracie Kalic, Migrant Education GOSOSY Director

Kim Kennedy, Head Start Collaboration Office, DCF

Barbara Kramer, Part C Program Analyst, KDHE

Richard Matteson, Requirements Analyst, KSDE

Shawna McAllister, Kindergarten Teacher, Canton-Galva Elementary

Tammy Mitchell, Kindergarten Readiness & School Improvement, KSDE

Monica Murnan, Director of Student Support Services, Greenbush

Tony Moss, Research and Evaluation, KSDE

Chelie Nelson, Kansas MTSS

***Janet Newton**, Parents as Teachers, KSDE

***Vera Stroup-Rentier**, Early Childhood, Special Education, and Title, KSDE, Chair

Kansas' Current Landscape

Getting Children Ready for Kindergarten

Where are the four-year-olds?



- ✓ Kansas Preschool Program
- ✓ State Pre-K
- ✓ Kansas Parents as Teachers
- ✓ Head Start Programs
- ✓ Child Development Centers
- ✓ Faith-Based Preschools
- ✓ Early Childhood Special Education Programs
- ✓ Child Care Providers
- ✓ At Home

Questions Considered



- What are districts currently using?
- What are other states using?
- Do we want to build our own?
- What information do we want to collect?

Key Ideas: Kindergarten Readiness

Measuring kindergarten readiness provides a snapshot of where children are upon entry to kindergarten.

Kindergarten readiness screening will include communication (language & literacy), problem solving, motor, and social emotional areas of development.

Families and caregivers will be engaged in gathering information about their child's development and early childhood experiences prior to kindergarten.

A Kindergarten Readiness Screener

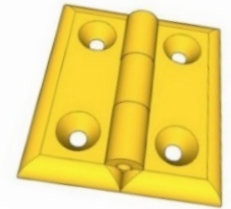


A Hinge – Not a Gate

- Swings back to inform regarding prior experiences
- Swings forward to inform effective classroom practices

Informs districts regarding their communities capacity for early childhood

Not a gate keeper to “screen” five year olds out of Kindergarten



A Screener is Not a Test

Screening Tool	Assessment/Test
Looks at developmental milestones	Looks at skills acquired
Provides a snapshot	Is more comprehensive
Brief to administer	Administration can be lengthy
Largely observational in nature	Requires individual testing

Ages and Stages Questionnaires



ASQ-3
Ages & Stages
Questionnaires[®]
THIRD EDITION

Ages & Stages Questionnaires, Third Edition (ASQ-3™)
A Parent-Completed Child Monitoring System
By Jane Squires, Ph.D., & Diane Bricker, Ph.D.

**ASQ-3™
AT A GLANCE**

Type of screening	Developmental screening
Areas screened	Communication, Gross Motor, Fine Motor, Problem Solving, and Personal-Social
Age range	1-66 months

ASQ-3
Ages & Stages
Questionnaires[®]
THIRD EDITION

ASQ-3 User's Guide

Jane Squires, Ph.D.,
Diane Bricker, Ph.D.,
& Lorraine Potter

Considerations



- Used during regular home and/or classroom activities
- Based on families'/teachers' observations of children's skills and abilities
- Addresses communication, motor, problem solving, personal and social-emotional skills
- Aligns with tools already used in early childhood settings



Fall 2016 Pilot Participants



Prairie Hills
Cherokee
Southern Lyon County
Emporia
Humboldt
Derby
Maize
Plainville
Elk Valley
Lincoln
Salina
Nickerson
Hoisington
Dodge City
Winfield
Geary County
Hays
Chetopa/St. Paul
Satanta

Buhler
McLouth
Seaman
Goodland
Chaparral Schools
Prairie View
Holcomb
Atchison County
Vermillion
Ellis
Eureka
Peabody-Burns
Atchison
McPherson
Canton-Galva
Valley Heights
Kansas City
Topeka
South Haven

Fall 2016 Pilot

June 2016	Participants in the fall 2016 pilot will be determined
August 2016	Small team Trainer of Trainers receive official training
September 2016	Every Kindergarten teacher involved in pilot will be trained by the training team
September – December 2016	ASQ-3 and ASQ:SE-2 will be piloted in various districts and schools across Kansas
Winter 2017	Pilot cohort will provide feedback to KSDE to help inform planning of a state-wide roll out of a Kindergarten Readiness screening tool RFP process for state-wide screening tool Develop training plan
*Spring/Summer/Fall 2017	Implement training plan
*Fall 2017	State-wide data collection begins
*Fall 2017	Approximately 37,000 Kindergarten children, their families, and teachers will collect information using the approved screening tool

Beyond the Pilot

Spring 2017

- Survey and meet with focus group of pilot participants to collect feedback and recommendations
- Put out an RFP for a Kindergarten Readiness screening tool
- Work with the approved vendor on a training plan
- Work with KSDE on a funding plan
- Begin state-wide data collection

Beyond the Pilot

Questions to address in the future:

- What does the data show regarding the readiness of children entering Kindergarten?
- What are the implications for communities and schools?
- What are the implications for distribution of resources?
- What are the implications for needed professional learning?

Questions?



Tammy Mitchell
tmitchell@ksde.org

Assistant Director
ECSETS



SEAC Website

All presentation and meeting materials will be posted at:

<http://www.ksde.org/Agency/Division-of-Learning-Services/Early-Childhood-Special-Education-and-Title-Services/Special-Education/Special-Education-Advisory-Council>





Kansas leads the world
in the success of each student.

Kansans
CAN

#KansansCan

KANSAS STATE DEPARTMENT OF EDUCATION www.ksde.org