

NAEP Data Explorer

WHAT IS THE NAEP DATA EXPLORER?

The NAEP Data Explorer (NDE) is a dynamic, interactive tool used to explore assessment results for various subjects, grades, and jurisdictions. It allows users to create custom statistical tables, graphics, and maps using NAEP data. Student performance in the context of gender, race/ethnicity, public or private school, teacher experience, and hundreds of other factors can be examined using data gathered from students, teachers, and schools that have participated in NAEP.

WHAT CAN I USE IT FOR?

The NDE is a powerful statistical tool that encompasses many analytical functions, such as sophisticated searching, data comparison, and chart and table creation. The NDE is easy to use, whether you are looking for single-year data or conducting a cross-tabulation. Get the data you want, how and when you want it.



How Do I Access the NDE?

- 1 You can access the NDE by visiting <http://nces.ed.gov/nationsreportcard/naepdata> or by clicking **Analyze Data** on the NAEP home page at <http://nces.ed.gov/nationsreportcard>.
- 2 Select the database you want and start exploring!
 - **Main NAEP** provides national results for various subject areas since 1990. State and selected urban district results are provided since 2002 in mathematics, reading, science, and writing.
 - **Long-Term Trend** provides national data on 9-, 13-, and 17-year-olds for reading since 1971 and mathematics since 1978.
 - **High School Transcript Study** provides national results for graduating seniors on NAEP assessments in science and reading. Results are also available for transcript data, such as courses taken and grade point average.

How Do I Use It?

There are four sections for each version of the NDE, which allow you to narrow your results and build customized reports.

1 Select Criteria

- Choose criteria for analysis, such as subject, grade, year, measure, jurisdiction, and in certain cases, framework.

2 Select Variables

- Choose variables in the areas of major reporting groups; instructional content and practice; and student, teacher, and community factors.

TIP: You can also search for variables using keywords.

3 Edit Reports

- Give the report a title, select various format and statistical options, and custom design the layout.

4 Build Reports

- Preview data tables.
- Create a chart or run a significance test or gap analysis on your results.

The flexible options of the NDE allow you to query the data in numerous ways. Below are some frequently run searches to help you get started.

Obtaining Average Scores for Race/Ethnicity

You can easily create a table to view state-level, subject-specific results for any variable. The example below will show you how to obtain a table with the average score for each user-selected ethnicity in California.

1 Select Criteria

- Under subject, select **Mathematics**.
- Under grade, select **Grade 8**.
- Under year, select **2007**.
- Under groups, expand the state options by clicking on the arrow next to the word **State**.
- Under jurisdiction, select **California**.

TIP: If data are not available for a specific year, the words "no data" will appear.

3 Edit Reports

- Click on **Edit** next to the report to give it a title, select various format and statistical options, and custom design the layout.

TIP: **Edit** is located next to the report name in the **Edit Reports** tab.

2 Select Variables

- Under student factors, select **Race/ethnicity**.

4 Build Reports

- Preview data table.
- Create a chart or run a significance test.

| Year | Jurisdiction | Average scale score | Standard error | Average scale score | Standard error | Average scale score | Standard error | Average scale score | Standard error | Average scale score | Standard error |
|------|--------------|---------------------|----------------|---------------------|----------------|---------------------|----------------|---------------------|----------------|---------------------|----------------|
| 2007 | California | 287 | (1.3) | 253 | (2.1) | 256 | (0.9) | 299 | (2.1) | 263 | (4.0) |

Creating a State Map Showing Significant Differences Between Jurisdictions

In the **Build Reports** screen, click **Significance Test** and select the type of comparison to make—between jurisdictions, within variables, or across years. Available comparisons depend on the data you chose in the original table.

Under the **Significance Test** section, select whether you want to view your test results as a table or map.

From here, you must select the criteria and variables you want to use in your significance test from those you previously selected in step 2 (**Select Variables**).

Click **Done** to load your significance test map.

TIP: The **Significance Test** option is available if you are working with 2 or more variables and multiple years or jurisdictions. It will appear under the **Build Reports** tab.



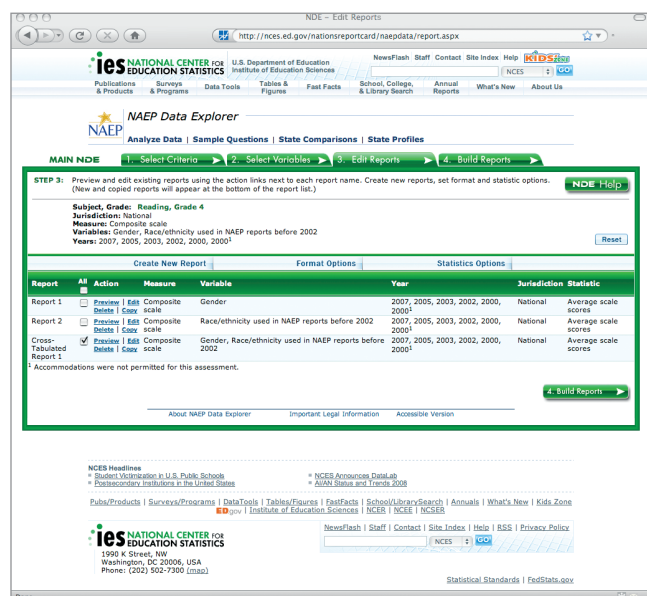
TIP: A map of all states will only be fully populated when you select all jurisdictions and specify a **Between Jurisdictions** test.

Running a Cross-Tabulation

When you select two or three variables, the NDE creates a **Cross-Tabulated Report**. The cross-tabulated report will appear as the last line in the **Edit Reports** tab.

To view a cross-tabulation of NAEP results, click only on the box to the left of the cross-tabulated report, and then click **Build Reports**.

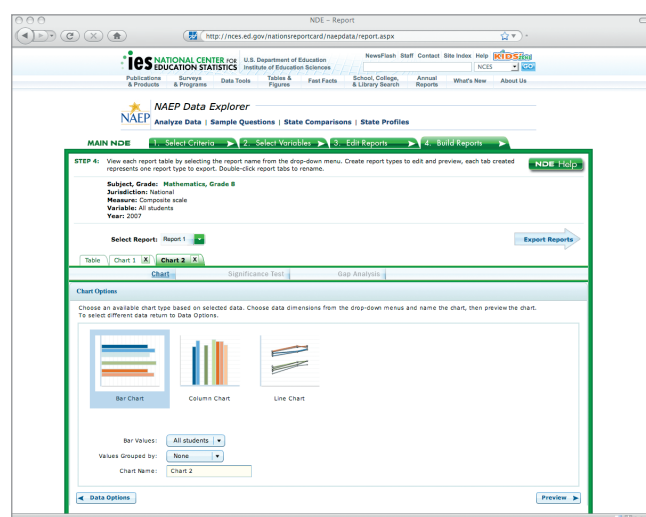
Charts, significance tests, and gap analyses may also be generated using these data.



Creating a Chart

Once you have selected your criteria and variables, you are ready to view your results. From the **Build Reports** tab, you can begin to customize how you will view your data.

- 1 Click **Chart**.
- 2 Select a single statistic and any combination of jurisdictions and years.
- 3 Click **Chart Options**.
- 4 Click on the graphic of the type of chart you want, and then you may choose to adjust the values and their grouping.



Comparing Jurisdictions

The NDE allows you to compare results among the nation, states, districts, territories, and regions. For example, to compare the performance of 4th graders in California and Texas on the reading assessment since 2000:

1 Select Criteria

- Under subject, select **Reading**.
- Under grade, select **Grade 4**.
- Select all years since 2000.
- Under groups, expand the state options by clicking on the arrow next to the word **State**.
- Under jurisdiction, select **California** and **Texas**.

2 Select Variables

- Under student factors, select **All Students**.

3 Edit Reports

- Click on **Edit** next to the report to give it a title, select various format and statistical options, and custom design the layout.

4 Build Reports

- Preview data table.
- Create a chart, run a significance test, or gap analysis.

Evaluating Trends Over Time

You can use the NDE to look at trends over time. For example, to see how 8th graders have performed in algebra since 2000:

1 Select Criteria

- Under subject, select **Mathematics**.
- Under grade, select **Grade 8**.
- Under measure, select **Algebra and functions scale**.
- Select all years since 2000.
- Under jurisdiction, select **National**.

2 Select Variables

- Here, you can select variables such as gender or race/ethnicity if you want to see how a specific group of 8th graders performed.

3 Edit Reports

- Select only the cross-tabulated report by de-selecting the check boxes next to all other reports listed.
- Click on **Edit** next to the report to give it a title, select various format and statistical options, and custom design the layout.

4 Build Reports

- Preview data table.
- Create a chart or run a significance test.

Background Variables and Student Achievement

The NDE can also help you examine possible relationships between variables and student performance. For example, see how the average national performance of male 8th graders on the NAEP mathematics assessment varies according to the number of advanced mathematics courses their teachers have taken:

1 Select Criteria

- Under subject, select **Mathematics**.
- Under grade level, select **Grade 8**.
- Select the years you wish to look at.
- Under jurisdiction, select **National**.

2 Select Variables

- Under student factors, select **Gender**.
- Under teacher factors (preparation, credentials, and experience), select the check box next to **Advanced Mathematics Courses**.

3 Edit Reports

- Select only the cross-tabulated report by de-selecting the check boxes next to all other reports listed.
- Click on **Edit** next to the report to give it a title, select various format and statistical options, and custom design the layout.

4 Build Reports

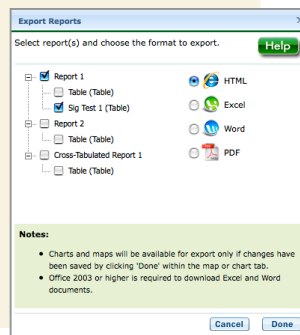
- Preview data table.
- Create a chart, significance test, or gap analysis.

Printing, Saving, and Exporting

To save your document, you must be in the **Build Reports** section of the NDE.

Once you have created your document, be sure to click **Done**. This will let the NDE know that you are satisfied with the data product.

- 1 Click on **Export Reports**.
- 2 To view and select only the parts of your report you want to save, click the **+** to the left of the report name.
 - Next, select or de-select the check box next to the specific part of the report you wish to export (chart, graph, report).
- 3 After you have made your selections, choose the format you want to export to: HTML, Excel, Word, or PDF.
- 4 Click **Done** to export your graphics into your selected format and to save to your computer.



Helpful Tips

- » **Be sure to click Done** when you are finished editing or working with a table, chart, or graphic to be able to save and export it.
- » **Always Export** your reports, tables, maps, and charts before leaving the **Build Reports** screen. They will not remain available if you choose new variables or edit the format.
- » **The option to conduct a gap analysis** will only be available when more than one year is selected under **Criteria**.
- » **When comparing states to the nation**, be sure to select **National Public** under jurisdiction.
- » **If you know what variable** you are looking for in **Step 2 - Select Variables**, you can use the search box, located above the years, to find it.
- » **A Help button** is available on all pages.

Technical Requirements for NDE

- NDE will work with Internet Explorer version 6.0 or higher. If using Firefox, version 2.0 or higher is also supported.
- JavaScript must be enabled and pop-ups must be allowed.
- NDE requires Flash version 9.0.115 or higher.
- When using the accessible NDE, Jaws version 8.0 or higher is recommended.
- Exports of files to Microsoft Office require Office 2003 or later.
- NDE is best viewed with a screen resolution of 1024 x 768.