

# February 11, 2022

## KSDE SETS Special Education Administrators' Webinar Agenda

Agenda Item	Presenter
Director Updates	<a href="#"><u>Bert Moore</u></a>
Early Childhood Updates	<a href="#"><u>Amanda Petersen, Julie Rand, Jordan Christian</u></a>
<a href="#"><u>TASN – Kansas Instructional Resource Center for the Visually Impaired</u></a>	<a href="#"><u>Toni Harrell</u></a>
<a href="#"><u>TASN – Teachers of Students Who Are Blind or Visually Impaired and Certified Orientation and Mobility Specialists Preparation and Mentorship</u></a>	<a href="#"><u>Kylie Kilmer</u></a>
<a href="#"><u>TASN – Autism and Tertiary Behavior Supports (ATBS)</u></a>	<a href="#"><u>Lee Stickle</u></a>
<a href="#"><u>Categorical Aid/Waiver Deadline Reminders</u></a>	<a href="#"><u>Evelyn Alden</u></a>
<a href="#"><u>DLM Updates</u></a>	<a href="#"><u>Cary Rogers</u></a>
<a href="#"><u>IDEA District Public and Expanded Reports Timely and Accurate Data Submission and Internal Controls Worksheet</u></a>	<a href="#"><u>Tim Berens</u></a>
<a href="#"><u>KIAS Calendar Reminders</u></a>	<a href="#"><u>Crystal Davis</u></a>
<a href="#"><u>KASEA Updates</u></a>	<a href="#"><u>Doug Anderson</u></a>





# SETS STATE DIRECTOR UPDATES

February 11, 2022

# What would you do?

- A parent comes to an IEP meeting with a list of items they want added to their child's IEP. No one on your team has heard these requests or seen this list before the IEP meeting. What would you do as the administrator?
- A) Proceed with the IEP meeting and add all items to the current IEP; or
- B) Ignore the list and try to convince the parent that your team has the best interest of the child in mind; or
- C) Review each request individually and let the IEP team decide what is in the best interest of the child.



# FAMILY ENGAGEMENT

- How family friendly is your agency (scale of 1-10 with 10 being the highest rating)? If you think your agency is below a 5, what can you do to promote better family engagement?
- How often do you begin IEP meetings with this question, “What do you consider to be your child’s strengths?” followed by “What do you think your child needs to be successful in school?”
- When do you ask parents what they see their child doing when they graduate from high school?
- How often does your staff communicate individual student progress with parents?
- Do you have a person on your staff that works with parents when the parent has voiced concerns about their child’s needs?



# Keep The Main Thing The Main Thing



2/18/2022

Kansas State Department of Education | [www.ksde.org](http://www.ksde.org) | #KansansCan

*Kansas leads the world in the success of each student.*



# Contact Information



Bert Moore  
SETS Director  
(785) 296-4949  
[bmoore@ksde.org](mailto:bmoore@ksde.org)

The Kansas State Department of Education does not discriminate on the basis of race, color, national origin, sex, disability or age in its programs and activities and provides equal access to the Boy Scouts and other designated youth groups. The following person has been designated to handle inquiries regarding the nondiscrimination policies: KSDE General Counsel, Office of General Counsel, KSDE, Landon State Office Building, 900 S.W. Jackson, Suite 102, Topeka, KS 66612, (785) 296-3201.



# Early Childhood Updates

Special Education Administrators' Webinar  
February 11, 2022



Early Childhood | Kansas State Department of Education | Landon State Office Building  
900 S.W. Jackson St., Suite 620, Topeka, KS 66612 | 785-296-6602 | [earlylearning@ksde.org](mailto:earlylearning@ksde.org)  
*Kansas leads the world in the success of each student.*

# KSDE Early Childhood Team Members

Jordan Christian <a href="mailto:jchristian@ksde.org">jchristian@ksde.org</a>	State Interagency Coordinating Council (SICC), Local Interagency Coordinating Councils (LICCs), IDEA Part C, Kansas Kindergarten Readiness Snapshot (ASQ)
Natalie McClane <a href="mailto:nmcclane@ksde.org">nmcclane@ksde.org</a>	Quality Preschool Programming, State Preschool Programs (Preschool-Aged At-Risk and Kansas Preschool Pilot), Transitions to Kindergarten
Amanda Petersen <a href="mailto:apetersen@ksde.org">apetersen@ksde.org</a>	<i>All In For Kansas Kids</i> Strategic Plan for early childhood, Early childhood programming finance
Julie Rand <a href="mailto:jrand@ksde.org">jrand@ksde.org</a>	Early Childhood Special Education, 619 Coordinator
Beccy Strohm <a href="mailto:bstrohm@ksde.org">bstrohm@ksde.org</a>	Administrative Specialist, Early Learning Listserv, Outcomes Part B Web System (OWS) Application Administration
<i>Now hiring</i>	Kansas Parent Education Programs (PAT), Home Visiting, Family Engagement and Partnership





# Stay Connected

- Join the Early Learning listserv (Email [bstrohm@ksde.org](mailto:bstrohm@ksde.org))
- Visit the KSDE Early Childhood webpage: [www.ksde.org](http://www.ksde.org), Early Childhood
  - Includes monthly Early Childhood Program Updates



# Kansans Can Star Recognition – Kindergarten Readiness

- Districts and accredited private school systems can begin applying for the 2022 Kansans Can Star Recognition program. 2022 applications will be due June 30, 2022.
- Handy links:
  - [KSDE Kansans Can Star Recognition webpage](#)
  - [Video Overview of Star Recognition: Kindergarten Readiness](#)
  - [Kindergarten Readiness Kansans Can Star Recognition Rubric](#)
  - [Kindergarten Readiness Suggested Artifacts](#)



# Purpose of Star Recognition

- Reflects the Kansas State Board of Education vision of a successful high school graduate
- Supports the KESA process by providing a measure aligned with system continuous improvement efforts
- Provides a level of recognition for the system based on progress made towards the State Board Outcomes
- Validates a rigorous, sustained and systemic commitment to addressing Kindergarten Readiness
- Recognizes communities that offer quality, inclusive opportunities to young children and their families.



# Kindergarten Readiness Qualifiers

- Is the school district compliant with the State Performance Plan Indicator 12: Transition from C to B?
- Does each school district receiving Title I funds develop agreements and carry out coordination with Head Start and, if feasible, with other early childhood programs serving children who will attend the schools of the local education agency?
- Are all preschool-aged students in classrooms with...
  - A maximum size of 20?
  - An adult-to-child ratio of 1:10 or better?
  - Evidence-based curricula aligned with the Kansas Early Learning Standards?
  - Teaching staff who meet the requirements of the Preschool-Aged At-Risk program?



# Kindergarten Readiness Qualifiers

- Does the district meet the State Performance Plan targets for Indicator 6: Preschool Environments for the 2021-2022 school year?
  - Julie Rand ([jrand@ksde.org](mailto:jrand@ksde.org)) can provide support.
- Are all families of children who are age-eligible for kindergarten (5 years old on or before Aug. 31) encouraged to enroll their children in kindergarten? Are all children welcomed – as they are – into heterogeneous kindergarten settings and not segregated into extra-year programs prior to or following regular kindergarten?
  - See the [Kindergarten Readiness Resources Fact Sheet](#).
- Do at least 50% of kindergarten students in each building that offers kindergarten participate in the Kindergarten Readiness Snapshot?



# Star Recognition Rubric Elements

- Community Partnerships (4 sub-elements)
- Quality, Evidence-Based Learning (3 sub-elements)
- Quality Workforce (3 sub-elements)
- Health and Safety (4 sub-elements)
- Inclusion and Accessibility (1 sub-element)
- Transitions into Kindergarten (2 sub-elements)



# Kindergarten Readiness Snapshot (ASQ)

- For the 2022-23 school year, districts/private school systems may submit a short survey to administer the ASQ to incoming kindergarteners (for the purposes of the Kindergarten Readiness Snapshot) beginning April 1, 2022.
  - For districts that do not submit this short survey, the Kindergarten Readiness Snapshot window will open July 1. All schools must administer the ASQ to incoming kindergarten students by Sept. 20 and all data (including pending Family Access screenings) must be entered into ASQ Online by Oct. 10, 2022.
- Visit [agesandstages.com/ks](https://agesandstages.com/ks) for Frequently Asked Questions, guides and “how-to” videos on implementing ASQ.



# 2022-2023 Preschool-Aged At-Risk

- 2022-2023 Preschool-Aged At-Risk Program Requirements and Assurances can be found on the [KSDE Preschool Programming webpage](#) along with the link to the [Preschool-Aged At-Risk Approval Form](#).
  - In districts operating approved programs, 3-and 4-year-old students who meet an at-risk criterion for the Preschool-Aged At-Risk program and who are enrolled and attending on Count Day will automatically count as a ½ student (0.5 FTE) in calculating a district's enrollment and accompanying weightings.
  - Preschool-Aged At-Risk Approval Forms must be completed by April 1, 2022 for the Kansas State Board of Education to consider them in May.
- This is a great time of year to evaluate whether changes in program design create opportunities to provide more inclusive programming. Contact Natalie McClane ([nmcclane@ksde.org](mailto:nmcclane@ksde.org)) with preschool questions or requests for KSDE to provide support.







*Thank you! Do you have any questions for us, or comments you'd like to share?*

# Contact Information



Amanda Petersen  
Director  
Early Childhood  
[apetersen@ksde.org](mailto:apetersen@ksde.org)

The Kansas State Department of Education does not discriminate on the basis of race, color, national origin, sex, disability or age in its programs and activities and provides equal access to the Boy Scouts and other designated youth groups. The following person has been designated to handle inquiries regarding the nondiscrimination policies: KSDE General Counsel, Office of General Counsel, KSDE, Landon State Office Building, 900 S.W. Jackson, Suite 102, Topeka, KS 66612, (785) 296-3201.



# Kansas Instructional Resource Center (KIRC)

For more information on KIRC

Visit: <https://www.ksdetasn.org/kirc>

## Contact

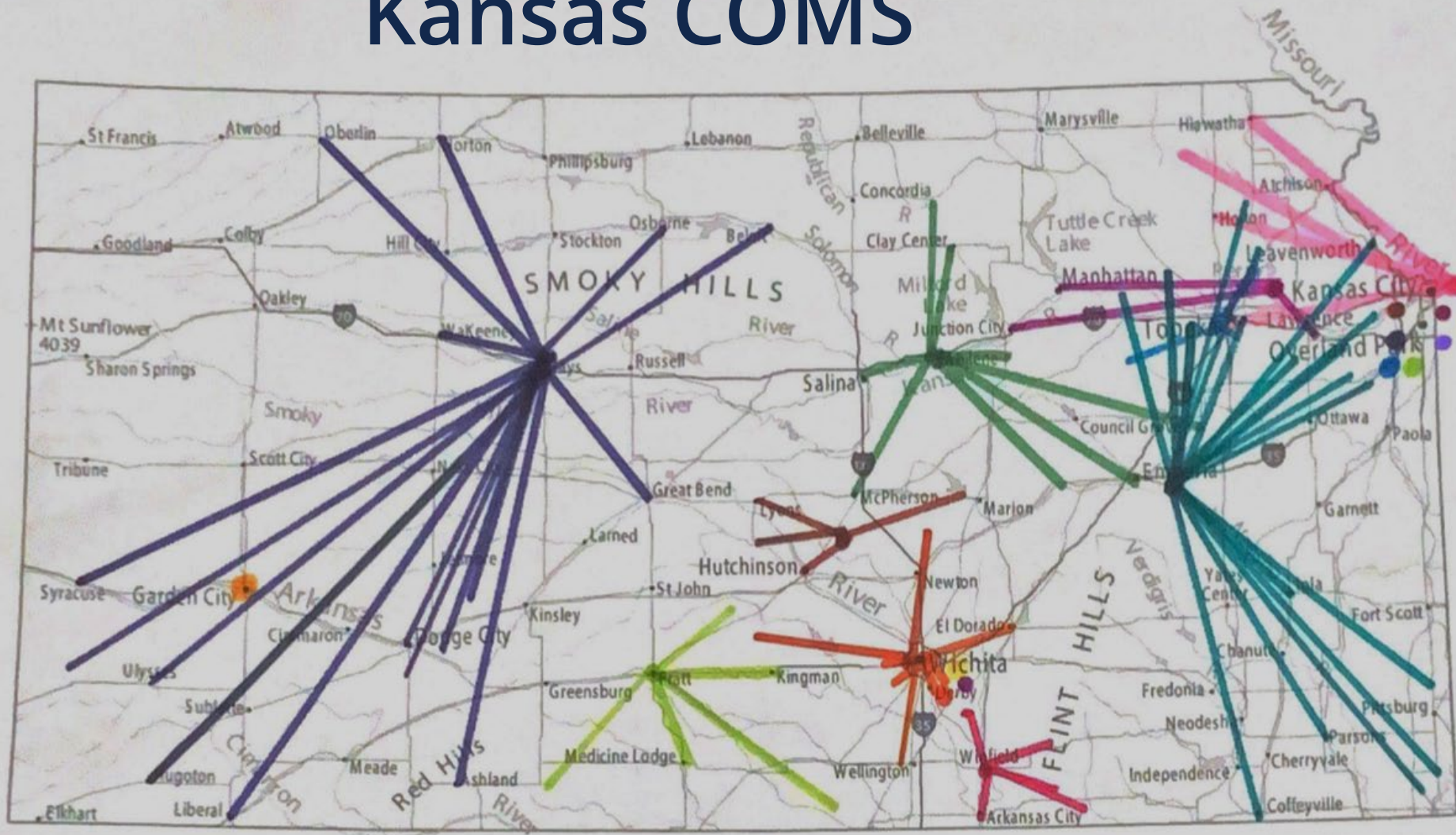
Toni Harrell

913-305-3071

[tharrell@kssdb.org](mailto:tharrell@kssdb.org)



# Kansas COMS



Kansas City Metro - 8 COMS  
Wichita - 5 COMS



# Kansas Teachers of Students Who Are Blind or Visually Impaired (TSVI) and Certified Orientation and Mobility Specialists (COMS)

For more information on Kansas TSVI/COMS

Visit: <https://www.ksdetasn.org/tsvi>

## Contact

Kylie Kilmer

913-645-5607

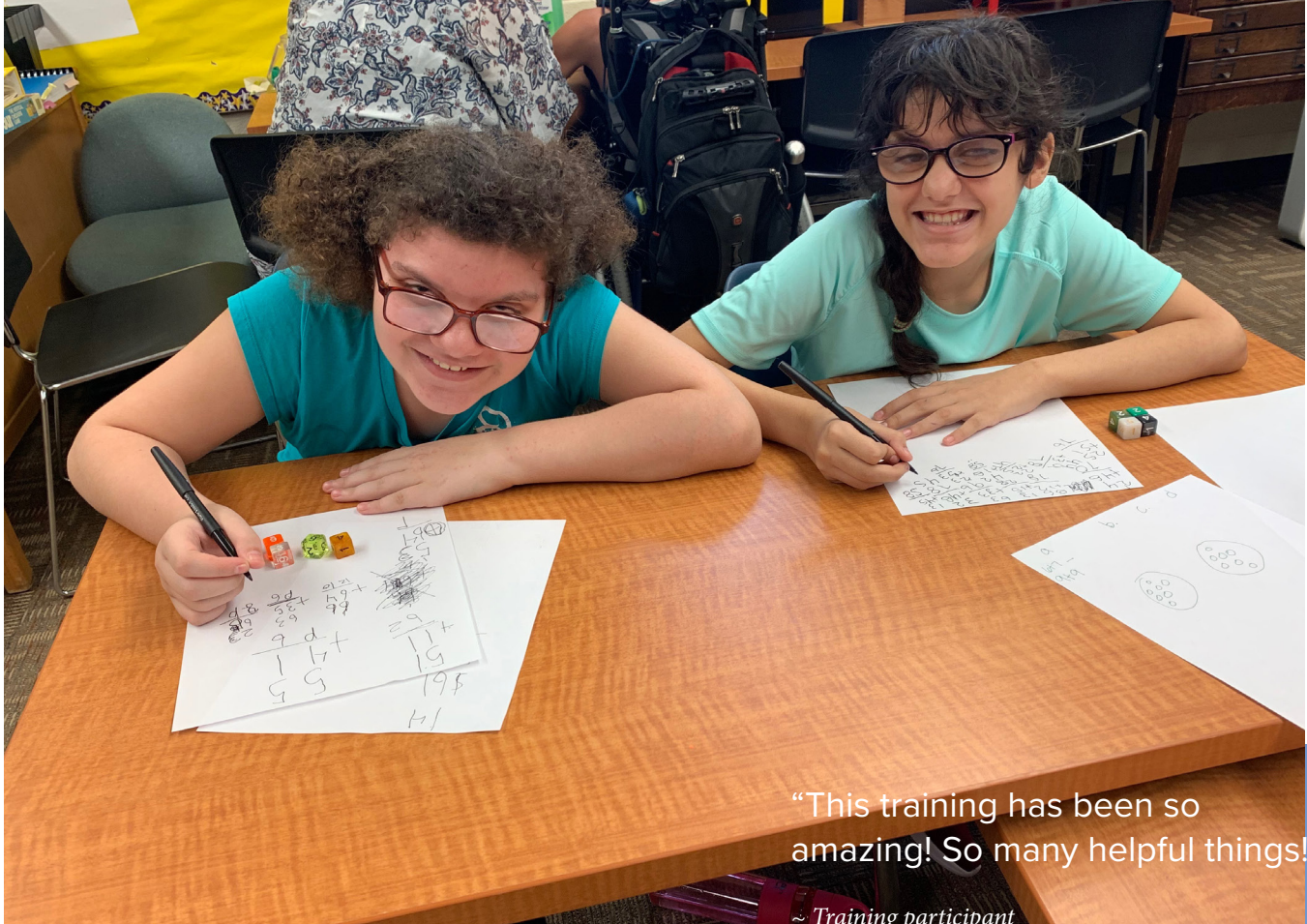
[kkilmer@kssdb.org](mailto:kkilmer@kssdb.org)





# TSVI and COMS Training

## KANSAS STATE SCHOOL FOR THE BLIND



“This training has been so amazing! So many helpful things!”

~ Training participant

*The Kansas State School for the Blind (KSSB) Field Services Department collaborates with both the Kansas State Department of Education and the Technical Assistance System Network (TASN) to recruit and train Teachers of Students Who Are Blind or Visually Impaired (TSVI) and Certified Orientation and Mobility Specialists (COMS).*

### **WHAT IS A TEACHER OF STUDENTS WHO ARE BLIND OR VISUALLY IMPAIRED (TSVI)**

A TSVI is a licensed special education teacher who has received certification and specialized training in meeting the educational needs of students who are blind or have a visual impairment ages birth through 21.

The role of the TSVI is to provide direct and/or consultative special education services specific to vision loss. The TSVI provides support to students, teachers, and parents and also acts as a liaison with community services. The TSVI works with the educational team to ensure that a student with a visual impairment has access to all learning materials and activities in his or her most efficient mode and may provide instruction in assistive technology, braille, independent living skills, and more.

### **QUESTIONS?**

**Kylie Kilmer**  
TSVI/COMS  
Project Coordinator  
kkilmer@kssdb.org  
(913) 645-5607

You can also set up a **Zoom conference call** with KSSB Coordinator(s) for introductions and questions regarding life as a TSVI or COMS and recruitment and retention funding information.

## WHAT IS A CERTIFIED ORIENTATION AND MOBILITY SPECIALIST (COMS)

An Orientation and Mobility (O&M) Specialist teaches individuals with visual impairments to travel safely, confidently, and independently in their environment. The O&M specialist works with infants, children, and adults usually on a one-to-one basis in a home, school, hospital, or in the community.

On a typical day, an orientation and mobility specialist might orient a student who is blind to locate classes, the cafeteria, and the library. The O&M specialist may instruct a young adult who has low vision in the use of a GPS device or teach a student to cross two busy streets to get to their favorite restaurant. On another day, the O&M specialist may motivate an infant who is totally blind to engage in purposeful movement towards a musical toy or collaborate with city planners and traffic engineers to develop safe intersection designs for pedestrians who have a visual impairment.

## WHAT ARE THE MINIMUM QUALIFICATIONS TO APPLY?

TSVI - Bachelor's Degree in the field of education

COMS - Bachelor's Degree in the field of education or a related field

## APPLICATION PROCESS

- Obtain intent to hire from your special education director.
- Apply to the university program of your choice.
  - Missouri State University (TSVI)
  - Stephen F. Austin State University (COMS)
  - University of Nebraska-Lincoln (TSVI/COMS)
- Apply for the recruitment and retention funding

### (FREE TUITION)

The KSSB recruitment and retention funding offers free tuition and fees. Books and some travel are also partially covered, when possible, while participants are attending the out-of-state, graduate-level teacher preparation programs. The student is responsible for paying initial tuition costs up front. The KSSB recruitment and retention funding will then reimburse for tuition when classes are passed with the required GPA.

Application can found here:

<https://www.ksdetasn.org/tsvi>

## HOW ARE APPLICANTS CHOSEN?

Priority is given to applicants who are currently in or willing to relocate to serve in high needs areas.

"I am very excited to start implementing what I have learned."

~ Training participant

## PROGRAM CONTACTS

Missouri State University  
TSVI Program Contacts

Lisa Monkres

[lmonkres@missouristate.edu](mailto:lmonkres@missouristate.edu)

Dr. Shari Scott

[sscott@missouristate.edu](mailto:sscott@missouristate.edu)

Stephen F. Austin State University  
COMS Program Contact

DJ Dean

*Clinical Instructor/O&M Internship Coordinator,  
Visual Impairment Preparation Program*

[djdean@sfasu.edu](mailto:djdean@sfasu.edu)

(936) 468-1142

University of Nebraska – Lincoln  
TSVI/COMS Program Contact

Dr. Mackenzie Savaiano

*Coordinator, Visual Impairments*

[msavaiano2@unl.edu](mailto:msavaiano2@unl.edu)

(402) 472-3801



**KANSAS STATE SCHOOL FOR THE BLIND**

[WWW.KSSB.NET](http://WWW.KSSB.NET)

1100 STATE AVENUE, KANSAS CITY KS 66102 · (913) 305-3000 · TOLL FREE: (800) 572-5463



Autism and Tertiary Behavior Supports  
[www.ksdetasn.org](http://www.ksdetasn.org)



# Leadership

Anyone can hold the helm when the  
sea is calm. —Publilius Syrus

# TASN Autism and Tertiary Behavior Supports



- On-site technical assistance
- On-line lending library
- Asynchronous online modules
  - RBT
  - Structured Teaching
  - FBA-BIP
  - Archived Webinars
- Live webinars
- 23 trainings offered aligned with the National Professional Development Center's Evidence Based Practices in ASD- designed to build capacity at the district and individual educator level.
  - Training always includes the offer of follow-up coaching. (Coaching can be virtual or onsite)
  - InSTEP
  - Agency Commitment



# Licensure Reminders

- KSDE license lookup. The status date is the last time the file had activity.  
*“In process” applications make sure the date changes!* After 90 days of inactivity, applications may be deleted.  
Teacher licensure consultants:  
<https://www.ksde.org/Default.aspx?tabid=820>
- KSDE licensed staff can renew up to 6 months prior to expiration. So most KSDE licensed staff who expire before the end of the school year should be able to have a renewal in to KSDE now.
- Most Non-KSDE licensed staff who are licensed in Kansas can renew 45 days prior to expiration.



# Reimbursement Deadlines

- March 1<sup>st</sup> – Third payment deadline to update data.  
Pays on **ELIGIBLE** FTE
- April 1<sup>st</sup> – Fourth payment deadline to update data.  
Pays on **ELIGIBLE** FTE
- May 1<sup>st</sup> – Final payment deadline to update data.  
Pays on **ELIGIBLE** FTE
- June 1<sup>st</sup> – Final day to update para inservice.

Deadlines are in Appendix A of the Reimbursement Guide, in the KIAS calendar, and separately here:

<https://www.ksde.org/Portals/0/SES/funding/CatAid/CatAid-Deadlines.pdf>

---

# Don't Hesitate to Ask for Help!



**Error:** No Eligible FTE due to missing qualifications-NO FUNDING

**Discrepancy:** Partial Eligible FTE due to qualification dates-PARTIAL FUNDING

[Errors, Discrepancies, and Substitutes \(ksde.org\)](http://ksde.org)

When there are things you don't understand about why someone is an error (after reading the actual error and checking licensure), or why someone is a discrepancy (after checking their licensure), CONTACT ME! I am available by email (preferred), and phone (might be busy or I might be offsite).

Don't think of questions as "bothering" me, think of it as "justifying my employment"!

# Contact Information



Authenticated Applications  
Problems logging in or  
creating account:

[helpdesk@ksde.org](mailto:helpdesk@ksde.org)  
(785) 296-7935

CAPS questions/issues:  
[caps@ksde.org](mailto:caps@ksde.org)



Categorical Aid page

<https://www.ksde.org/Default.aspx?tabid=538>

Catastrophic/Non-Public Equivalency

Mason Vosburgh

[mvosburgh@ksde.org](mailto:mvosburgh@ksde.org)  
(785) 296-4945

Transportation/Medicaid Replacement

Sara Barnes [sbarnes@ksde.org](mailto:sbarnes@ksde.org)

(785) 296-4972

Special Teacher Reimbursement

Evelyn Alden [ealden@ksde.org](mailto:ealden@ksde.org)

(785) 296-3868

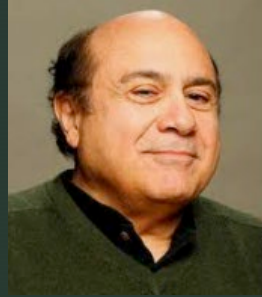
The Kansas State Department of Education does not discriminate on the basis of race, color, national origin, sex, disability or age in its programs and activities and provides equal access to the Boy Scouts and other designated youth groups. The following person has been designated to handle inquiries regarding the nondiscrimination policies: KSDE General Counsel, Office of General Counsel, KSDE, Landon State Office Building, 900 S.W. Jackson, Suite 102, Topeka, KS 66612, (785) 296-3201.



▶ Kansas Association  
of Special Education  
Administrators

# KASEA Officers

President: **Doug Anderson**,  
danderson@keystonelearning.org



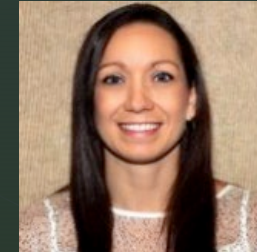
President Elect: **Lena Kisner**,  
lkisner@rcec610.com



Secretary: **Cris Seidel**,  
cris.seidel@usd495.com



Treasurer: **Angie Karraker**,  
aestell@usd261.com



Executive Director: **Ann Matthews**,  
amatthews@keystonelearning.org





# Executive Council Activities

- KASEA Winter Conference: ***Friends, Fellowship, and Foundations***  
GO HERE TO REGISTER: <https://usakansas.wildapricot.org/event-4608413>
- 121 registered, 40 virtual: *you can convert to virtual if needed*
- KASEA has 196 current members: *If you are not current please renew!* GO HERE: <https://usakansas.wildapricot.org/membership>

# Winter Conference Agenda:

## FEBRUARY 22-23, 2022

### HYBRID—VIRTUAL AND IN PERSON OPTIONS

BISHOP PROFESSIONAL DEVELOPMENT CENTER IN TOPEKA, KS

#### Schedule of Events

#### Tuesday, February 22, 2022

7:30 AM	Registration (Light Breakfast/Snacks)
8:30 AM	Introductions and Welcome by Bert Moore
9:00 AM	Keynote - Dr. Monte Selby
11:00 AM	Break
11:15 AM	<b>Break Out Sessions</b> A. Large Group (only option for virtual): Dr. Monte Selby - Reducing Work Stress B. Special Education Staff Recruitment and Retention (Dr. Bret Church) C. Efficient Use of Special Education Staff (Kevin Raley, Jaime Callaghan)
12:15 PM	Lunch (Provided)
1:00 PM	Dr. Randy Watson: State of the Union and Special Education
1:30 PM	<b>Special Education Success: By the Numbers Forum</b> <ul style="list-style-type: none"> <li>• Root Cause Analysis - Collecting data for LOD/DCAP (Tom Munk)</li> <li>• Educational Benefit Review (Doug Tressler, Elena Lincoln, Ann Matthews)</li> <li>• Data usage for program improvement (Rebekah Helget)</li> </ul>
2:30 PM	Break/Vendors
2:45 PM	Special Education Success: By the Numbers - Sharing ideas with colleagues –Small groups

#### Wednesday, February 23, 2022

7:30 AM	Registration (Light Breakfast/Snacks)
8:00 AM	Introductions and Welcome
8:10 AM	Keynote - Tom Munk ✓
9:45 AM	Data Analysis - Chris Perry ✓
10:35 AM	Break
10:45 AM	Legal – Mark Ward
12:15 PM	Lunch (Provided)
1:15 - 2:30 PM	<b>Afternoon Activity: Legislative Advocacy Opportunity - Patty Carter</b> To commemorate Public Education Week, the KASEA Legislative Team extends an opportunity to gather at the Capitol after the KASEA Winter Conference. Details will be shared through email.

#### Thanks to our Sponsors



# KASEAS' Priorities for 2022

- Conquer the MOE monster! Collaborate with KSDE and TAT to support new directors and to better inform Boards and Superintendents about special education funding and budgeting.
- Recruitment/retention of special education personnel. Decreased applicant pools for certified and classified positions while the percent of identified students continues to increase.
- Further enhance our collaboration with partner organizations (i.e. USA, KASB, KSDE, TASN/MTSS/ATBS, KAESA) to provide a more consistent and unified support of teachers and administrators in Kansas.
- Analyze the current needs of KASEA members and be more responsive.

***Survey to come!***

# Thank You!



Remember:

- Watch out for each other!
- It is already February!
- The Winter Conference starts *2/22/22*
- Spring break around the corner...

# 2022 WINTER CONFERENCE

FELLOWSHIP, FRIENDS, AND FOUNDATIONS



REGISTER AT: [bit.do/kasea2021](https://bit.do/kasea2021)

## FEBRUARY 22-23, 2022

### HYBRID—VIRTUAL AND IN PERSON OPTIONS

BISHOP PROFESSIONAL DEVELOPMENT CENTER IN TOPEKA, KS

#### Schedule of Events

#### Tuesday, February 22, 2022

7:30 AM	Registration (Light Breakfast/Snacks)
8:30 AM	Introductions and Welcome by Bert Moore
9:00 AM	Keynote - Dr. Monte Selby
11:00 AM	Break
11:15 AM	<b>Break Out Sessions</b> A. Large Group (only option for virtual): Dr. Monte Selby - Reducing Work Stress B. Special Education Staff Recruitment and Retention (Dr. Bret Church) C. Efficient Use of Special Education Staff (Jaime Callaghan)
12:15 PM	Lunch (Provided)
1:00 PM	Dr. Randy Watson: State of the Union and Special Education
1:30 PM	<b>Special Education Success: By the Numbers Forum</b> *Educational Benefit Review (Doug Tressler, Elena Lincoln, Ann Matthews) *Data usage for program improvement (Rebekah Helget)
2:30 PM	Break/Vendors
2:45 PM	Special Education Success: By the Numbers - Sharing ideas with colleagues –Small groups

#### Wednesday, February 23, 2022

7:30 AM	Registration (Light Breakfast/Snacks)
8:00 AM	Introductions and Welcome
8:10 AM	Root Cause Analysis– Collection Data for LOD/DCAP—Tom Munk
9:45 AM	Using Data—Chris Perry
10:30 AM	Break
10:45 AM	Legal – Mark Ward
12:15 PM	Lunch (Provided)
1:15 - 2:30 PM	<b>Optional Afternoon Activity</b> <b>Legislative Advocacy Opportunity - Patty Carter</b> To commemorate Public Education Week, the KASEA Legislative Team extends an opportunity to gather at the Capitol after the KASEA Winter Conference. Details will be shared through email.

#### Thanks to our Sponsors



February 22—4:00—6:00 PM—Evening Social at Johnny's Tavern Sponsored

## HOTEL ROOMS ARE AVAILABLE FOR \$99 PER NIGHT AT:

SPRINGHILL SUITES 2745 SW FAIRLAWN RD., TOPEKA, KS (785) 596-9650

MENTION KASEA TO GET THE SPECIAL RATE