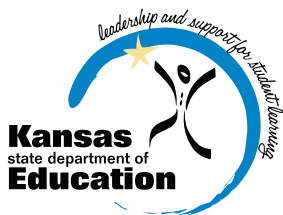




2018-2019 NATIONAL SCHOOL BUS LOADING AND UNLOADING SURVEY



Kansas leads the world in the success of each student.

OCT. 2019

The Kansas State Department of Education School Bus Safety Unit wishes to thank the National Association of State Directors of Pupil Transportation Services for its assistance with this report.



The National School Bus Loading and Unloading Survey is a collection of fatality accident reports provided by state agencies that are responsible for school transportation and/or accident records.* The Kansas State Department of Education (KSDE), along with the help of the National Association of State Directors of Pupil Transportation Services, asks that all states and Washington, D.C., provide data to the agency, and then KSDE compiles it for this survey. Only fatalities involving school children in or around the loading or unloading areas of a school bus are included.

This survey is provided annually to the school transportation industry in an effort to raise awareness of the dangers involved in loading and unloading school children. Fatalities — which are caused by a variety of circumstances and errors by passing motorists and school bus drivers — continue to take place. This shows the continuing need for forceful, advanced instruction to school bus drivers and students, as well as the need to increase our efforts to thoroughly inform drivers across the country about the requirements of the school bus stop law.

The 2018-2019 National School Bus Loading and Unloading Survey is only available online. Please reproduce and utilize the survey data as desired.

** Numbers are only as accurate as the reporting agency that provides them.*

For more information, contact:

Keith Dreiling
Director
School Bus Safety Unit
(785) 296-4567
kdreiling@ksde.org



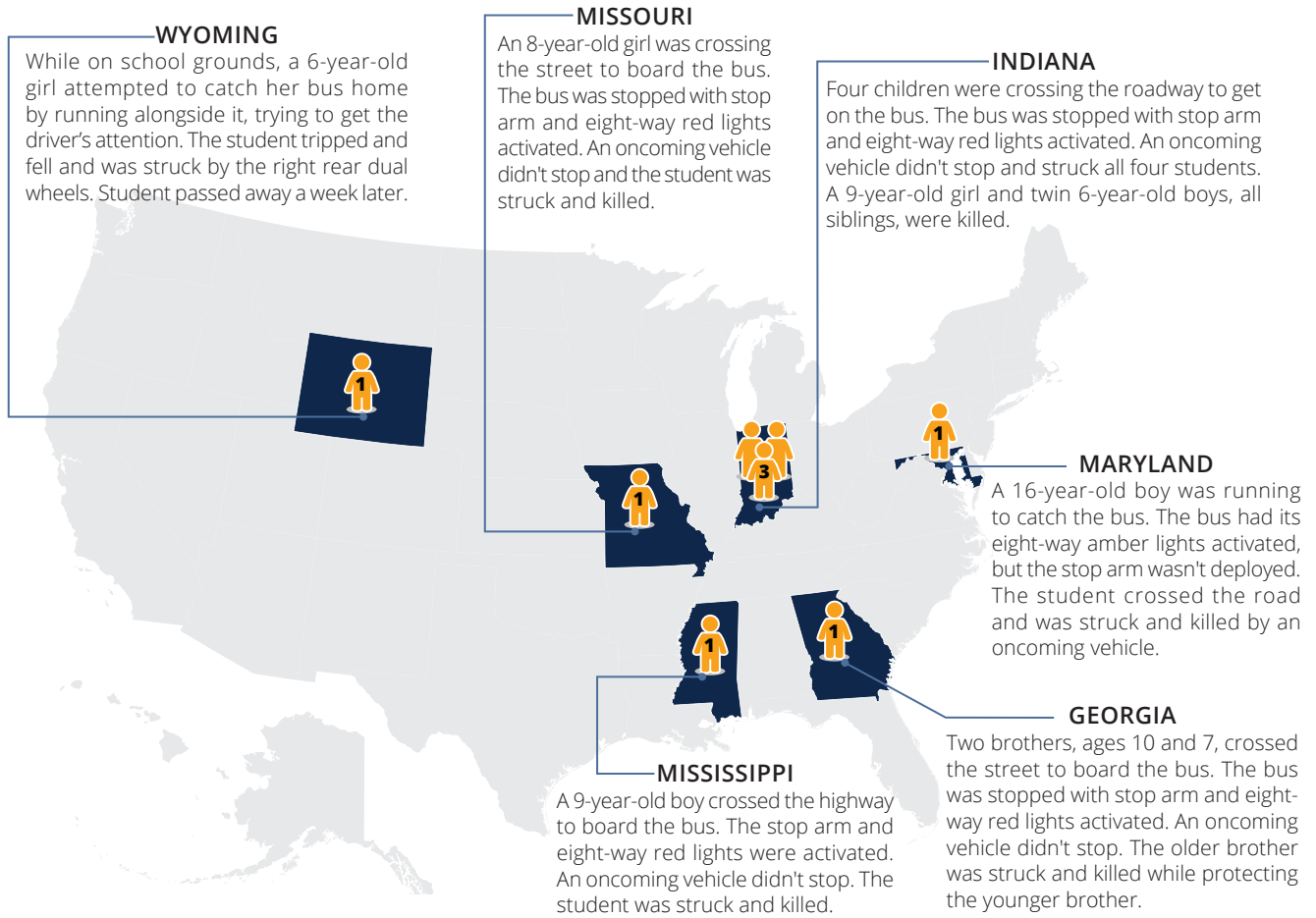
Kansas State Department of Education
900 S.W. Jackson Street, Suite 102
Topeka, Kansas 66612-1212
(785) 296-3201
www.ksde.org

2018-2019 NATIONAL SCHOOL BUS
LOADING AND UNLOADING SURVEY

Contents

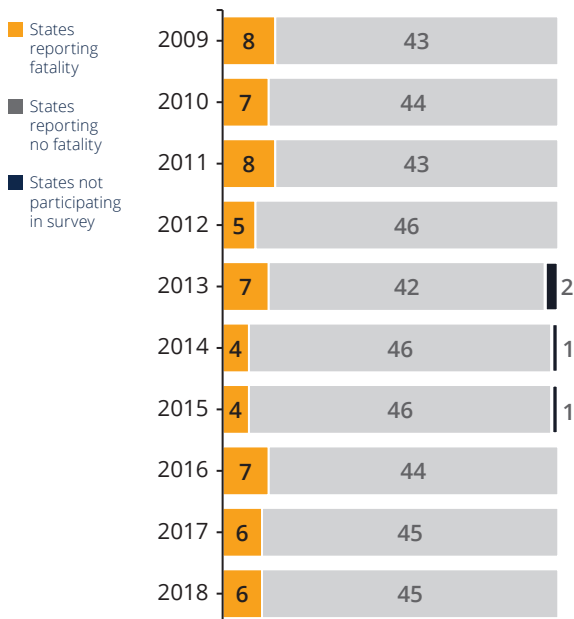
REPORTS OF FATALITIES BY STATE.....	1
Number of States Reporting Fatalities.....	1
10-Year Survey of Total Fatalities.....	1
Vehicle.....	2
School Buses vs. Other Vehicles.....	2
School Bus Type.....	2
Position of Child When Killed by School Bus.....	2
School Children Killed by Vehicle Passing School Bus.....	2
Objects Caught or Dropped.....	2
Destination.....	3
Location of Fatality.....	3
Age.....	4
Gender.....	4
Day of the Week Fatality Occurred.....	5
Month Fatality Occurred.....	5
Lighting Conditions.....	6
Weather Conditions.....	6
Weather-Related Road Conditions.....	6
Area Where Fatality Occurred.....	7
Road Type.....	7
49-YEAR SUMMARY.....	8
Age.....	8
School Buses vs. Other Vehicles.....	9
Destination.....	9

REPORTS OF FATALITIES BY STATE



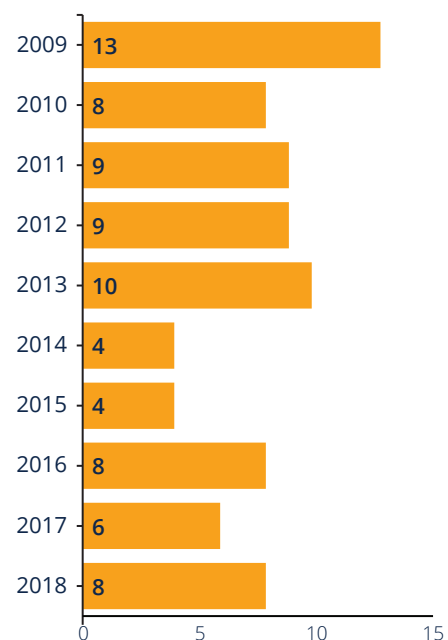
Number of States Reporting Fatalities

50 States and Washington D.C.



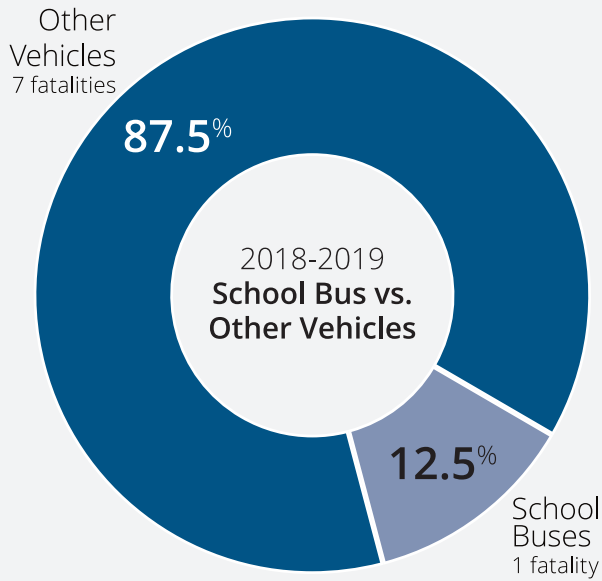
10-Year Survey of Total Fatalities

50 States and Washington D.C.



Vehicle

School Buses vs. Other Vehicles

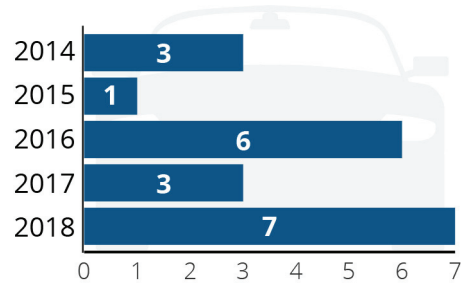


87.5 percent of fatalities were attributed to other vehicles during the 2018-2019 school year. 12.5 percent were attributed to school buses during the same time period.

School Bus Type

Year	Type A	Type C	Type D	Total
2014	1			1
2015		3		3
2016		2		2
2017		2	1	3
2018		1		1

School Children Killed by Vehicle Passing School Bus



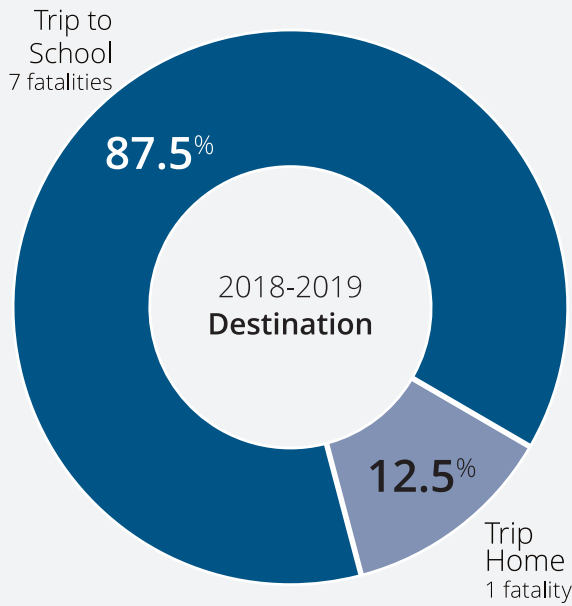
Position of Child When Killed by School Bus

Year	Back	Front	Total
2014	1		1
2015	1	2	3
2016	1	1	2
2017	2	1	3
2018	1		1

Objects Caught or Dropped

Year	Closed Door	Dropped Object	Total
2014			0
2015		2	2
2016	1		1
2017			0
2018			0

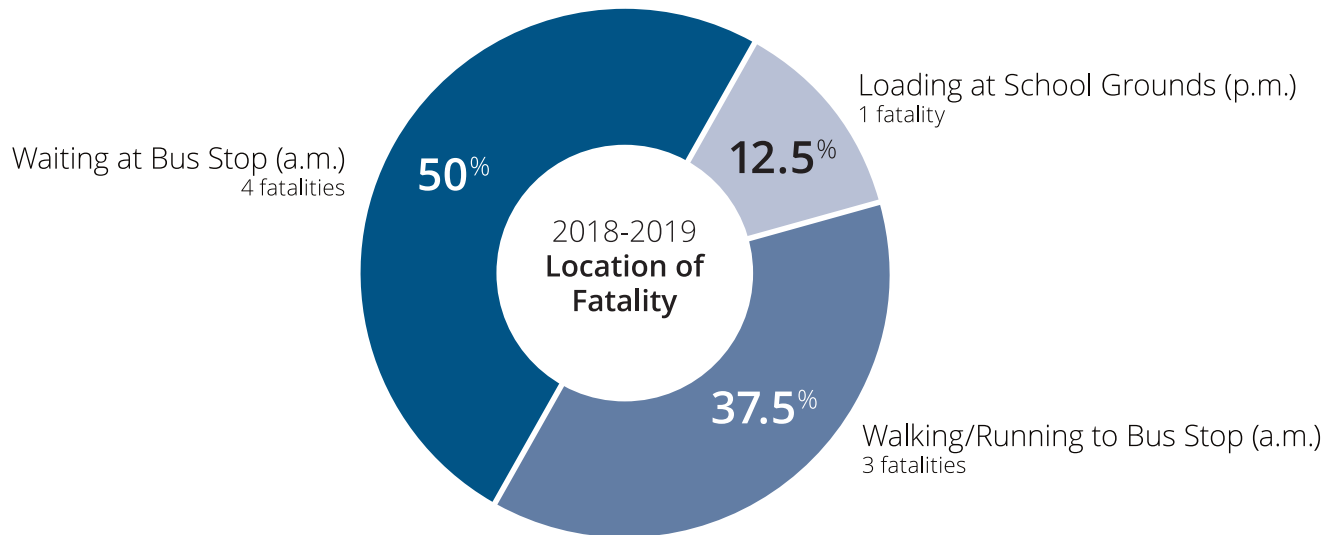
Destination



In 2018-2019 students traveling to school attributed to 87.5 percent of fatalities.

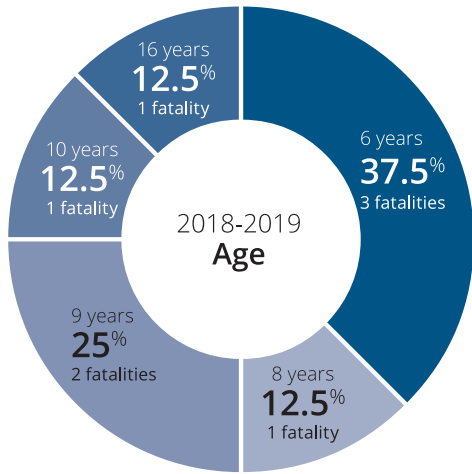
Year	Trip to School	Trip Home	Total
2014	1	3	4
2015	2	2	4
2016	4	4	8
2017	3	3	6
2018	7	1	8

Location of Fatality



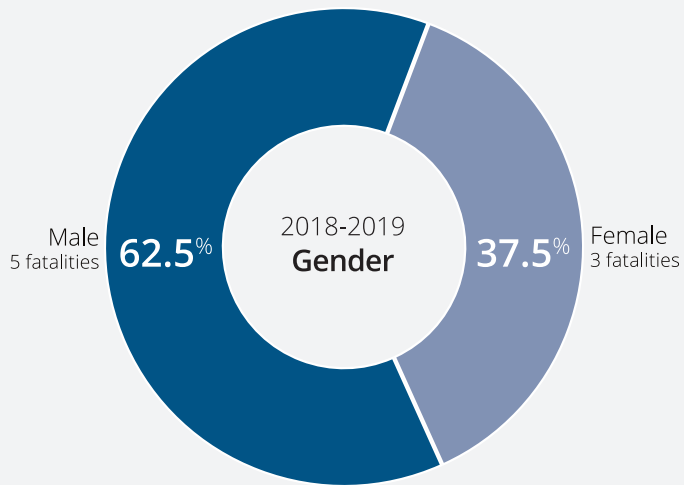
	SCHOOL BUS STOP				SCHOOL GROUNDS	Total
	Walking/Running to (a.m.)	Waiting (a.m.)	Unloading (p.m.)	Walking/Running from (p.m.)	Loading (p.m.)	
2014		1	2	1		4
2015		2	2			4
2016	4		2	2		8
2017	3		2	1		6
2018	3	4			1	8

Age



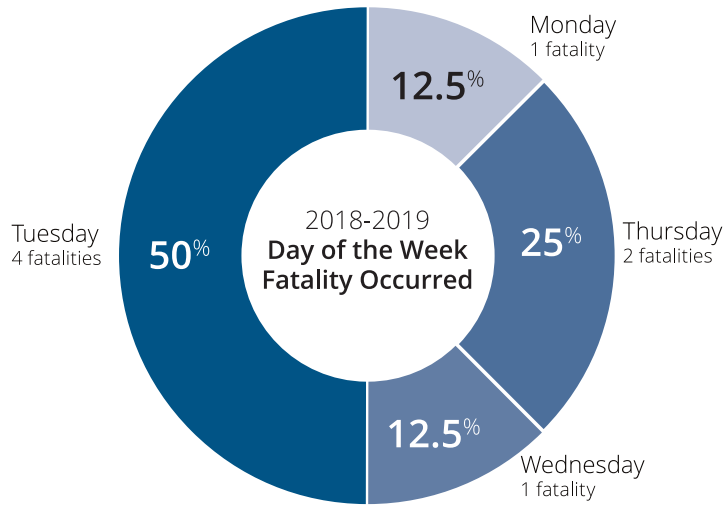
AGE	YEAR				
	2014	2015	2016	2017	2018
1					
2		1			
3					
4					
5		2			
6			2	1	3
7	1		3		
8				2	1
9			1		2
10	1			1	1
11			1		
12	1				
13					
14					
15				2	
16	1	1	1		1
17					
Total	4	4	8	6	8

Gender



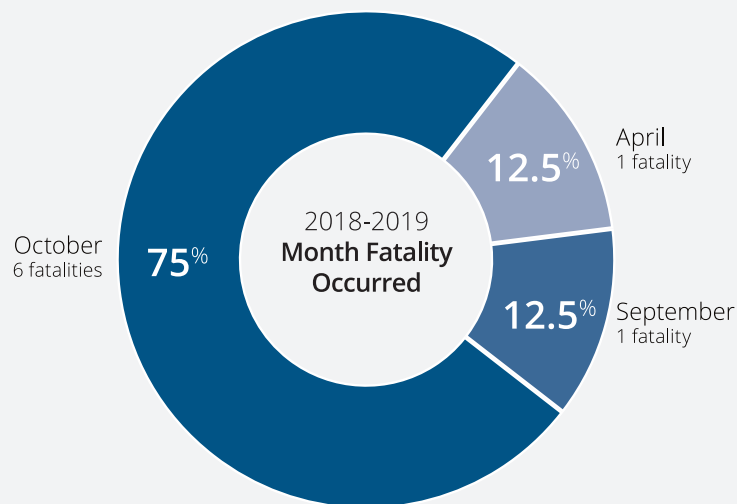
Year	Male	Female	Total
2014	2	2	4
2015	4	2	4
2016	4	4	8
2017	2	4	6
2018	5	3	8

Day of the Week Fatality Occurred



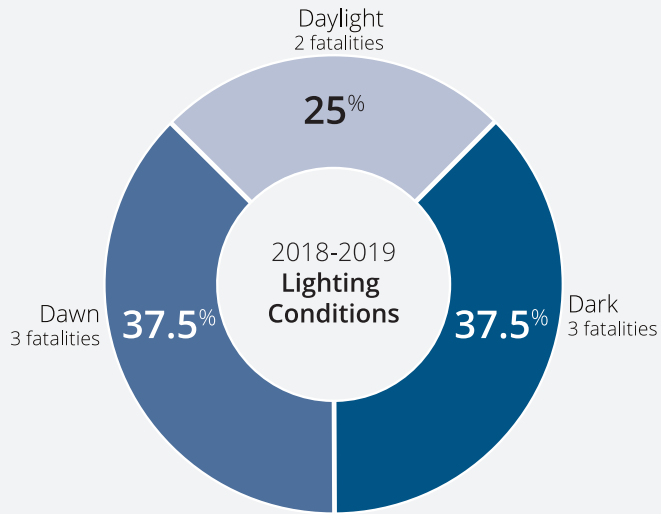
Year	Monday	Tuesday	Wednesday	Thursday	Friday	Total
2014	2			2		4
2015	2		1		1	4
2016	1	1		4	2	8
2017	1	2			3	6
2018	1	4	1	2		8

Month Fatality Occurred



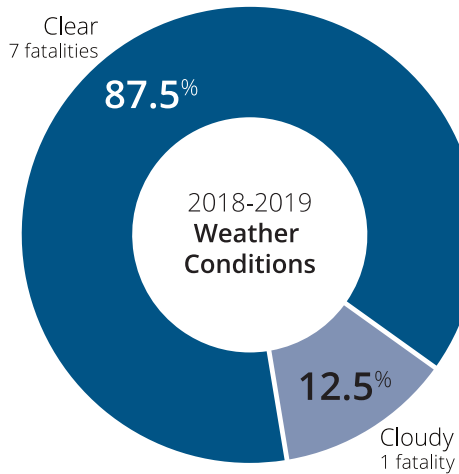
MONTH	YEAR				
	2014	2015	2016	2017	2018
Jan.					
Feb.			1	1	
Mar.	2		3	1	
Apr.		1		2	1
May					
Jun.		1			
Jul.					
Aug.					
Sept.		1			1
Oct.	1	1	3	1	6
Nov.			1	1	
Dec.	1				
Total	4	4	8	6	8

Lighting Conditions



Year	Dawn	Daylight	Dark	Total
2014	1	3		4
2015	1	2	1	4
2016		7	1	8
2017		5	1	6
2018	3	2	3	8

Weather Conditions



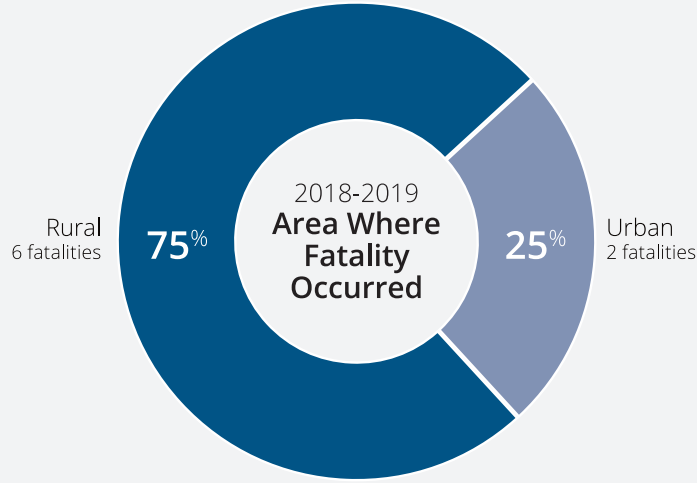
Year	Clear	Cloudy	Fog	Total
2014	4			4
2015	3		1	4
2016	7	1		8
2017	6			6
2018	7	1		8

Weather-Related Road Conditions



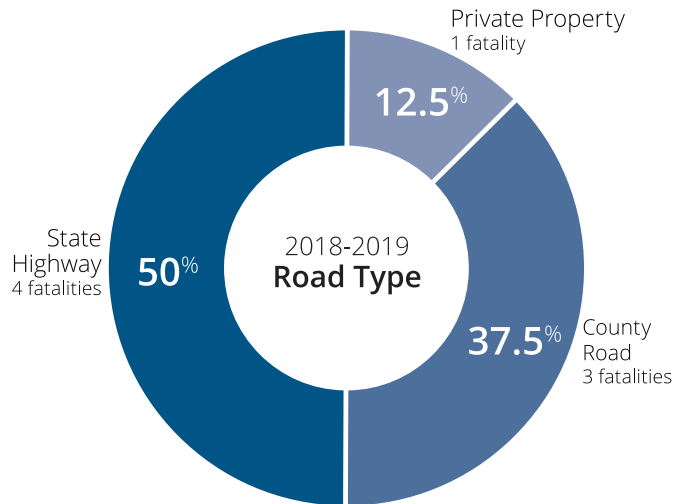
Year	Dry	Wet	Snow/Slush	Total
2014	4			4
2015	3	1		4
2016	7		1	8
2017	6			6
2018	8			8

Area Where Fatality Occurred



Year	Rural	Urban	Total
2014	3	1	4
2015	3	1	4
2016	7	1	8
2017	1	5	6
2018	6	2	8

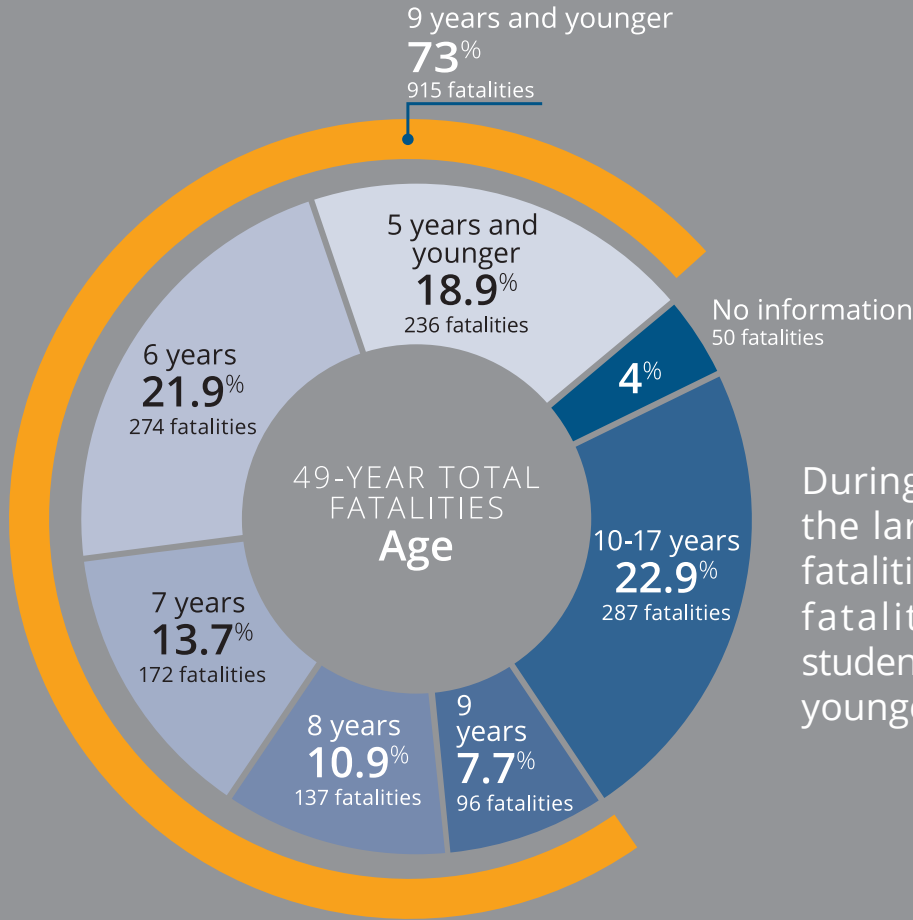
Road Type



Year	City Street	State Highway	Federal Highway	County Road	Private Property	Total
2014	1	3				4
2015	2	1		1		4
2016	2	5	1			8
2017	5			1		6
2018		3		4	1	8

49-YEAR SUMMARY

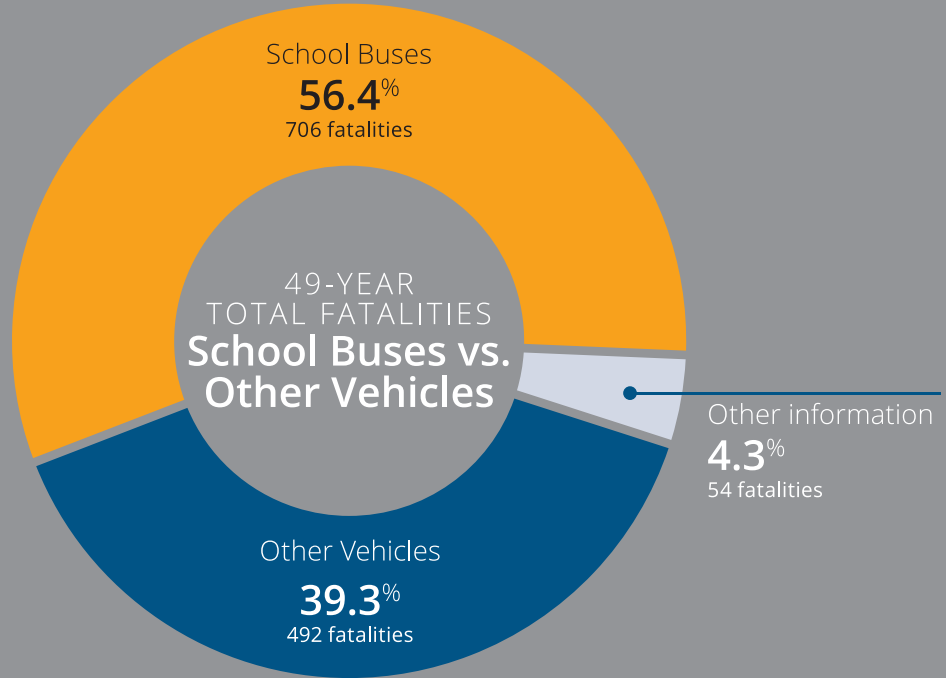
Age



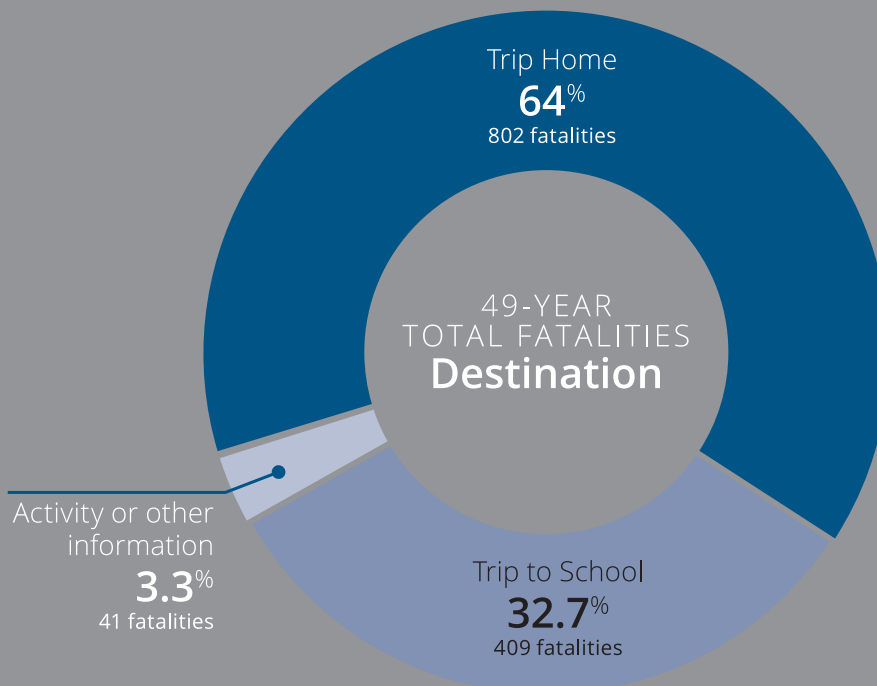
During the past 49 years, the largest percentage of fatalities, 73 percent (915 fatalities), occurred to students 9 years of age and younger.

49-YEAR TOTAL STUDENT FATALITIES: 1,252

School Buses vs. Other Vehicles



Destination



MISSION

To prepare Kansas students for lifelong success through rigorous, quality academic instruction, career training and character development according to each student's gifts and talents.

VISION

Kansas leads the world in the success of each student.

MOTTO

Kansans Can

SUCCESS DEFINED

A successful Kansas high school graduate has the

- Academic preparation,
- Cognitive preparation,
- Technical skills,
- Employability skills and
- Civic engagement

to be successful in postsecondary education, in the attainment of an industry recognized certification or in the workforce, without the need for remediation.

OUTCOMES

- Social-emotional growth measured locally
- Kindergarten readiness
- Individual Plan of Study focused on career interest
- High school graduation
- Postsecondary success

900 S.W. Jackson Street, Suite 600
Topeka, Kansas 66612-1212

(785) 296-3203

www.ksde.org

CHAIRMAN DISTRICT 8

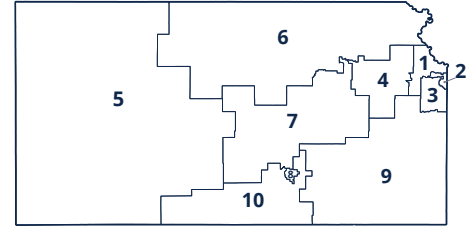


Kathy Busch
kbusch@ksde.org

VICE CHAIR DISTRICT 1



Janet Waugh
jwaugh@ksde.org



BOARD MEMBERS

DISTRICT 2



Steve Roberts
sroberts@ksde.org

DISTRICT 3



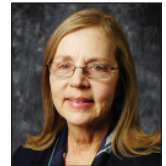
Michelle Dombrosky
mdombrosky@ksde.org

DISTRICT 4



Ann E. Mah
amah@ksde.org

DISTRICT 5



Jean Clifford
jclifford@ksde.org

LEGISLATIVE LIAISON DISTRICT 6



Dr. Deena Horst
dhorst@ksde.org

DISTRICT 7



Ben Jones
bjones@ksde.org

LEGISLATIVE LIAISON DISTRICT 9



Jim Porter
jporter@ksde.org

DISTRICT 10



Jim McNiece
jmcniece@ksde.org



KANSAS STATE DEPARTMENT OF EDUCATION

COMMISSIONER OF EDUCATION



Dr. Randy Watson

DEPUTY COMMISSIONER Division of Fiscal and Administrative Services



Dale M. Dennis

DEPUTY COMMISSIONER Division of Learning Services



Dr. Brad Neuenswander

The Kansas State Board of Education does not discriminate on the basis of race, color, national origin, sex, disability or age in its programs and activities and provides equal access to any group officially affiliated with the Boy Scouts of America and other designated youth groups. The following person has been designated to handle inquiries regarding the nondiscrimination policies: KSDE General Counsel, Office of General Counsel, KSDE, Landon State Office Building, 900 S.W. Jackson, Suite 102, Topeka, KS 66612, (785) 296-3201.

For more information, contact:

School Bus Safety Unit
(785) 296-3551
kdreiling@ksde.org



Kansas State Department of Education
900 S.W. Jackson Street, Suite 102
Topeka, Kansas 66612-1212
(785) 296-3201
www.ksde.org